

ROZET VE KAPAKLAR 4 - 11



DİKME MAFSALLARI 13 - 19



KÖŞE MAFSALLARI VE
PATEN DİRSEKLER 21 - 24



EMNİYET HATTI
BAĞLANTI YÜZÜKLERİ 26 - 28



ZEMİN VE DUVAR
BAĞLANTI ELEMANLARI 30 - 33



KOLÇAKLAR 35 - 40



DİKME BABALARI VE
BAĞLANTI ELEMANLARI 42 - 44



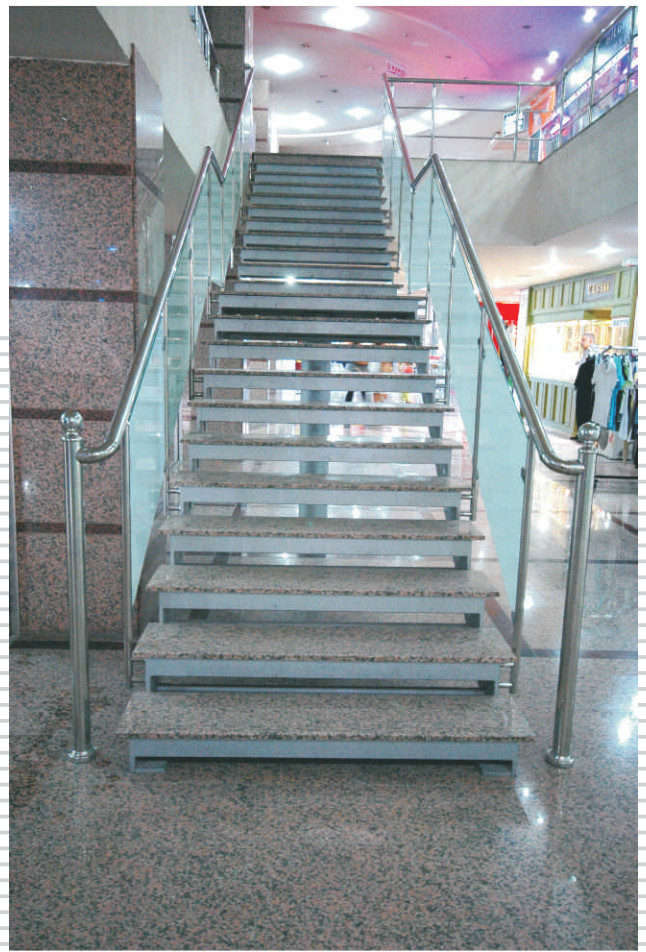
CAM TUTUCULARI VE
BAĞLANTI AKSESUARLARI 46 - 60

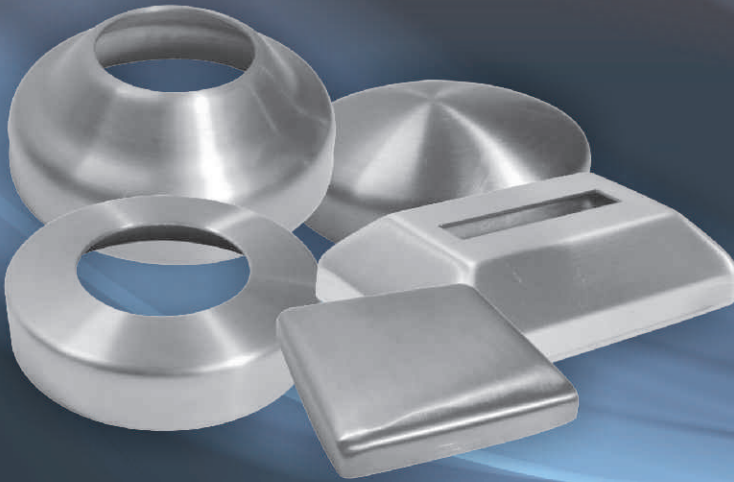
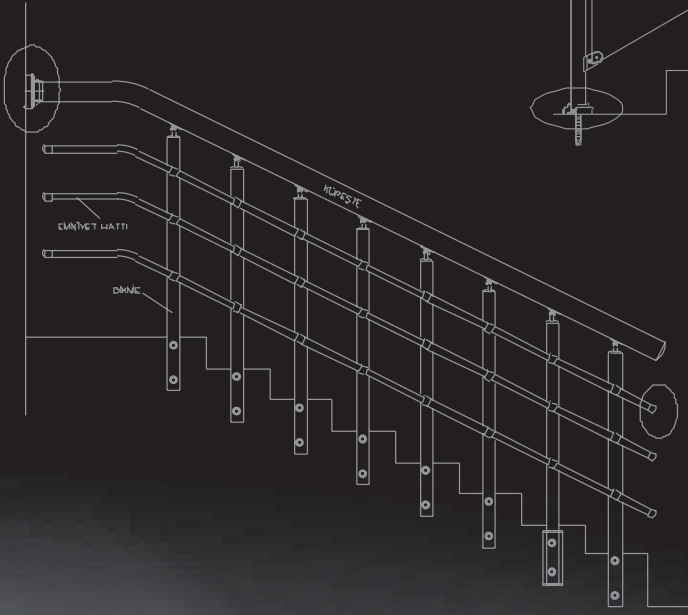
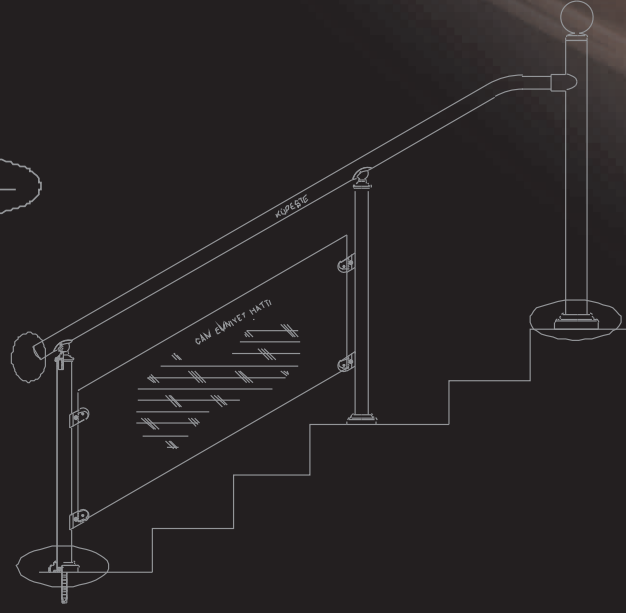
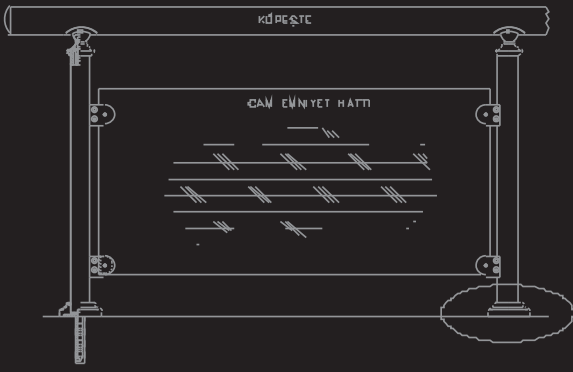


CUBICLE BAĞLANTI SİSTEMLERİ
MENTEŞELER - KAPI STOPERLERİ 62 - 70
HALAT GERDİRME - ENGELLİ TUTAMAKLARI



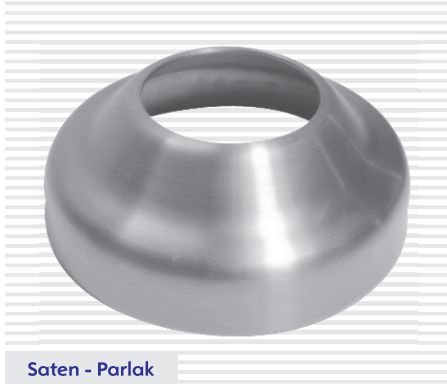
ÖZEL DEKORATİF DİKMELER
BAYRAK DİREĞİ VE AKSESUARLARI 72 - 87
HIRDAVAT GRUBU





ROZET VE KAPAKLAR

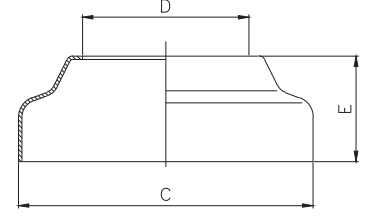
ROZET VE KAPAKLAR



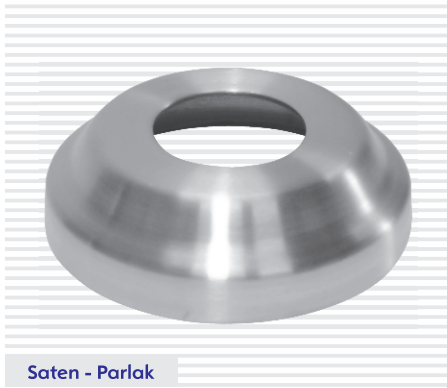
Saten - Parlak

ROZET - PR

Boru Çapları (D)	(C)	(E)
Ø 16-19-21-25	Ø 46	14.5
Ø 16-19-21-25-32	Ø 72	25
Ø 38-40-42	Ø 78	26
Ø 48-51	Ø 85	30.5
Ø 60	Ø 95	30.5
Ø 76	Ø 142.5	37.5



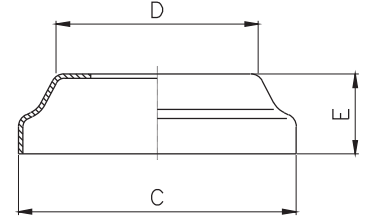
Malzeme = AISI 304



Saten - Parlak

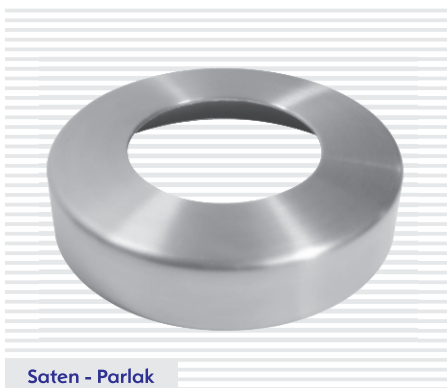
ROZET - BPR

Boru Çapları (D)	(C)	(E)
Ø 16-19-21-25-32-38-42	Ø 62.5	18



Malzeme = AISI 304

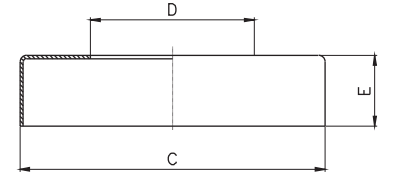
Kalınlık = 1 mm.



Saten - Parlak

ROZET - DPR

Boru Çapları (D)	(C)	(E)
Ø 25-32-38-42	Ø 72	14.5
Ø 51-60	Ø 95	22
Ø 32-38-42-51-60-70	Ø 104	23
Ø 32-38-42-51-60-70-76	Ø 142	24.5



Malzeme = AISI 304

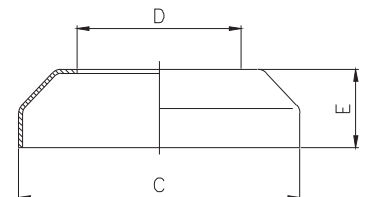
Kalınlık = 1 mm.



Saten - Parlak

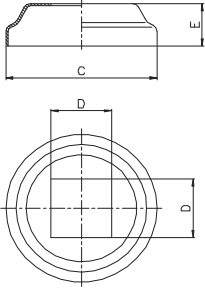
ROZET - YPR

Boru Çapları (D)	(C)	(E)
Ø 25-32-38-42	Ø 72	20
Ø 51-60	Ø 95	26

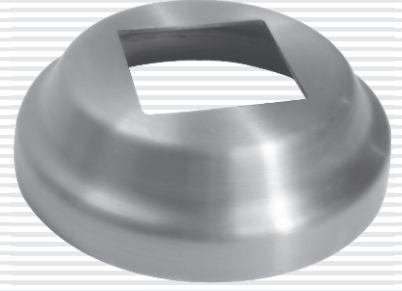


Malzeme = AISI 304

Kalınlık = 1 mm.

ROZET - BPR


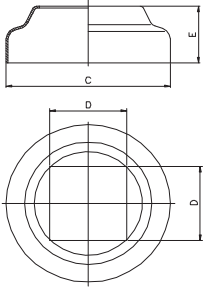
Profil Ölçüleri (D)	(C)	(E)
20x20- 25x25- 30x30	Ø62.5	18



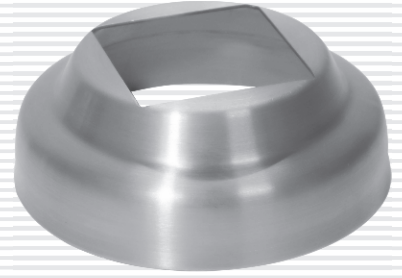
Saten - Parlak

Malzeme = AISI 304

Kalınlık = 1 mm.

ROZET - PR


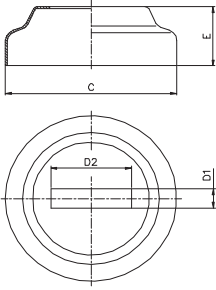
Profil Ölçüleri (D)	(C)	(E)
40x40	Ø85	30.5



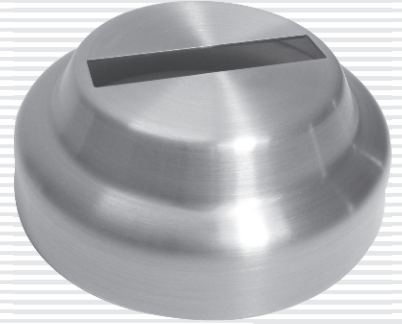
Saten - Parlak

Malzeme = AISI 304

Kalınlık = 1 mm.

ROZET - PR


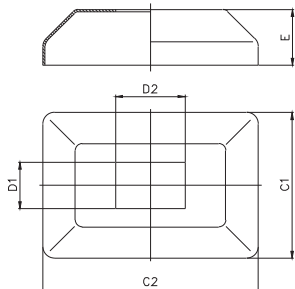
Profil Ölçüleri (D1, D2)	(C)	(E)
5x50- 10x30- 10x40	Ø85	30.5
10x50- 15x50- 20x40	Ø85	30.5



Saten - Parlak

Malzeme = AISI 304

Kalınlık = 1 mm.

ROZET - DKPR


Profil Ölçüleri (D1, D2)	(C1, C2)	(E)
10x30- 10x40- 10x50- 10x60	63x93	24
15x30- 15x40- 15x60		
20x30- 20x40- 20x50- 20x60		
30x40- 30x50- 30x60		



Saten - Parlak

Malzeme = AISI 304

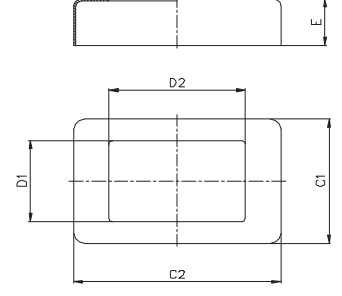
Kalınlık = 1 mm.



Saten - Parlak

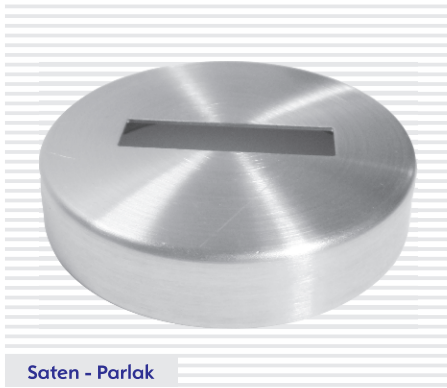
ROZET - DDKPR

Profil Ölçüleri (D1-D2)	(C1-C2)	(E)
10x30- 10x40- 10x50- 10x60	62x92	23
15x30- 15x40- 15x60		
20x30- 20x40- 20x50- 20x60		
30x40- 30x50- 30x60		



Malzeme = AISI 304

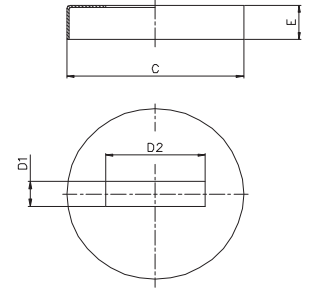
Kalınlık = 1 mm.



Saten - Parlak

ROZET - DPR

Profil Ölçüleri (D1-D2)	(C)	(E)
10x30- 10x40- 10x50	Ø 72	14.5
15x30- 15x40	Ø 95	22
20x20- 30x30- 25x25- 40x40 20x30- 20x40- 20x50- 20x60	Ø 104	23
20x20- 30x30- 25x25- 40x40 30x40- 30x50- 30x60	Ø 142	24.5



Malzeme = AISI 304

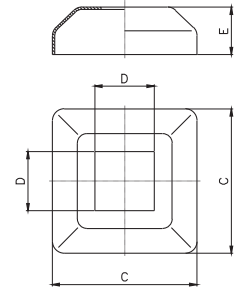
Kalınlık = 1 mm.



Saten - Parlak

ROZET - KPR (61x61)

Profil Ölçüleri (D)	(C)	(E)
20x20- 25x25- 30x30	61x61	20



Malzeme = AISI 304

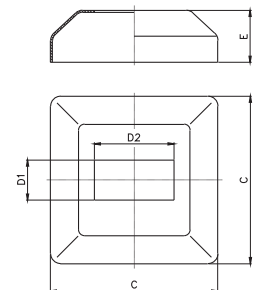
Kalınlık = 1 mm.



Saten - Parlak

ROZET - KPR (84x84)

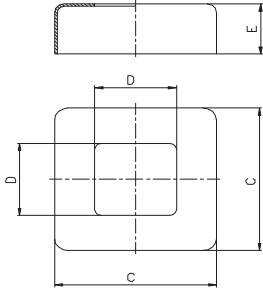
Profil Ölçüleri (D1-D2)	(C)	(E)
10x40- 10x50- 20x30- 20x40	84x84	26
20x50- 30x40- 30x50- 30x60		
40x40- 40x60- 50x50 60x60- 80x80		



Malzeme = AISI 304

Kalınlık = 1 mm.

ROZET - KDPR (60x60)



Profil Ölçüleri (D)	(C)	(E)
20x20- 25x25- 30x30- 40x40	60x60	21

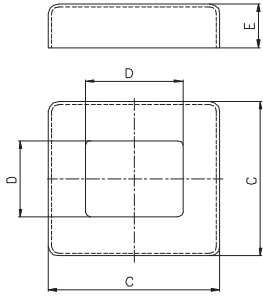


Malzeme = AISI 304

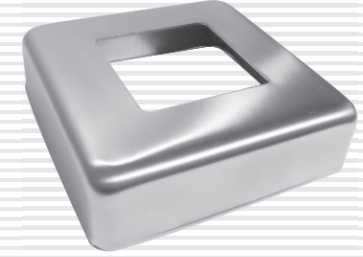
Kalınlık = 1 mm.

Saten - Parlak

ROZET - KDPR (81x81)



Profil Ölçüleri (D1-D2)	(C)	(E)
10x40- 10x50- 20x30- 20x40	81x81	23
20x50- 30x40- 30x50- 30x60		
40x40- 40x60- 50x50- 60x60		

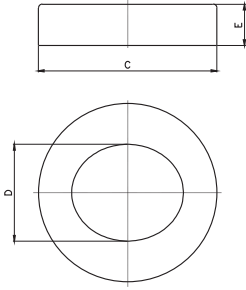


Malzeme = AISI 304

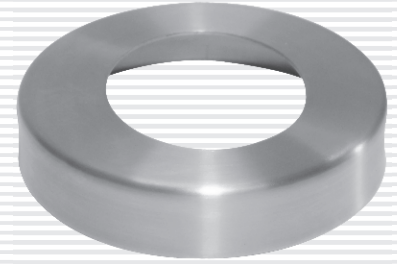
Kalınlık = 1 mm.

Saten - Parlak

AÇILI ROZET - ADPR



Boru Çapları (D)	(C)	(E)
Ø32-38-42	Ø72	14.5
Ø51	Ø95	22

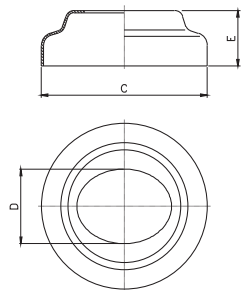


Malzeme = AISI 304

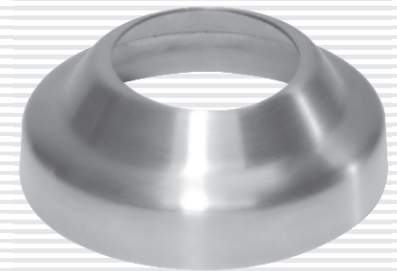
Kalınlık = 1 mm.

Saten - Parlak

AÇILI ROZET - APR



Boru Çapları (D)	(C)	(E)
Ø32-38	Ø78	26
Ø42	Ø85	30.5
Ø51	Ø95	30.5



Malzeme = AISI 304

Kalınlık = 1 mm.

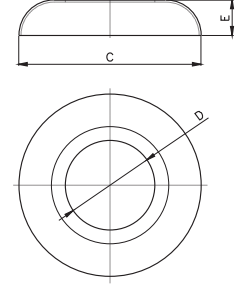
Saten - Parlak



Saten - Parlak

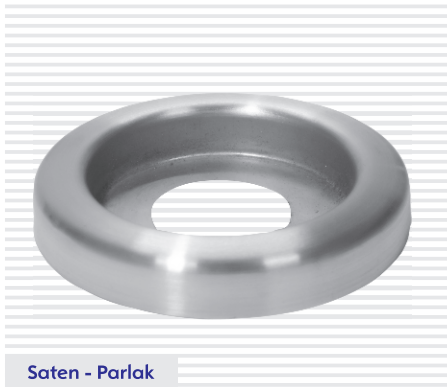
ROZET - HPR

Boru Çapları (D)	(C)	(E)
Ø25-32	Ø61	16
Ø51	Ø85.5	16.5



Malzeme = AISI 304

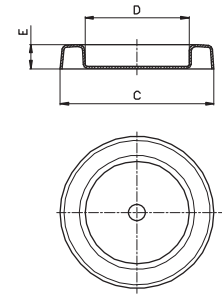
Kalınlık = 1 mm.



Saten - Parlak

DÜZ DUVAR ROZET - DDR

Boru Çapları (D)	(C)	(E)
Ø51	Ø75.5	12



Malzeme = AISI 304

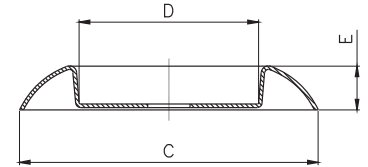
Kalınlık = 1 mm.



Saten - Parlak

DUVAR ROZET - DR

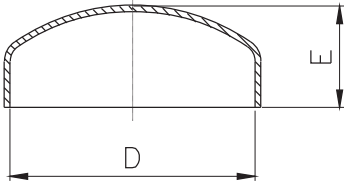
Boru Çapları (D)	(C)	(E)
Ø25	Ø41	8.2
Ø32	Ø51.3	8.2
Ø38	Ø64	9
Ø42	Ø70.6	9
Ø51	Ø85	12.5



Malzeme = AISI 304

Kalınlık = 1 mm.

GEÇME KAPAK - GK



Malzeme = AISI 304

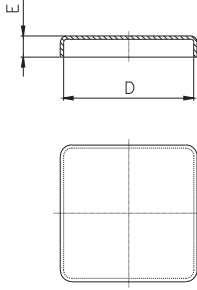
Kalınlık = 1 mm.

Boru Çapları (D)	(E)
Ø16	14.8
Ø19	8.7
Ø21	11.8
Ø25	12
Ø32	15.8
Ø38	14
Ø40	13.2
Ø42	17.5
Ø48	15
Ø51	15.5
Ø60	19
Ø70	18.3
Ø76	20.8



Saten - Parlak

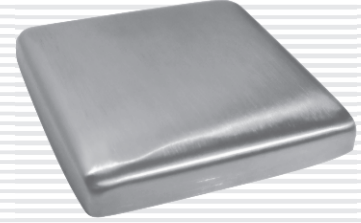
KARE GEÇME KAPAK - GK



Malzeme = AISI 304

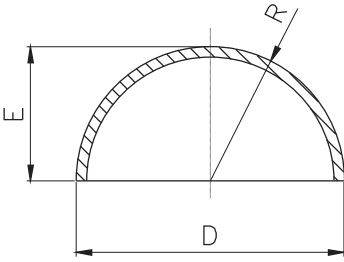
Kalınlık = 1 mm.

Boru Çapları (D)	(E)
15x15	4.6
30x30	4.6
40x40	6.5
50x50	6
60x60	10
80x80	10.5



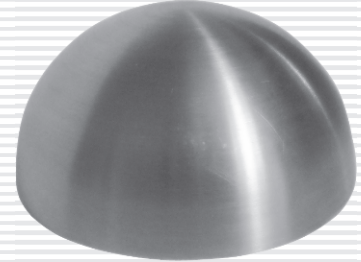
Saten - Parlak

KAYNAKLI KÜRE KAPAK - KK



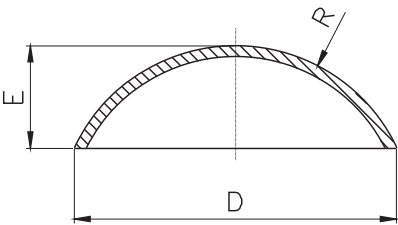
Malzeme = AISI 304

Boru Çapları (D)	Malzeme Kalınlığı	(E)
Ø16	1,5 mm.	8
Ø19	1,5 mm.	9,5
Ø21	1,5 mm.	10,5
Ø25	1,5 mm.	12,5
Ø32	1,5 mm.	16
Ø38	1,5 mm.	19
Ø42	1,5 mm.	21
Ø48	2 mm.	24
Ø51	2 mm.	25,5
Ø60	2 mm.	30
Ø70	2 mm.	35
Ø76	1,5 mm.	38
Ø90	1,5 mm.	45



Saten - Parlak

KAYNAKLI KAPAK - KKC (ÇİN ŞAPKASI)



Malzeme = AISI 304

Boru Çapları (D)	(E)
Ø42	14.8
Ø51	15.6
Ø60	19
Ø76	8.2
Ø100,6	13



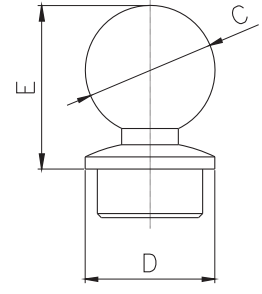
Saten - Parlak



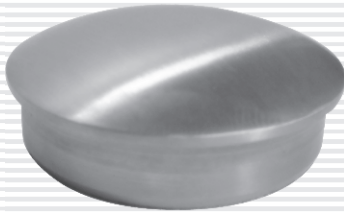
Saten - Parlak

KÜRE GEÇME KAPAK DOLU - KGKD

Boru Çapları (D)	(C)	(E)
Ø 16 x 1.5	Ø 16	20.2
Ø 19 x 1.5	Ø 19	22.6
Ø 21 x 1.5	Ø 21	25.3
Ø 25 x 1.5	Ø 25	28.3
Ø 32 x 1.5	Ø 32	36.8
Ø 38 x 1.5	Ø 38	41.8
Ø 42 x 1.5	Ø 42	45.8



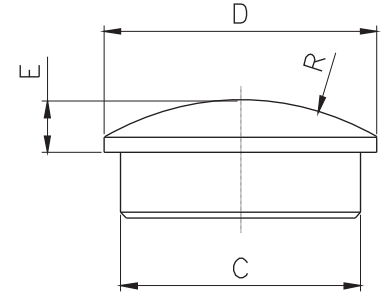
Malzeme = AISI 303-304



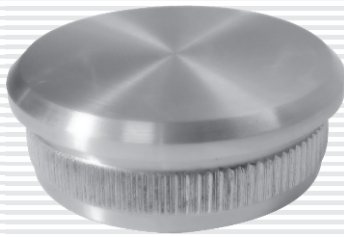
Saten - Parlak

İÇE GEÇME KAPAK DOLU - GKD

Boru Çapları (D)	(C)	(E)
Ø 16 x 1.5	Ø 13	4.5
Ø 19 x 1.5	Ø 16	4.5
Ø 21 x 1.5	Ø 18	4.5
Ø 25 x 1.5	Ø 22	4.5
Ø 32 x 1.5	Ø 29	4.5
Ø 38 x 1.5	Ø 35	5.5
Ø 42 x 1.5	Ø 39	7



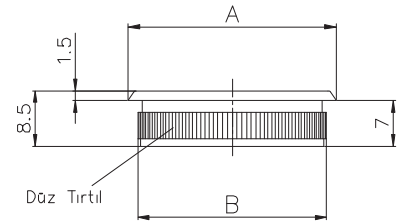
Malzeme = AISI 303-304



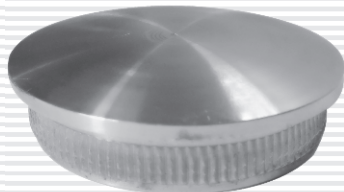
Saten - Parlak

DOLU TIRNAKLI KAPAK DTK

Boru Çapları (A)	(B)
Ø 32 x 1.5	Ø 29.4
Ø 38 x 1.5	Ø 35.4
Ø 42 x 1.5	Ø 39.4
Ø 42 x 2	Ø 38.7
Ø 51 x 1.5	Ø 48.4



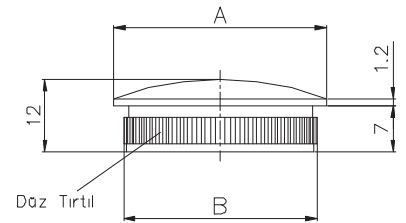
Malzeme = AISI 304-316



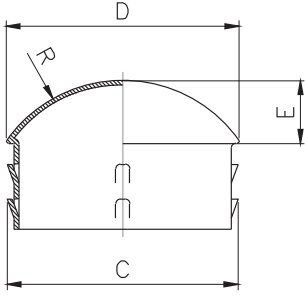
Saten - Parlak

DOLU TIRNAKLI KAPAK BOMBELİ - DTKB

Boru Çapları (A)	(B)
Ø 32 x 1.5	Ø 29.4
Ø 38 x 1.5	Ø 35.4
Ø 42 x 1.5	Ø 39.4
Ø 42 x 2	Ø 38.7
Ø 51 x 1.5	Ø 48.4

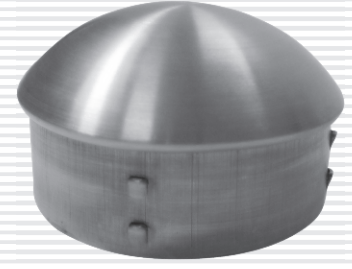


Malzeme = AISI 304-316

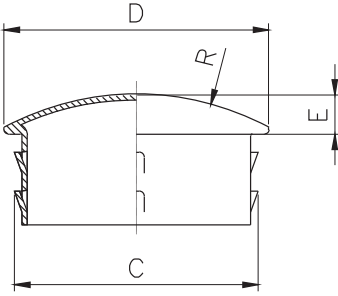
TIRNAKLI İÇE GEÇME KAPAK (BOMBELİ) - TKB


Malzeme = AISI 304

Boru Çapları (D)	(C)	(E)
Ø42 x 1.5	Ø40	11.5
Ø51 x 1.5	Ø49	15
Ø60 x 1.5	Ø58.5	18

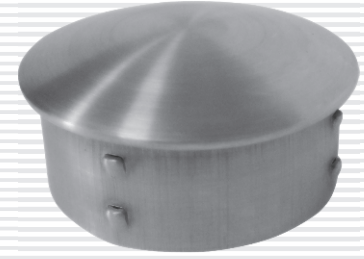


Saten - Parlak

TIRNAKLI İÇE GEÇME KAPAK - TK


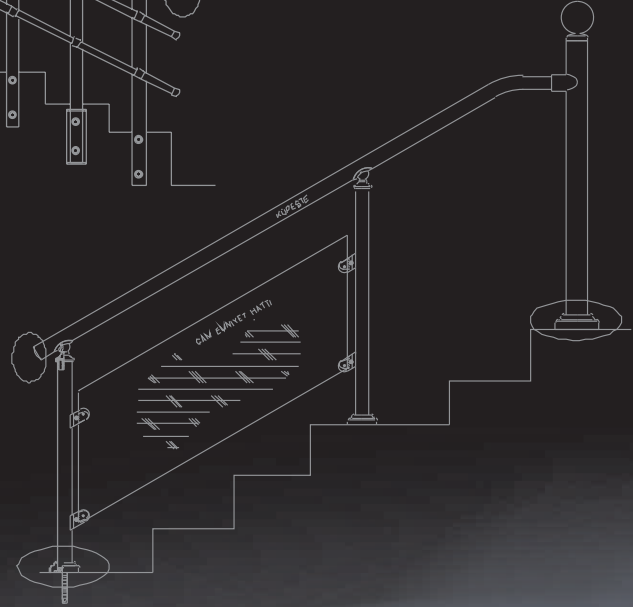
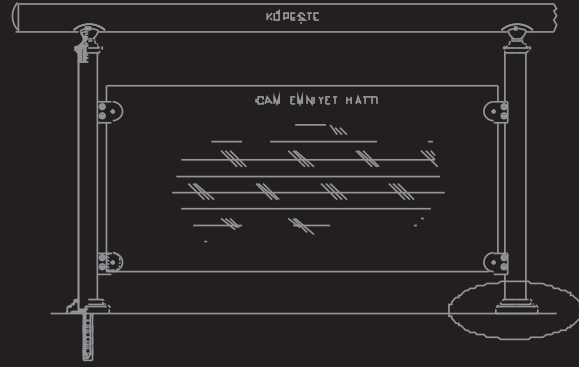
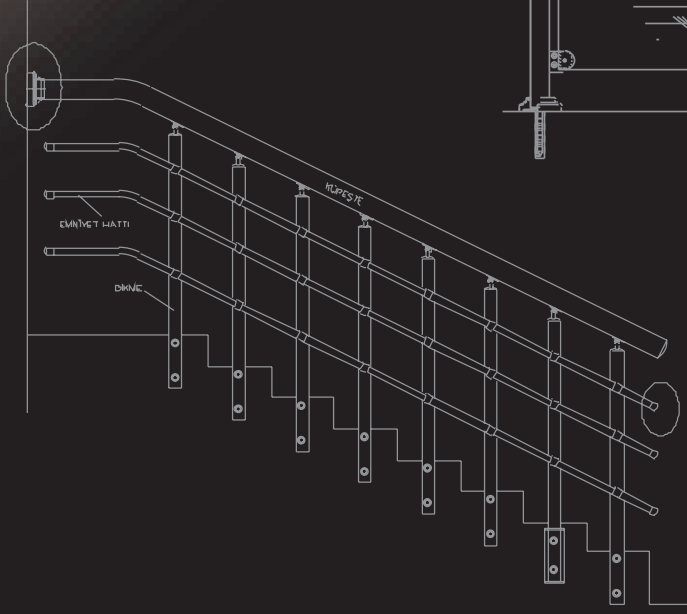
Malzeme = AISI 304

Boru Çapları (D)	(C)	(E)
Ø32 x 1.5	Ø30.5	4
Ø38 x 1.5	Ø36.5	5.5
Ø40 x 1.5	Ø38	6.5
Ø42 x 1.5	Ø40	6.5
Ø48 x 1.5	Ø45.5	6
Ø51 x 1.5	Ø49	7.5
Ø60 x 1.5	Ø57.5	9.5
Ø70 x 1.5	Ø68	11.3
Ø76 x 1.5	Ø74	12



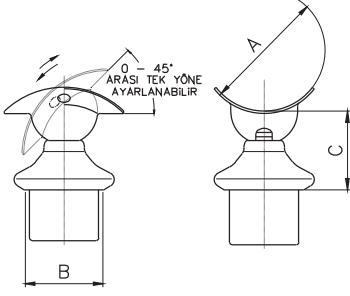
Saten - Parlak

DİKME MAFSALLARI



DİKME MAFSALLARI

DİKME MAFSAL / DM-100



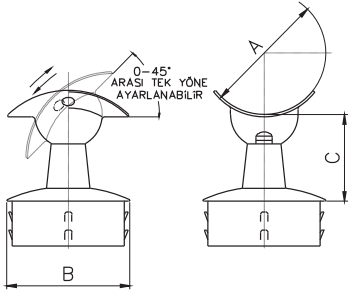
Malzeme = AISI 304 - Plastik

Küpeşte Çapları (A)	Dikme Çapları (B)	(C)
Ø32-38-42-48-51-60	Ø32 x 1.5	36
Ø38-42-48-51-60	Ø38 x 1.5	36
Ø42-48-51-60	Ø40 x 1.5	42
Ø42-48-51-60	Ø42 x 1.5	42
Ø51-60	Ø51 x 1.5	42
Ø60	Ø60 x 1.5	45



Saten - Parlak

DİKME MAFSAL / DMTK-100



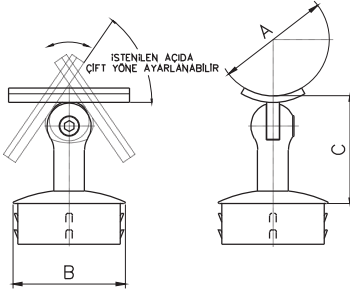
Malzeme = AISI 304

Küpeşte Çapları (A)	Dikme Çapları (B)	(C)
Ø32-38-42-48-51-60	Ø32 x 1.5	36
Ø38-42-48-51-60	Ø38 x 1.5	37
Ø42-48-51-60	Ø40 x 1.5	38
Ø42-48-51-60	Ø42 x 1.5	38
Ø48-51-60	Ø48 x 1.5	38
Ø51-60	Ø51 x 1.5	39
Ø60	Ø60 x 1.5	39



Saten - Parlak

DİKME MAFSAL / DM-200



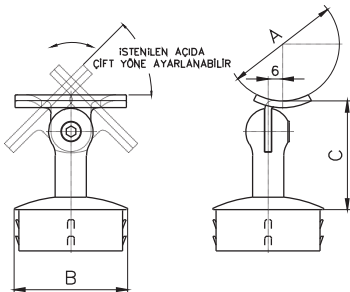
Malzeme = AISI 304

Küpeşte Çapları (A)	Dikme Çapları (B)	(C)
Ø32-38-42-48-51-60	Ø32 x 1.5	46
Ø38-42-48-51-60	Ø38 x 1.5	46
Ø42-48-51-60	Ø40 x 1.5	46
Ø42-48-51-60	Ø42 x 1.5	46
Ø48-51-60	Ø48 x 1.5	46
Ø51-60	Ø51 x 1.5	46
Ø60	Ø60 x 1.5	53



Saten - Parlak

DİKME MAFSAL / DMA-200



Malzeme = AISI 304

Küpeşte Çapları (A)	Dikme Çapları (B)	(C)
Ø32-38-42-48-51-60	Ø32 x 1.5	46
Ø38-42-48-51-60	Ø38 x 1.5	46
Ø42-48-51-60	Ø40 x 1.5	46
Ø42-48-51-60	Ø42 x 1.5	46
Ø48-51-60	Ø48 x 1.5	46
Ø51-60	Ø51 x 1.5	46
Ø60	Ø60 x 1.5	53



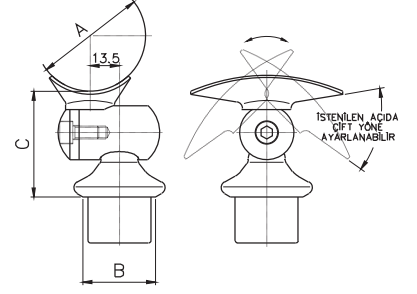
Saten - Parlak



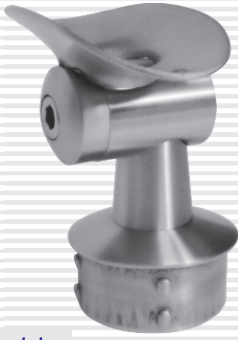
Saten - Parlak

DİKME MAFSAL / DM-300

Küpeşte Çapları (A)	Dikme Çapları (B)	(C)
Ø51	Ø32 x 1.5	49
Ø51	Ø38 x 1.5	49
Ø51	Ø40 x 1.5	49
Ø51	Ø42 x 1.5	49
Ø51	Ø51 x 1.5	49



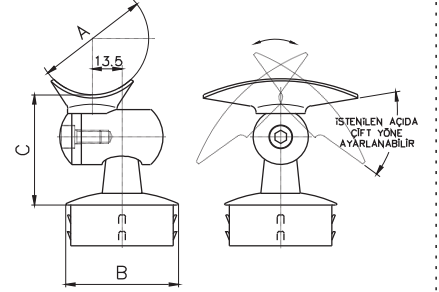
Malzeme = AISI 304 + Plastik



Saten - Parlak

DİKME MAFSAL / DMTK-300

Küpeşte Çapları (A)	Dikme Çapları (B)	(C)
Ø51	Ø32 x 1.5	50
Ø51	Ø38 x 1.5	50
Ø51	Ø40 x 1.5	50
Ø51	Ø42 x 1.5	50
Ø51	Ø48 x 1.5	50
Ø51	Ø51 x 1.5	50



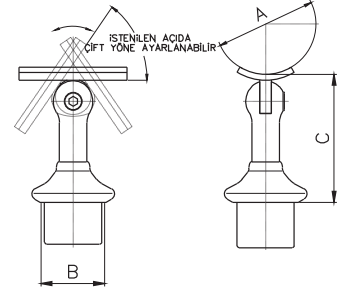
Malzeme = AISI 304



Saten - Parlak

DİKME MAFSAL / DM-400

Küpeşte Çapları (A)	Dikme Çapları (B)	(C)
Ø32-38-42-48-51-60	Ø32 x 1.5	65
Ø38-42-48-51-60	Ø38 x 1.5	65
Ø42-48-51-60	Ø40 x 1.5	65
Ø42-48-51-60	Ø42 x 1.5	65
Ø51-60	Ø51 x 1.5	65
Ø51-60	Ø60 x 1.5	65



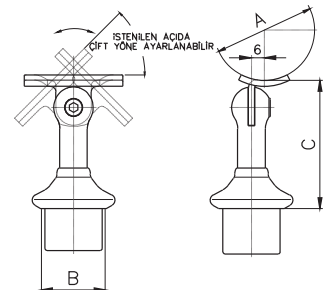
Malzeme = AISI 304 + Plastik



Saten - Parlak

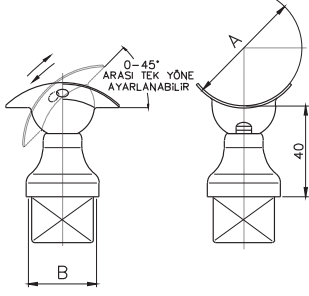
DİKME MAFSAL / DMA-400

Küpeşte Çapları (A)	Dikme Çapları (B)	(C)
Ø32-38-42-48-51-60	Ø32 x 1.5	65
Ø38-42-48-51-60	Ø38 x 1.5	65
Ø42-48-51-60	Ø40 x 1.5	65
Ø42-48-51-60	Ø42 x 1.5	65
Ø51-60	Ø51 x 1.5	65
Ø51-60	Ø60 x 1.5	65



Malzeme = AISI 304 + Plastik

DİKME MAFSAL KARE / DM-500



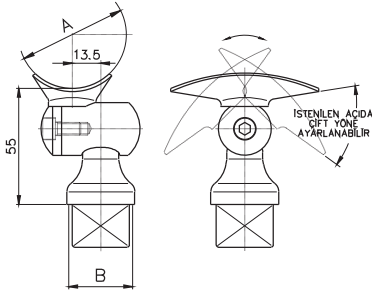
Küpeşte Çapları (A)	Profil Ölçüsü (B)
Ø 32-38-42-48-51-60	30x30x1.5

Malzeme = AISI 304 + Plastik



Saten - Parlak

DİKME MAFSAL KARE / DM-600



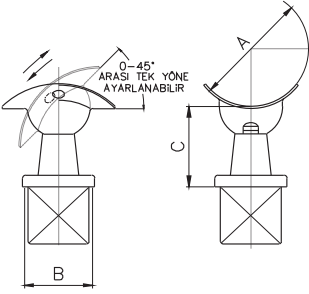
Küpeşte Çapları (A)	Profil Ölçüsü (B)
Ø 51	30x30x 1.5

Malzeme = AISI 304 + Plastik



Saten - Parlak

DİKME MAFSAL KARE / DM-700



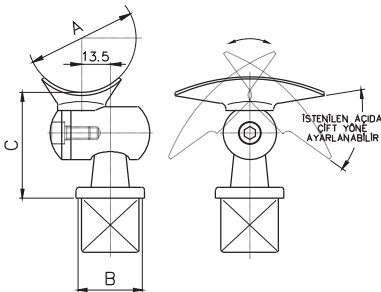
Küpeşte Çapları (A)	Dikme Çapları (B)	(C)
Ø 38-42-48-51-60	30x30x 1.5	36
	40x40x 1.5	36
	50x50x 1.5	36

Malzeme = AISI 304 + Plastik



Saten - Parlak

DİKME MAFSAL KARE / DM-800



Küpeşte Çapları (A)	Dikme Çapları (B)	(C)
Ø 51	30x30x 1.5	55
	40x40x 1.5	55
	50x50x 1.5	55

Malzeme = AISI 304 + Plastik



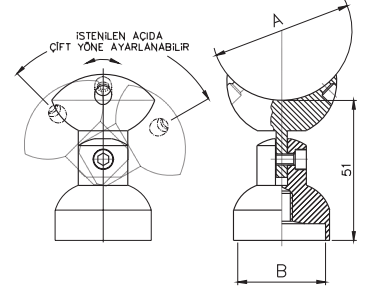
Saten - Parlak



Saten - Parlak

DİKME MAFSAL / DM-900

Küpeşte Çapları (A)	Dikme Çapları (B)
Ø51	Ø32 x 1.5
Ø51	Ø38 x 1.5
Ø51	Ø42 x 1.5
Ø51	Ø50 x 1.5



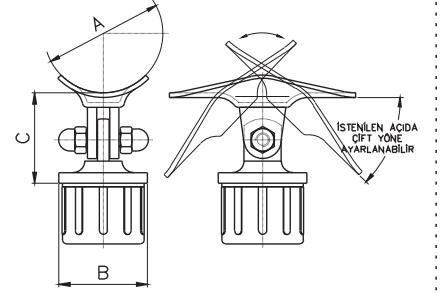
Malzeme = AISI 304



Saten - Parlak

DİKME MAFSAL / DM-1000

Küpeşte Çapları (A)	Dikme Çapları (B)	(C)
Ø51	Ø32 x 1.5	50
Ø51	Ø38 x 1.5	50
Ø51	Ø42 x 1.5	50
Ø51	Ø50 x 1.5	50



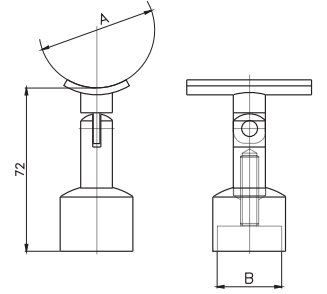
Malzeme = AISI 304-Plastik



Saten - Parlak

DİKME MAFSAL / DM-1100

Küpeşte Çapları (A)	Dikme Çapları (B)
Ø32-38-42-48-51-60	Ø32 x 1.5
Ø38-42-48-51-60	Ø38 x 1.5
Ø42-48-51-60	Ø42 x 1.5
Ø51-60	Ø51 x 1.5



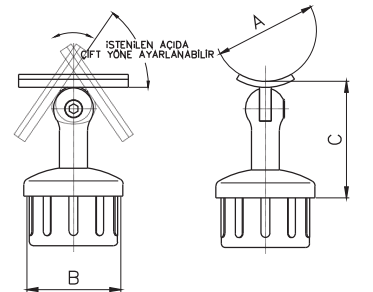
Malzeme = AISI 304-316



Saten - Parlak

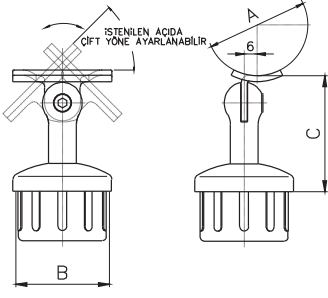
DİKME MAFSAL / DM-1200

Küpeşte Çapları (A)	Dikme Çapları (B)	(C)
Ø32-38-42-48-51-60	Ø32 x 1.5	65
Ø38-42-48-51-60	Ø38 x 1.5	65
Ø42-48-51-60	Ø40 x 1.5	65
Ø42-48-51-60	Ø42 x 1.5	65
Ø51-60	Ø51 x 1.5	65
Ø51-60	Ø60 x 1.5	65



Malzeme = AISI 304-Plastik

DİKME MAFSAL / DMA-1200



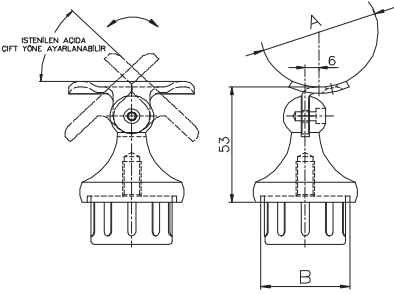
Malzeme = AISI 304-Plastik

Küpeşte Çapları (A)	Dikme Çapları (B)	(C)
Ø32-38-42-48-51-60	Ø32 x 1.5	60
Ø38-42-48-51-60	Ø38 x 1.5	60
Ø42-48-51-60	Ø40 x 1.5	60
Ø42-48-51-60	Ø42 x 1.5	60
Ø51-60	Ø51 x 1.5	60
Ø60	Ø60 x 1.5	60



Saten - Parlak

DİKME MAFSAL / DMA-1300



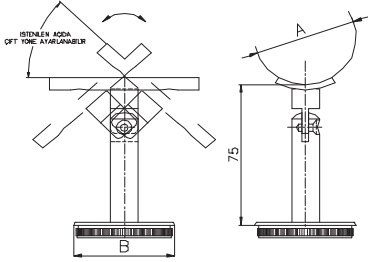
Malzeme = AISI 304-316-Plastik

Küpeşte Çapları (A)	Dikme Çapları (B)
Ø32-38-42-48-51-60	Ø32
Ø38-42-48-51-60	Ø38
Ø42-48-51-60	Ø42
Ø48-51-60	Ø48
Ø51-60	Ø51



Saten - Parlak

DİKME MAFSAL / DM-1400



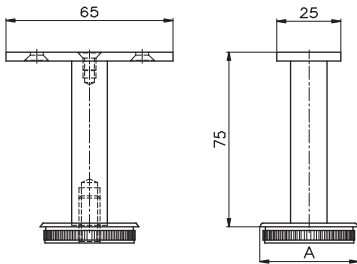
Malzeme = AISI 304-316

Küpeşte Çapları (A)	Dikme Çapları (B)
Ø32-38-42-48-51-60	Ø32 x 1.5
Ø38-42-48-51-60	Ø38 x 1.5
Ø42-48-51-60	Ø42 x 1.5
Ø42-48-51-60	Ø42 x 2
Ø51-60	Ø51 x 1.5



Saten - Parlak

DİKME MAFSAL / DM-1500



Malzeme = AISI 304-316

Dikme Çapları (A)
Ø32 x 1.5
Ø38 x 1.5
Ø42 x 1.5
Ø42 x 2
Ø51 x 1.5



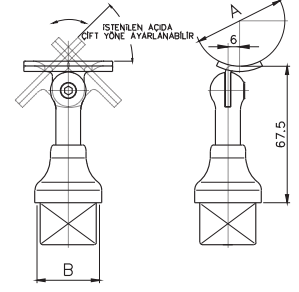
Saten - Parlak

DİKME MAFSAL KARE / DMKA-01



Saten - Parlak

Küpeşte Çapları (A)	Dikme Çapları (B)
Ø 42-48-51-60	30x30x 1.5



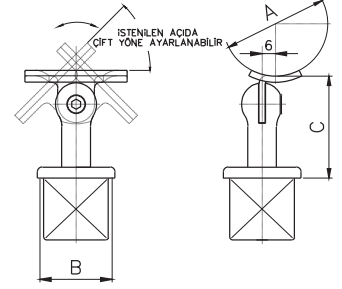
Malzeme = AISI 304-Plastik

DİKME MAFSAL KARE / DMKA-02



Saten - Parlak

Küpeşte Çapları (A)	Dikme Çapları (B)	(C)
Ø 42-48-51-60	30x30x 1.5	46
	40x40x 1.5	46
	50x50x 1.5	46



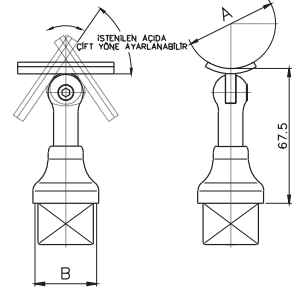
Malzeme = AISI 304-Plastik

DİKME MAFSAL KARE / DMK-01



Saten - Parlak

Küpeşte Çapları (A)	Dikme Çapları (B)
Ø 42-48-51-60	30x30x 1.5



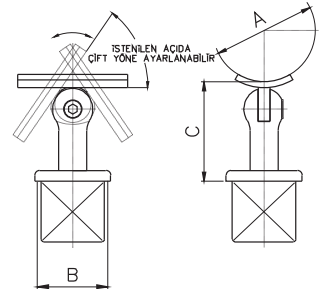
Malzeme = AISI 304-Plastik

DİKME MAFSAL KARE / DMK-02



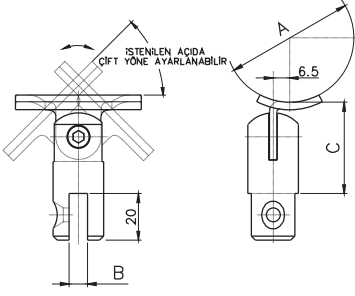
Saten - Parlak

Küpeşte Çapları (A)	Dikme Çapları (B)	(C)
Ø 42-48-51-60	30x30x 1.5	46
	40x40x 1.5	46
	50x50x 1.5	46



Malzeme = AISI 304-Plastik

DİKME MAFSAL / DM-LMA



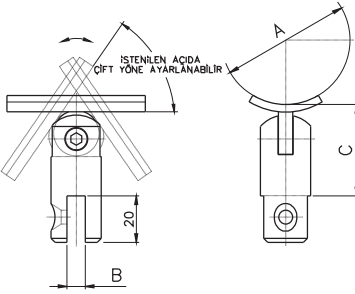
Malzeme = AISI 304

Küpeşte Çapları (A)	Dikme Lamalı (B)	(C)
Ø 32-38-42-48-51-60	5 mm.	37
	10 mm.	37



Saten - Parlak

DİKME MAFSAL / DM-LM



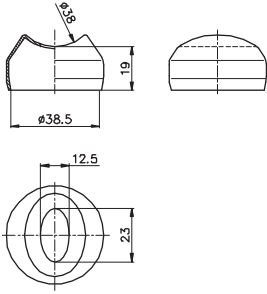
Malzeme = AISI 304

Küpeşte Çapları (A)	Dikme Çapları (B)	(C)
Ø 32-38-42-48-51-60	5 mm.	37
	10 mm.	37



Saten - Parlak

Ø 38 - DİKME TEPESİ

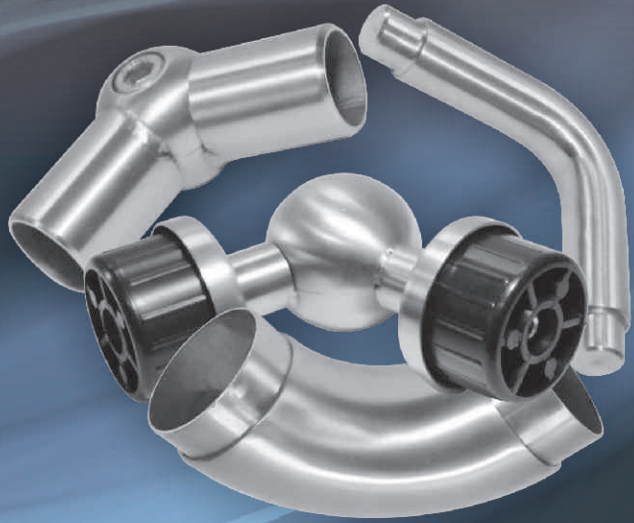
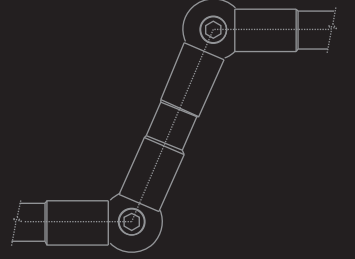
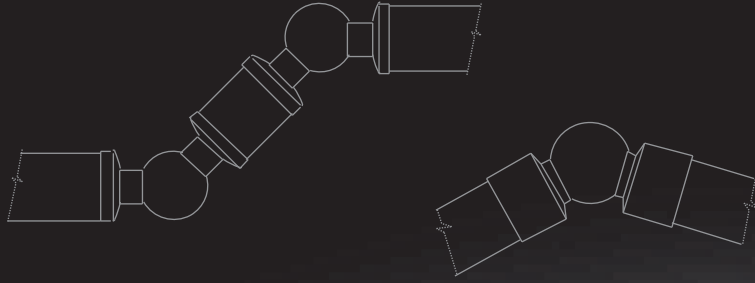
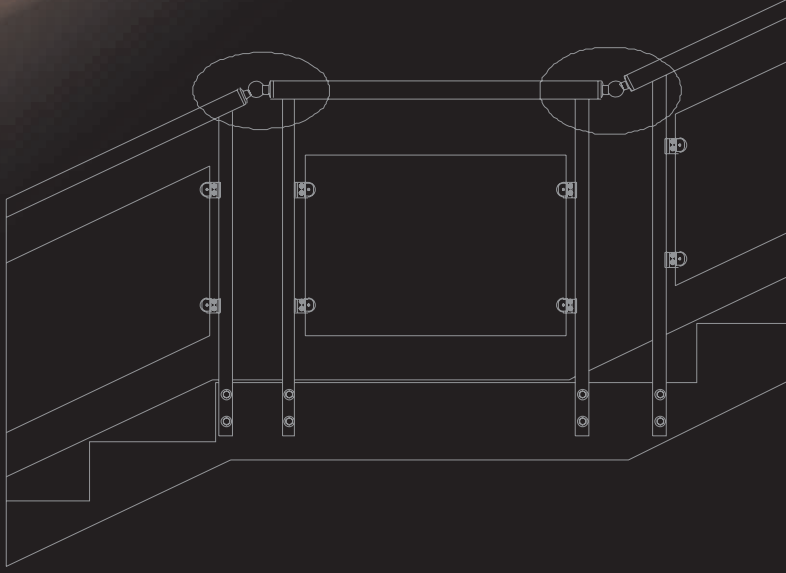


Malzeme = AISI 304-316

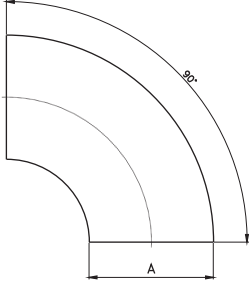


Saten - Parlak

KÖŞE MAFSALLARI VE PATEN DİRSEKLER



KÖŞE MAFSALLARI VE PATEN DİRSEKLER

PATEN DİRSEK / PD-90


Malzeme = AISI 304

Boru Çapları (A)

Ø 25

Ø 32

Ø 38

Ø 42

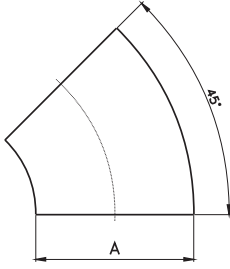
Ø 48

Ø 51

Ø 60



Saten - Parlak

PATEN DİRSEK / PD-45


Malzeme = AISI 304

Boru Çapları (A)

Ø 25

Ø 32

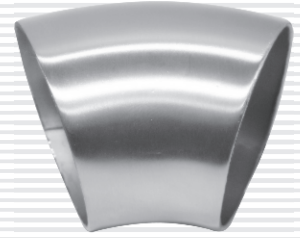
Ø 38

Ø 42

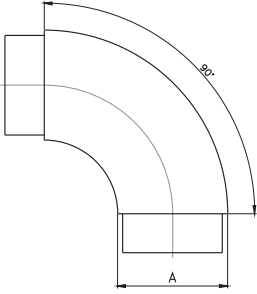
Ø 48

Ø 51

Ø 60



Saten - Parlak

GEÇMELİ PATEN DİRSEK / GPD-90


Malzeme = AISI 304

Boru Çapları (A)

Ø 32 x 1.5

Ø 38 x 1.5

Ø 42 x 1.5

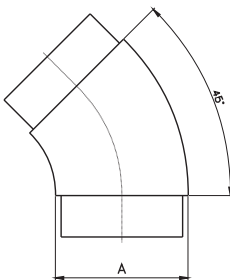
Ø 48 x 1.5

Ø 51 x 1.5

Ø 60 x 1.5



Saten - Parlak

GEÇMELİ PATEN DİRSEK / GPD-45


Malzeme = AISI 304

Boru Çapları (A)

Ø 32 x 1.5

Ø 38 x 1.5

Ø 42 x 1.5

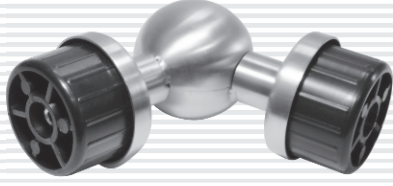
Ø 48 x 1.5

Ø 51 x 1.5

Ø 60 x 1.5



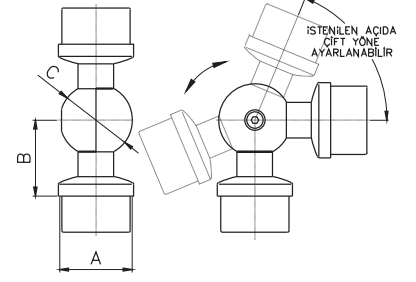
Saten - Parlak



Saten - Parlak

KÖŞE MAFSAL - KM

Boru Çapları (A)	(B)	Küre (C)
Ø 32 x 1.5	45	32
Ø 38 x 1.5	47	42
Ø 42 x 1.5	52	42
Ø 51 x 1.5	55	51
Ø 60 x 1.5	62	60
Ø 70 x 1.5	73	70
Ø 76 x 1.5	78	76

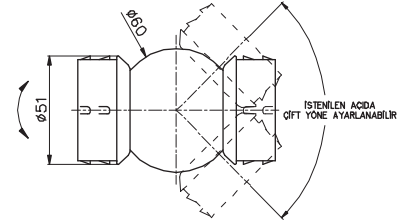


Malzeme = AISI 304



Saten - Parlak

HAREKETLİ DİRSEK / HD-51

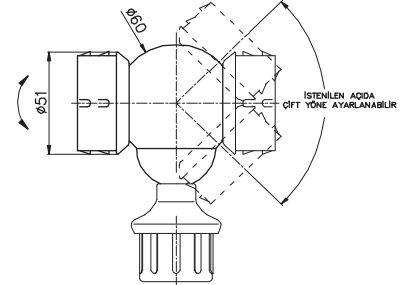


Malzeme = AISI 304-316

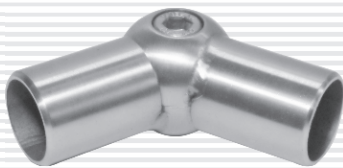


Saten - Parlak

HAREKETLİ DİRSEK KÖŞE / HDK-51



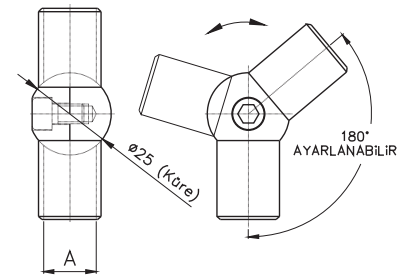
Malzeme = AISI 304-316



Saten - Parlak

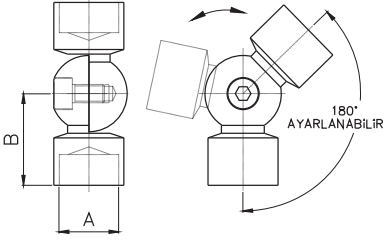
KÖŞE MAFSAL / KM-16

Boru Çapları (A)
Ø 16



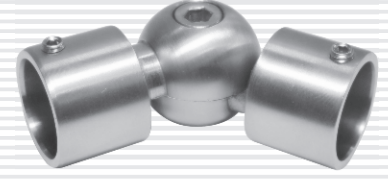
Malzeme = AISI 304-303

KÖŞE MAFSAL - KMD



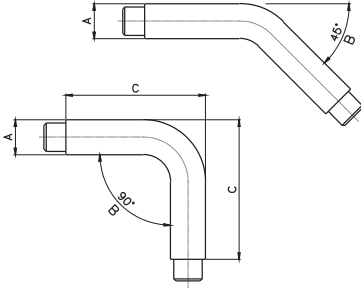
Malzeme = AISI 304-303

Boru Çapları (A)	(B)
Ø 16	29
Ø 19	30



Saten - Parlak

GEÇMELİ PATEN DİRSEK - GPD



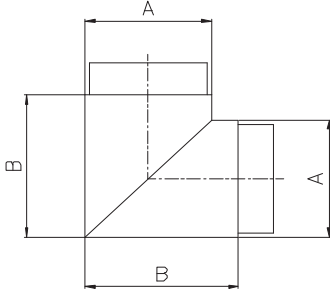
Malzeme = AISI 304

Boru Çapları (A)	(B)	(C)
Ø 12 x 1.5	45° - 90°	60
Ø 16 x 1.5	45° - 90°	64
Ø 19 x 1.5	45° - 90°	69



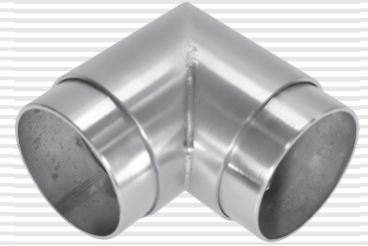
Saten - Parlak

KAYNAKLI KÖŞE MAFSAL



Malzeme = AISI 304-316

Boru Çapları (A)	(B)
Ø 32 x 1.5	41
Ø 38 x 1.5	47
Ø 42 x 1.5	52
Ø 51 x 1.5	62



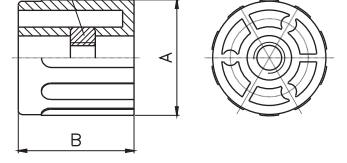
Saten - Parlak

Saten - Parlak

PLASTİK TAKOZ / PT


Boru Çapları (A)	(B)	(C)
Ø32	30	M6 - M8
Ø38	30	M6 - M8
Ø40	30	M6 - M8
Ø42	30	M6 - M8
Ø51	34	M8 - M10
Ø60	34	M8 - M10

(C) somun
DIN 934

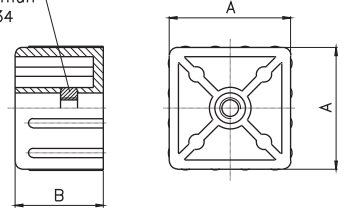


Malzeme = POLYAMİD

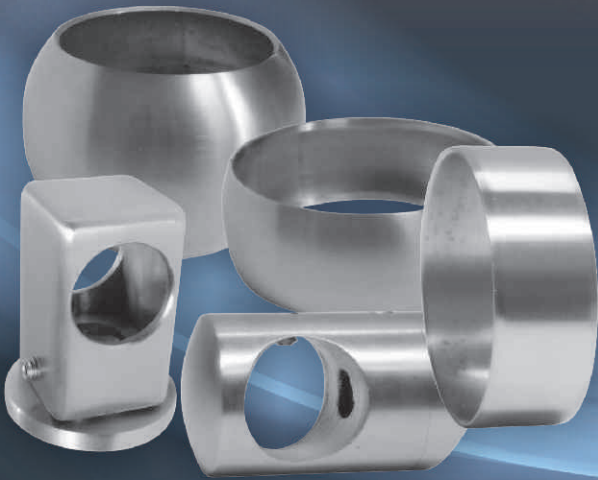
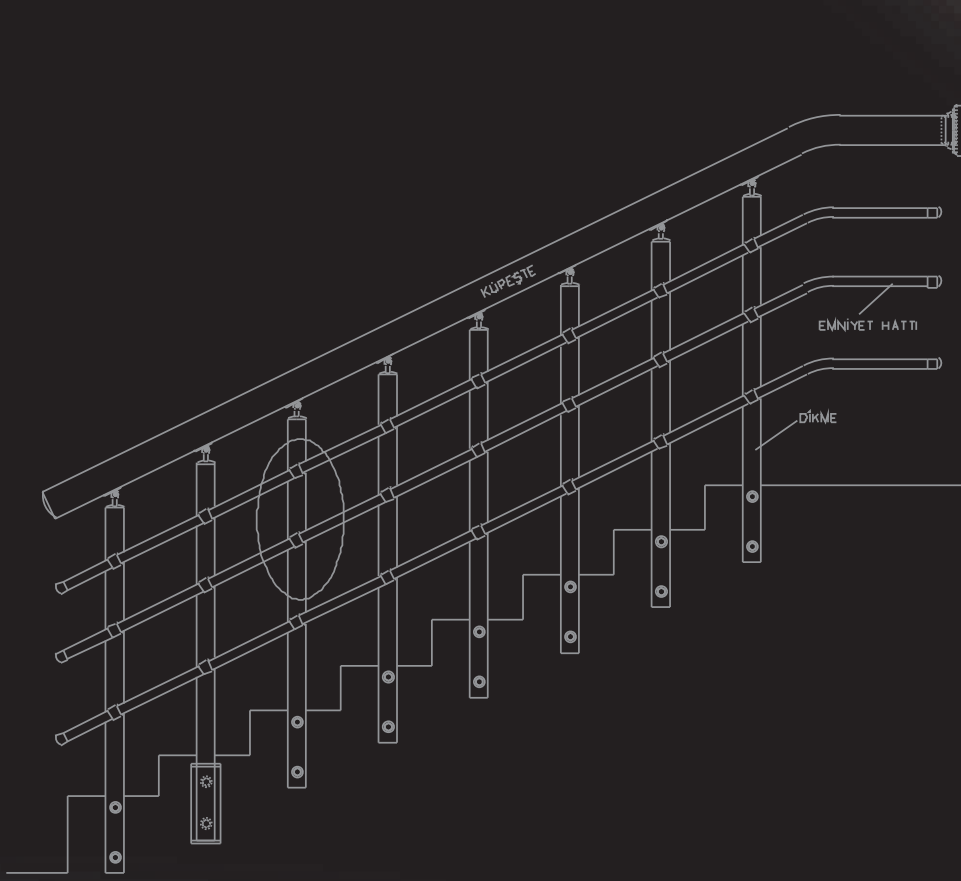
PLASTİK TAKOZ / PTK


Boru Çapları (A)	(B)	(C)
30x30 x1.5	30	M6 - M8
40x40 x1.5	30	M6 - M8
50x50 x1.5	34	M8 - M10

(C) somun
DIN 934

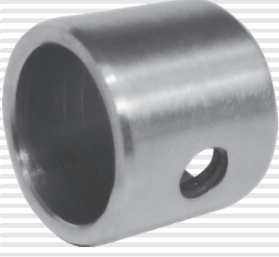


Malzeme = POLYAMİD



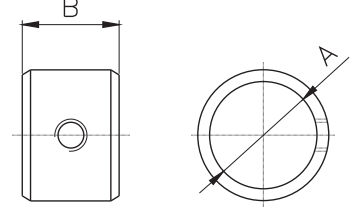
**EMNİYET HATTI
BAĞLANTI YÜZÜKLERİ**

EMNİYET HATTI BAĞLANTI YÜZÜKLERİ

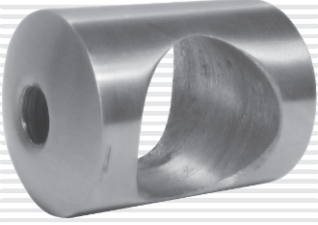
BAĞLANTI YÜZÜK / BY-100


Saten - Parlak

Boru Çapları (A)	(B)
Ø16	18
Ø19	18
Ø21	18
Ø25	18
Ø32	25
Ø38	25

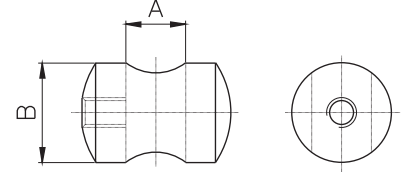


Malzeme = AISI 304

BADEM YÜZÜK / BY-200


Saten - Parlak

Boru Çapları (A)	(B)
Ø8-10-12-16	20
Ø19	25

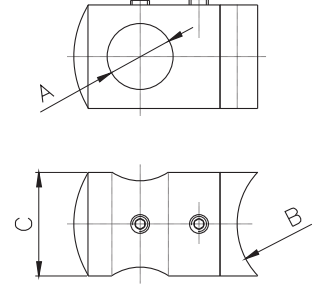


Malzeme = AISI 304-316

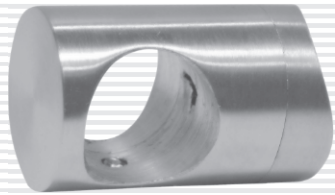
KURT AĞIZLI BADEM YÜZÜK / BY-300


Saten - Parlak

Boru Çapları (A)	Kurtağızlı Ölçüleri (B)	(C)
Ø8-10-12-16	Ø32-38-42-48-51-60	22
Ø19	Ø32-38-42-48-51-60	25

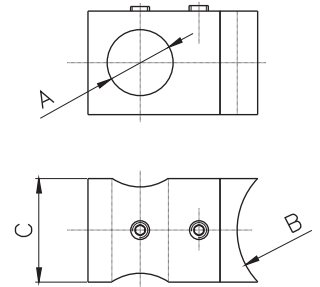


Malzeme = AISI 304-316

DÜZ KURT AĞIZLI BADEM YÜZÜK / BY-301


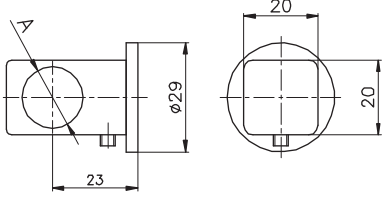
Saten - Parlak

Boru Çapları (A)	Kurtağızlı Ölçüleri (B)	(C)
Ø8-10-12-16	Ø32-38-42-48-51-60	22
Ø19	Ø32-38-42-48-51-60	25



Malzeme = AISI 304

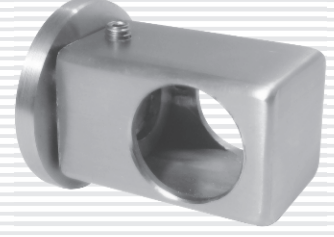
KARE BADEM YÜZÜK / BY-302



Malzeme = AISI 304-316

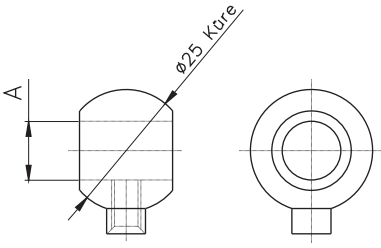
Boru Çapları (A)

Ø 8-10-12-16



Saten - Parlak

KÜRE YÜZÜK / BY-400



Malzeme = AISI 304-316

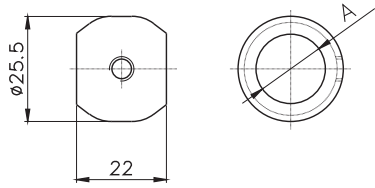
Boru Çapları (A)

Ø 8-10-12-16



Saten - Parlak

DEKORATİF YÜZÜK / BY-500



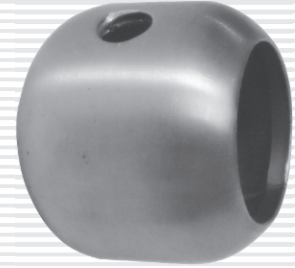
Malzeme = AISI 304-316

Boru Çapları (A)

Ø 16

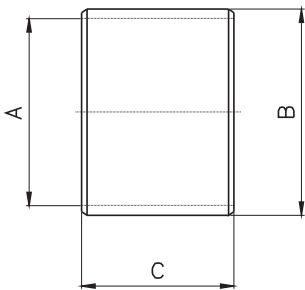
Ø 19

Ø 25



Saten - Parlak

BİLEZİK / B



Malzeme = AISI 304

Küpeşte Çapları (A)

Ø 16

Ø 32

Ø 38

Ø 42

Ø 48

Ø 51

Ø 60

Dikme Çapları (B)

Ø 19.3 x 1.2

Ø 35 x 1.5

Ø 42 x 2

Ø 45 x 1.5

Ø 51 x 1.5

Ø 54 x 1.5

Ø 63 x 1.5

(C) mm.

20-40

20-40

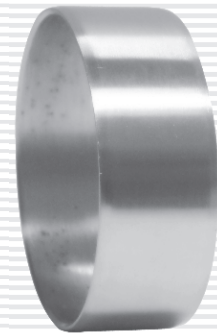
20-40

20-40

20-40

20-40

20-40



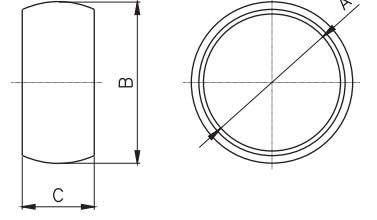
Saten - Parlak



Saten - Parlak

DEKORATİF BİLEZİK

(A)	(B)	(C)
Ø 32	Ø 38 x 1.5	20
Ø 38	Ø 45 x 1.5	20
Ø 42	Ø 48 x 1.5	20
Ø 48	Ø 54 x 1.5	24
Ø 51	Ø 57 x 1.5	20
Ø 60	Ø 70 x 1.5	30
Ø 63	Ø 70 x 1.5	30

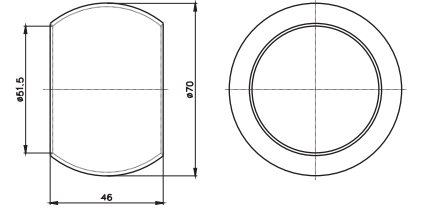


Malzeme = AISI 304



Saten - Parlak

DEKORATİF DİKME BİLEZİĞİ - 51



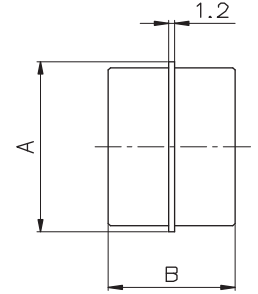
Malzeme = AISI 304



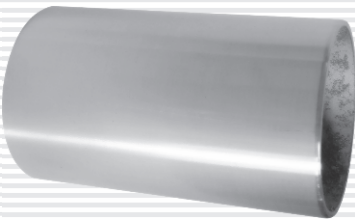
Saten - Parlak

FATURALI MANŞON

Boru Çapları (A)	(B)
Ø 16x1.5	20
Ø 32x1.5	23
Ø 38x1.5	25
Ø 42x1.5	27
Ø 51x1.5	30



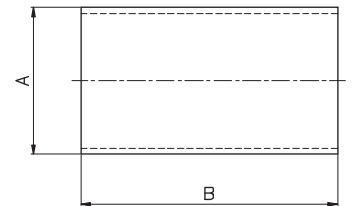
Malzeme = AISI 304



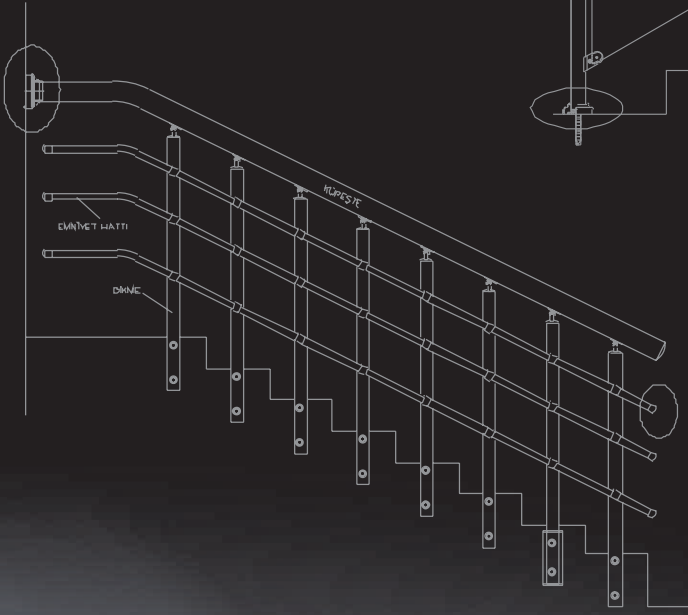
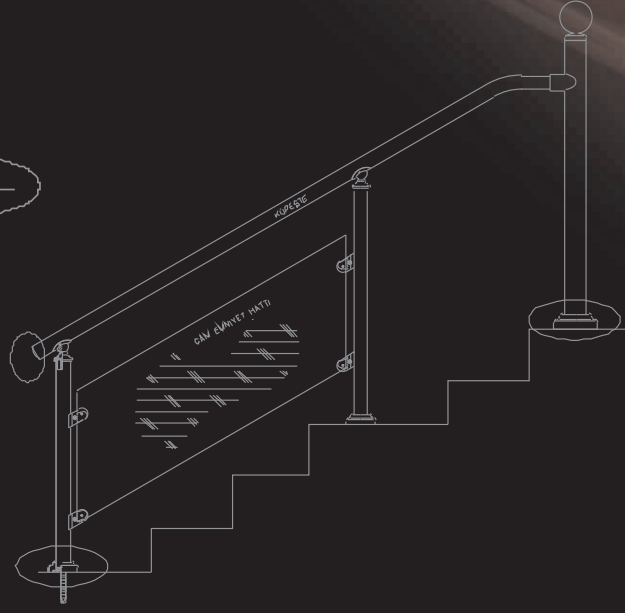
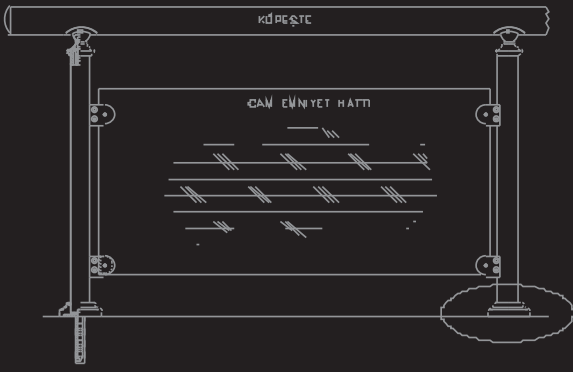
Saten - Parlak

DÜZ MANŞON

Boru Çapları (A)	(B)
Ø 16x1.5	45
Ø 32x1.5	60
Ø 38x1.5	65
Ø 42x1.5	70
Ø 51x1.5	80



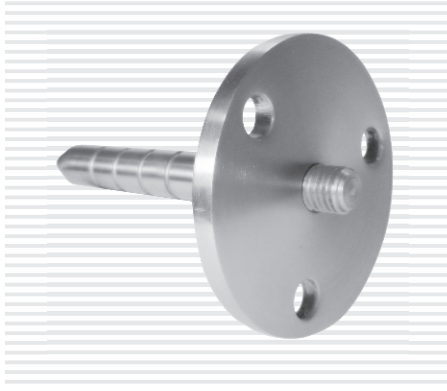
Malzeme = AISI 304-316



**ZEMİN VE DUVAR
BAĞLANTI ELEMANLARI**

ZEMİN VE DUVAR BAĞLANTI ELEMANLARI

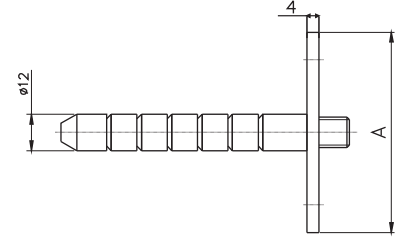
ZEMİN BAĞLANTI ANKRAJİ / ZBA-100



Flanş Çapları (A)

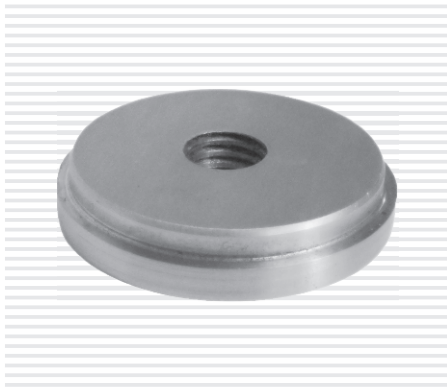
Ø66

Ø80



Malzeme = AISI 304

DİKME TABAN PULU / DTP



Boru Çapları (A)

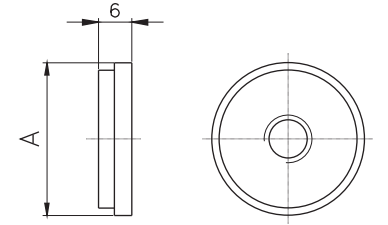
Ø32 x 1.5

Ø38 x 1.5

Ø42 x 1.5

Ø51 x 1.5

Ø60 x 1.5



Malzeme = AISI 304-303

BİTİŞ BAĞLANTISI - BB



Saten - Parlak

Boru Çapları (A)

Ø16 x 1.5

Ø25 x 1.5

Ø32 x 1.5

Ø38 x 1.5

Ø42 x 1.5

Ø48 x 1.5

Ø51 x 1.5

Ø60 x 1.5

(B)

72

72

72

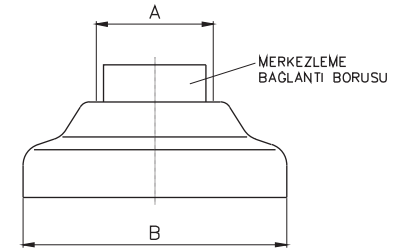
78

78

85

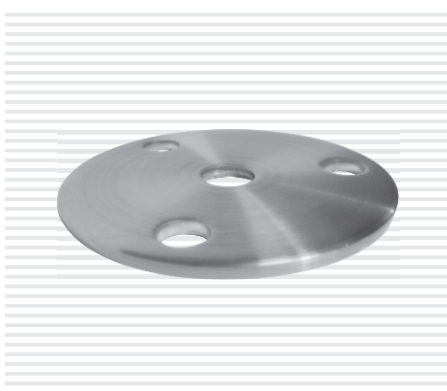
85

95



Malzeme = AISI 304-316

FLANŞ - F



Flanş Çapları (A)

Ø66

Ø80

Ø66

Ø80

Malzeme

PASLANMAZ

PASLANMAZ

DKP

DKP

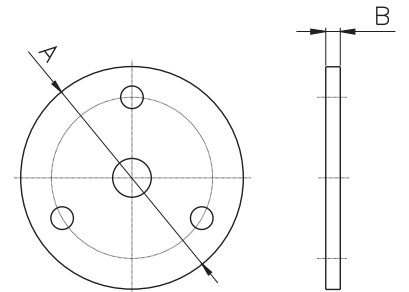
(B) mm.

3

3

5

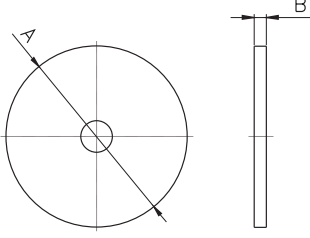
5



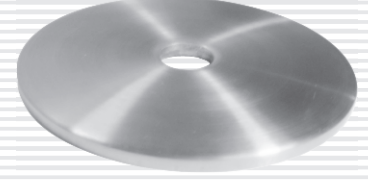
Not : İstenilen Kalınlıkta ve Ölçülerde Özel Flanş Üretilir.

Malzeme = AISI 304 / DKP

FLANŞ - F1



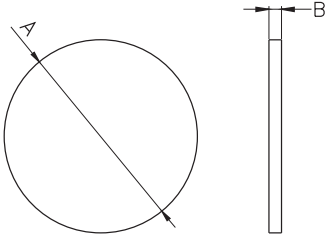
Flanş Çapları (A)	MALZEME	(B) mm.
Ø 66	PASLANMAZ	3
Ø 80	PASLANMAZ	3
Ø 66	DKP	5
Ø 80	DKP	5



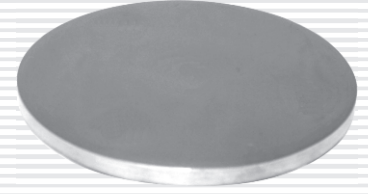
Malzeme = AISI 304 - DKP

Not : İstenilen Kalınlıkta ve Ölçülerde Özel Flanş Üretilir.

FLANŞ - F0



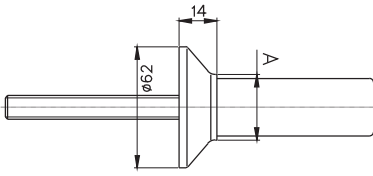
Boru Çapları (A)	Malzeme	(B)
Ø 66	PASLANMAZ	3
Ø 80	PASLANMAZ	3
Ø 66	DKP	5
Ø 80	DKP	5



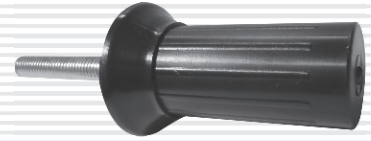
Malzeme = AISI 304 - DKP

Not : İstenilen Kalınlıkta ve Ölçülerde Özel Flanş Üretilir.

SAPLAMALI PLASTİK ANKRAJ - SPA

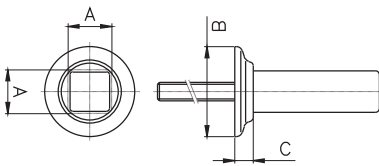


Boru Çapları (A)
Ø 32 x 1.5
Ø 38 x 1.5
Ø 42 x 1.5
Ø 51 x 1.5

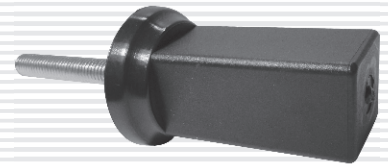


Malzeme = PLASTİK / ÇELİK

SAPLAMALI PLASTİK ANKRAJ (KARE)- SPAK

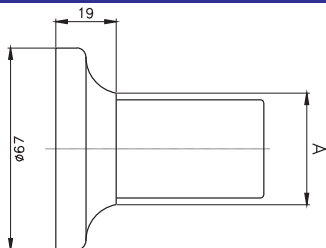


Profil Ölçüleri (A)	(B)	(C)
30x30 x1.5	59	12
40x40 x1.5	61	16

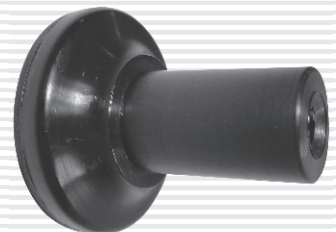


Malzeme = PLASTİK / ÇELİK

SAPLAMASIZ PLASTİK ANKRAJ - PA



Boru Çapları (A)
Ø 32 x 1.5
Ø 38 x 1.5
Ø 42 x 1.5

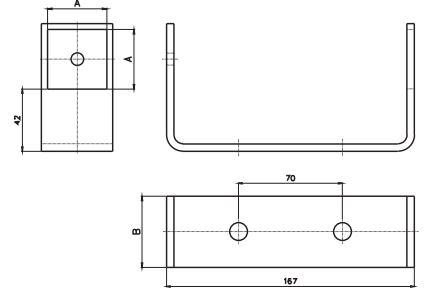


Malzeme = PLASTİK

YAN ANKRAJ BAĞLANTI ELEMANI KARE / YAK-100


Saten - Parlak

Boru Çapları (A)	(B)
30 x 30	38
40 x 40	48



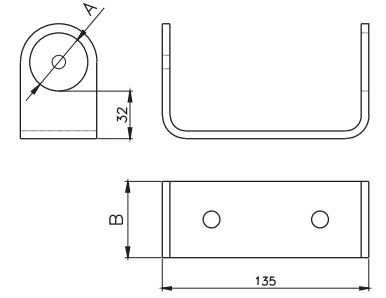
Malzeme = AISI 304-316

Kalınlık = 5 mm.

YAN ANKRAJ BAĞLANTI ELEMANI / YA-100


Saten - Parlak

Boru Çapları (A)	(B)
Ø32 x 1.5	44
Ø38 x 1.5	50
Ø42 x 1.5	54
Ø51 x 1.5	63



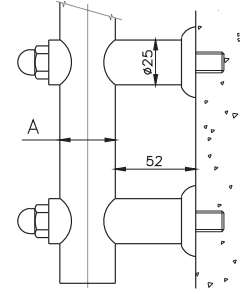
Malzeme = AISI 304-316

Kalınlık = 5 mm.

KURT AĞIZLI BORU YAN ANKRAJ - YA-200


Saten - Parlak

Boru Çapları (A)
Ø 32-38-42-48-51-60

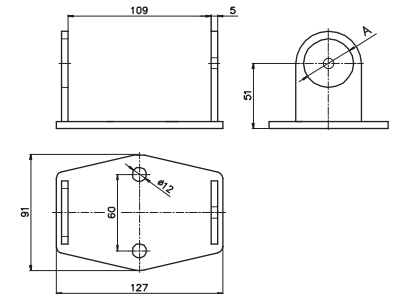


Malzeme = AISI 304-316

YAN ANKRAJ BAĞLANTI ELEMANI / YA-300

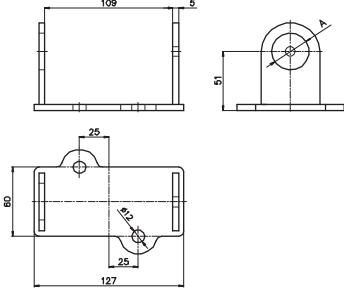

Saten - Parlak

Boru Çapları (A)
Ø32 x 1.5
Ø38 x 1.5
Ø42 x 1.5
Ø51 x 1.5



Malzeme = AISI 304-316

Kalınlık = 5 mm.

YAN ANKRAJ BAĞLANTI ELEMANI / YA-400


Malzeme = AISI 304-316

Kalınlık = 5 mm.

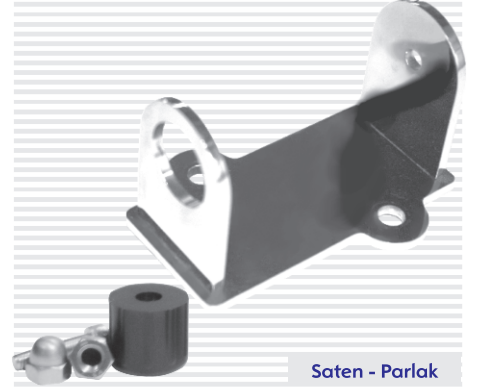
Boru Çapları (A)

Ø32 x 1.5

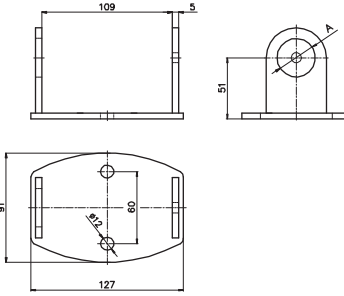
Ø38 x 1.5

Ø42 x 1.5

Ø51 x 1.5



Saten - Parlak

YAN ANKRAJ BAĞLANTI ELEMANI / YA-500


Malzeme = AISI 304-316

Kalınlık = 5 mm.

Boru Çapları (A)

Ø32 x 1.5

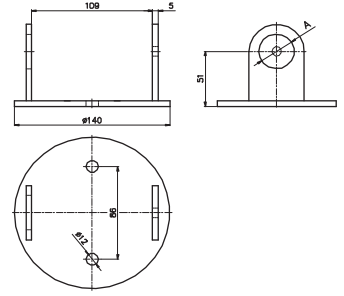
Ø38 x 1.5

Ø42 x 1.5

Ø51 x 1.5



Saten - Parlak

YAN ANKRAJ BAĞLANTI ELEMANI / YA-600


Malzeme = AISI 304-316

Kalınlık = 5 mm.

Boru Çapları (A)

Ø32 x 1.5

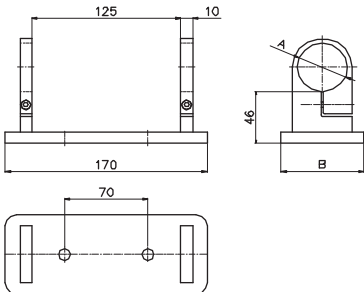
Ø38 x 1.5

Ø42 x 1.5

Ø51 x 1.5



Saten - Parlak

YAN ANKRAJ BAĞLANTI ELEMANI / YA-700


Malzeme = AISI 304-316

Boru Çapları (A)

Ø32

Ø38

Ø42

Ø51

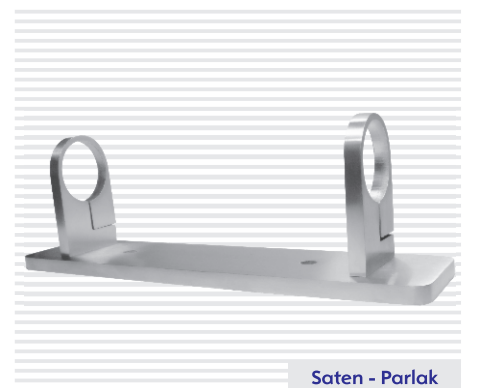
(B)

59

65

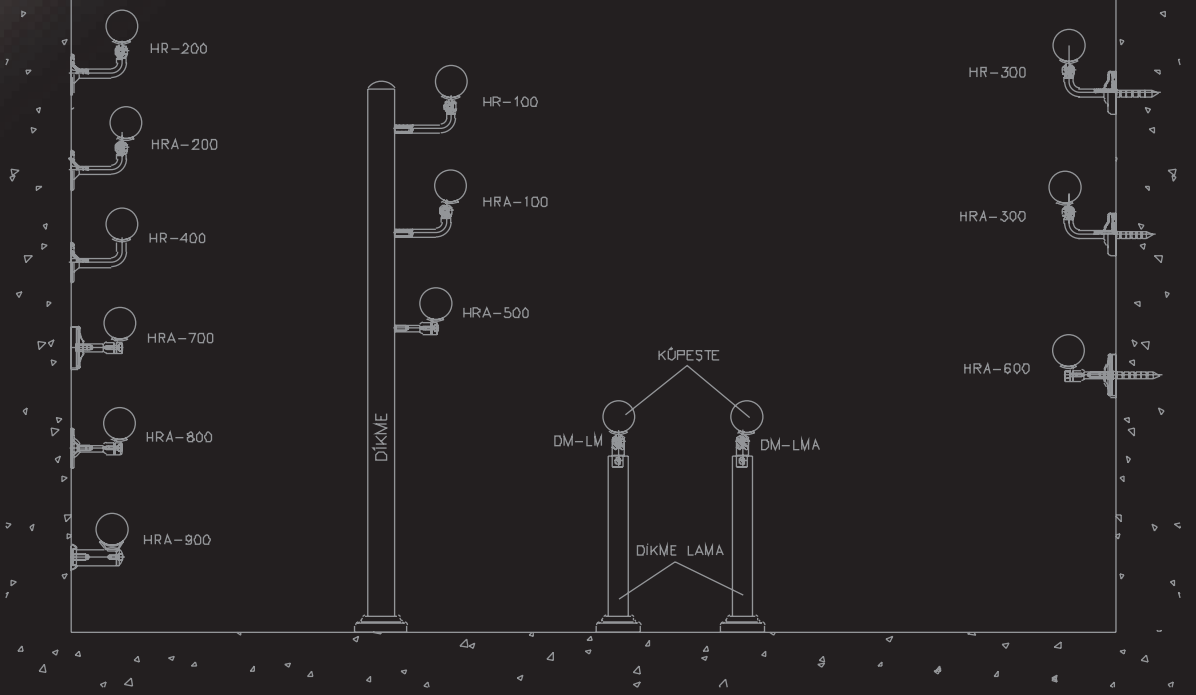
70

78



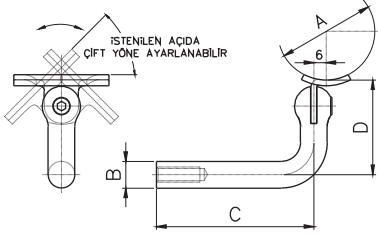
Saten - Parlak

KOLÇAKLAR



KOLÇAKLAR

DİKME KOLÇAĞI / HRA-100



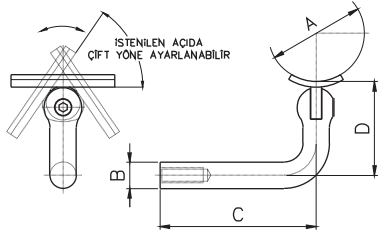
Küpeşte Çapları (A)	Kolçak Çapları (B)	(C)	(D)
Ø 32-38-42-48 Ø 51-60	Ø 12	58-72	45
Ø 32-38-42-48 Ø 51-60	Ø 14	70-90	50



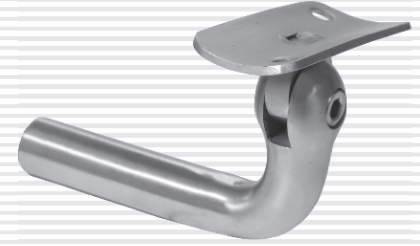
Saten - Parlak

Malzeme = AISI 303-304-316

DİKME KOLÇAĞI / HR-100



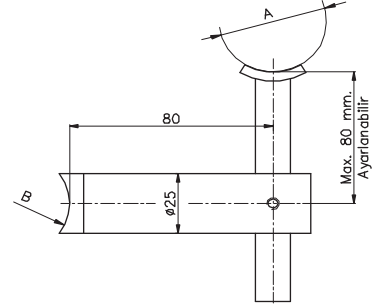
Küpeşte Çapları (A)	Kolçak Çapları (B)	(C)	(D)
Ø 32-38-42-48 Ø 51-60	Ø 12	58-72	45
Ø 32-38-42-48 Ø 51-60	Ø 14	70-90	50



Saten - Parlak

Malzeme = AISI 303-304-316

AYARLI DİKME KOLÇAĞI / HR-101



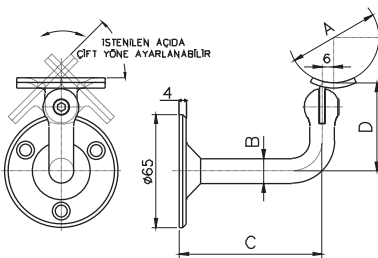
Küpeşte Çapları (A)	Dikme Çapları (B)
Ø 32-38-42-48-51-60	Ø 32
Ø 38-42-48-51-60	Ø 38
Ø 42-48-51-60	Ø 42
Ø 48-51-60	Ø 48
Ø 48-51-60	Ø 51



Saten - Parlak

Malzeme = AISI 304-316

FLANŞLI DUVAR KOLÇAĞI / HRA-200



Küpeşte Çapları (A)	Kolçak Çapları (B)	(C)	(D)
Ø 32-38-42-48 Ø 51-60	Ø 12	69-83	45
Ø 32-38-42-48 Ø 51-60	Ø 14	81-101	50



Saten - Parlak

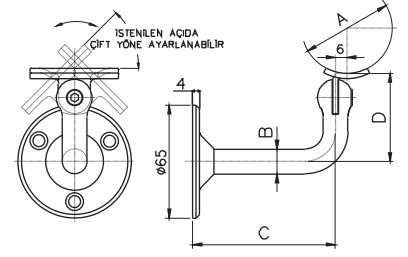
Malzeme = AISI 303-304-316

FLANŞLI DUVAR KOLÇAĞI / HRA-201



Saten - Parlak

Küpeşte Çapları (A)	Kolçak Çapları (B)	(C)	(D)
Ø 32-38-42-48 Ø 51-60	Ø 12	69-83	45
Ø 32-38-42-48 Ø 51-60	Ø 14	81-101	50



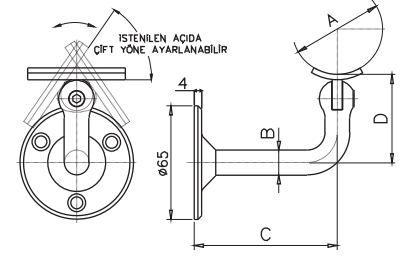
Malzeme = AISI 303-304-316

FLANŞLI DUVAR KOLÇAĞI / HR-200



Saten - Parlak

Küpeşte Çapları (A)	Kolçak Çapları (B)	(C)	(D)
Ø 32-38-42-48 Ø 51-60	Ø 12	69-83	45
Ø 32-38-42-48 Ø 51-60	Ø 14	81-101	50



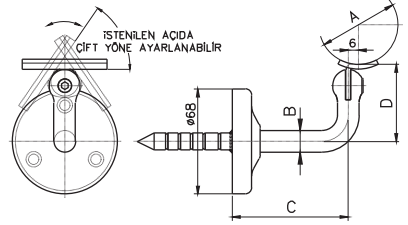
Malzeme = AISI 303-304-316

ANKRAJLI DUVAR KOLÇAĞI / HRA-300



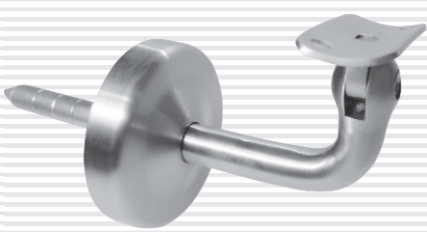
Saten - Parlak

Küpeşte Çapları (A)	Kolçak Çapları (B)	(C)	(D)
Ø 32-38-42-48 Ø 51-60	Ø 12	63-77	45
Ø 32-38-42-48 Ø 51-60	Ø 14	75-95	50



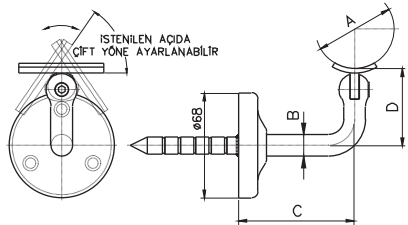
Malzeme = AISI 303-304-316

ANKRAJLI DUVAR KOLÇAĞI / HR-300

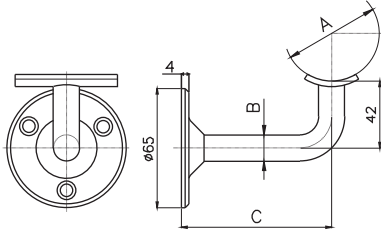


Saten - Parlak

Küpeşte Çapları (A)	Kolçak Çapları (B)	(C)	(D)
Ø 32-38-42-48 Ø 51-60	Ø 12	63-77	45
Ø 32-38-42-48 Ø 51-60	Ø 14	75-95	50



Malzeme = AISI 303-304-316

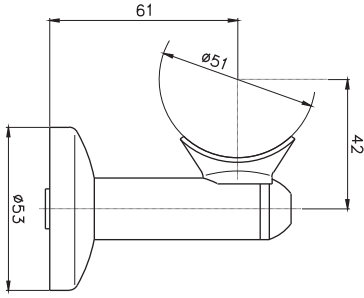
SABİT DUVAR KOLÇAĞI / HR-400


Küpeşte Çapları (A)	Kolçak Çapları (B)	(C)
Ø32-38-42-48-51-60	Ø12	64
Ø32-38-42-48-51-60	Ø14	69

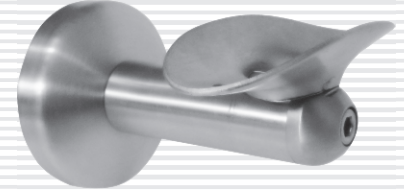
Malzeme = AISI 303-304-316



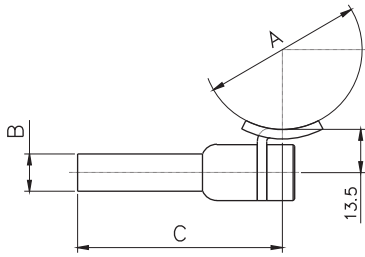
Saten - Parlak

KOLÇAK / HR-500


Malzeme = AISI 303-304-316



Saten - Parlak

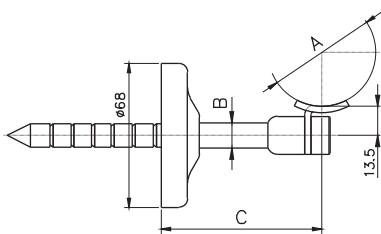
DİKME KOLÇAĞI / HRA-500


Küpeşte Çapları (A)	Kolçak Çapları (B)	(C)
Ø32-38-42-48-51-60	Ø12	65

Malzeme = AISI 303-304-316

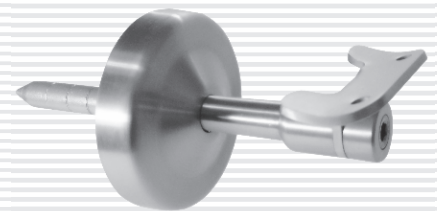


Saten - Parlak

ANKRAJLI DUVAR KOLÇAĞI / HRA-600


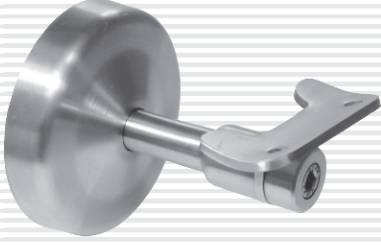
Küpeşte Çapları (A)	Kolçak Çapları (B)	(C)
Ø32-38-42-48-51-60	Ø12	75.5

Malzeme = AISI 303-304-316



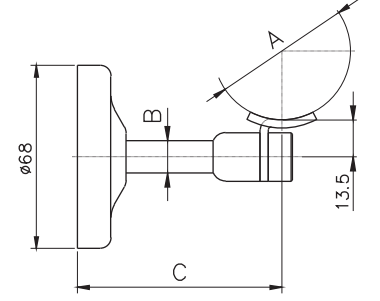
Saten - Parlak

FLANŞLI DUVAR KOLÇAĞI / HRA-700



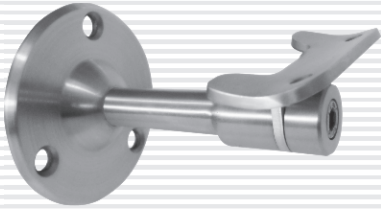
Saten - Parlak

Küpeşte Çapları (A)	Kolçak Çapları (B)	(C)
Ø 32-38-42-48-51-60	Ø 12	75.5



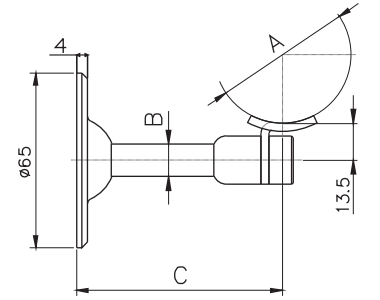
Malzeme = AISI 303-304-316

FLANŞLI DUVAR KOLÇAĞI / HRA-800



Saten - Parlak

Küpeşte Çapları (A)	Kolçak Çapları (B)	(C)
Ø 32-38-42-48-51-60	Ø 12	76

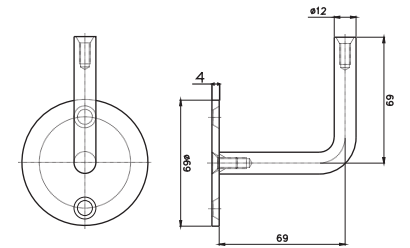


Malzeme = AISI 303-304-316

KOLÇAK / HR-800

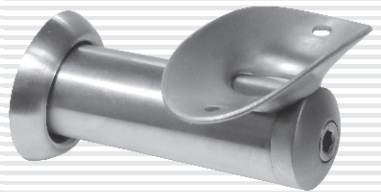


Saten - Parlak



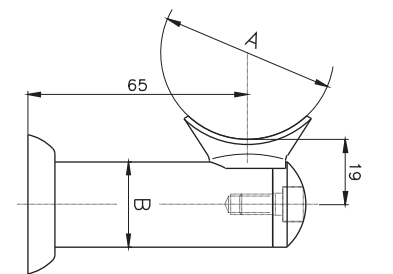
Malzeme = AISI 303-304-316

DUVAR KOLÇAĞI / HR-900

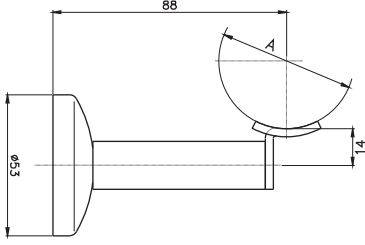


Saten - Parlak

Küpeşte Çapları (A)	Kolçak Çapları (B)
Ø 51	Ø 25



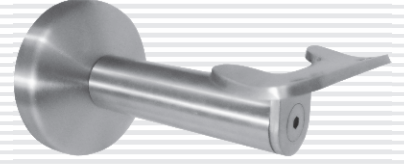
Malzeme = AISI 303-304-316

KOLÇAK / HRA-1000


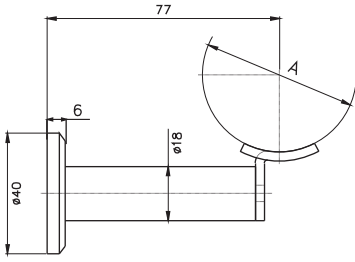
Malzeme = AISI 303-304-316

Küpeşte Çapları (A)

Ø32-38-42-48-51-60



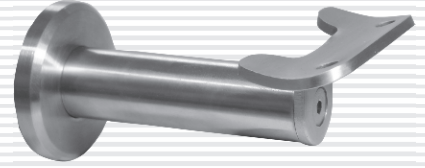
Saten - Parlak

KOLÇAK / HRA-1100


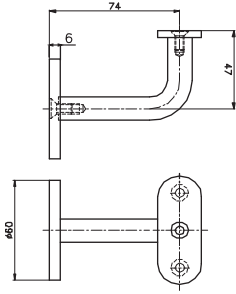
Malzeme = AISI 303-304-316

Küpeşte Çapları (A)

Ø32-38-42-48-51-60



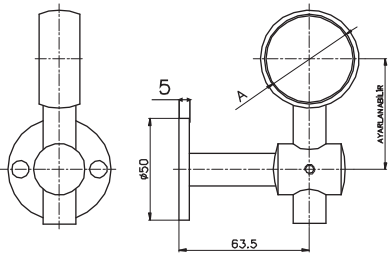
Saten - Parlak

DUVAR KOLÇAĞI / HR-1200


Malzeme = AISI 304-316



Saten - Parlak

DUVAR KOLÇAĞI / HR-1300


Malzeme = AISI 304-316

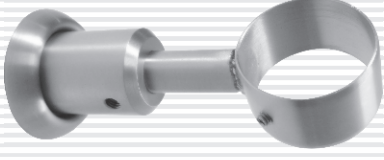
Küpeşte Çapları (A)

Ø32-38-42-48-51-60



Saten - Parlak

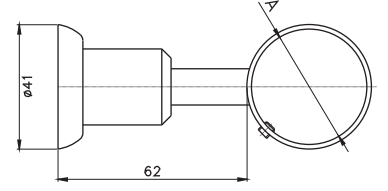
TUTAMAK DÜZ - TD



Saten - Parlak

Boru Çapları (A)

Ø 32-38-42-48-51-60



Malzeme = AISI 303-304-316

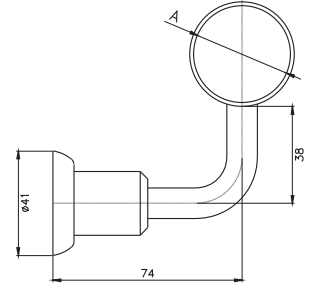
TUTAMAK AÇILI - TA



Saten - Parlak

Boru Çapları (A)

Ø 32-38-42-48-51-60



Malzeme = AISI 303-304-316

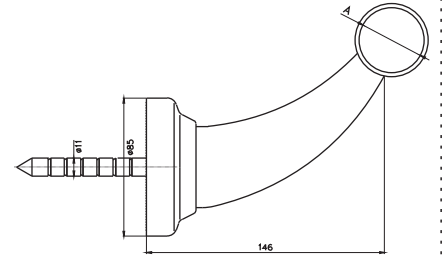
SAPLAMALI BAR TEKMELİĞİ - BTS



Saten - Parlak

Boru Çapları (A)

Ø 32-38-42-48-51-60



Malzeme = AISI 304-316

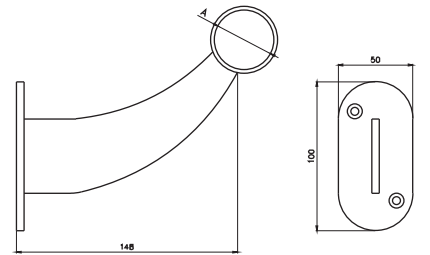
BAR TEKMELİĞİ - BT



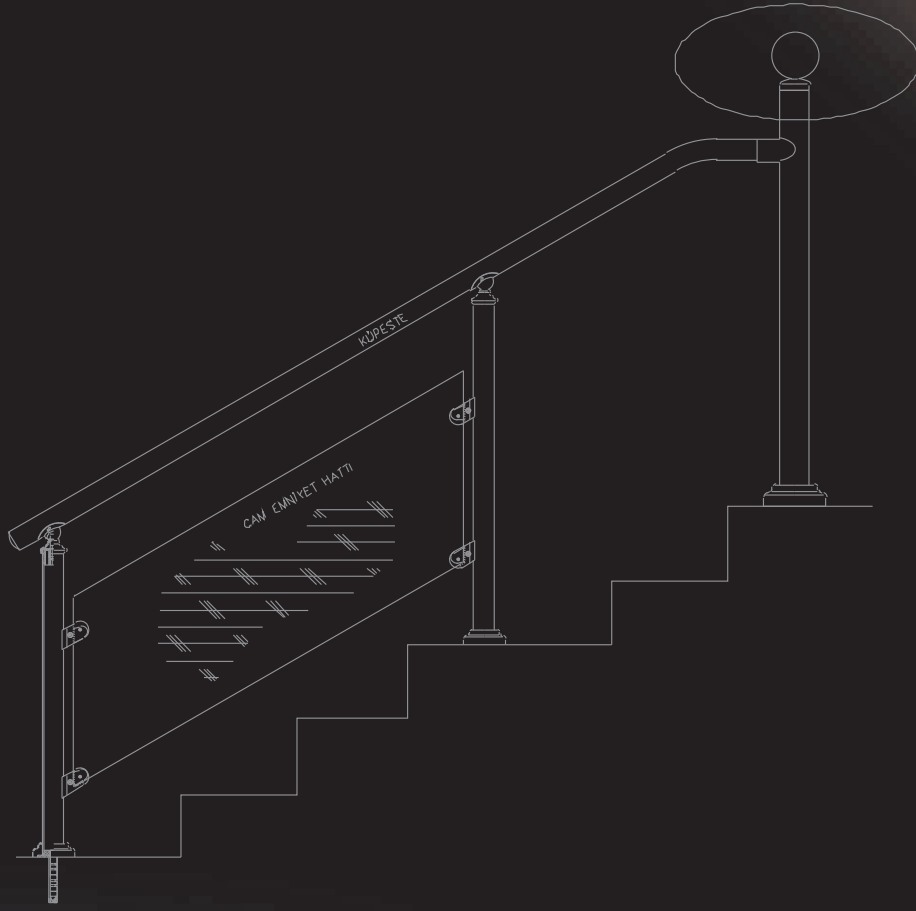
Saten - Parlak

Boru Çapları (A)

Ø 32-38-42-48-51-60



Malzeme = AISI 304-316



DİKME BABALARI VE BAĞLANTI ELEMANLARI

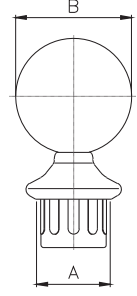
DİKME BABALARI VE BAĞLANTI ELEMANLARI

DİKME BABASI -DB



Saten - Parlak

Boru Çapları (A)	Metal Top Çapı (B)
Ø 32-38	Ø 38
Ø 32-38-42	Ø 42
Ø 38-42-51	Ø 51
Ø 51-60	Ø 60 - Ø 70
Ø 51-60-76	Ø 76
Ø 60-76	Ø 90
Ø 100	Ø 150



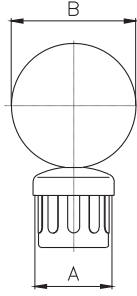
Malzeme = AISI 304-316-Plastik

DİKME BABASI / DB-100



Saten - Parlak

Boru Çapları (A)	Metal Top Çapı (B)
Ø 32-38	Ø 38
Ø 32-38-42	Ø 42
Ø 38-42-51	Ø 51
Ø 51-60	Ø 60 - Ø 70
Ø 51-60-76	Ø 76
Ø 60-76	Ø 90
Ø 100	Ø 150



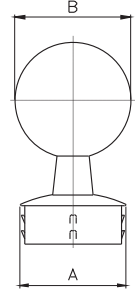
Malzeme = AISI 304-316-Plastik

DİKME BABASI / DB-200



Saten - Parlak

Boru Çapları (A)	Metal Top Çapı (B)
Ø 32-38	Ø 38
Ø 32-38-42	Ø 42
Ø 38-42-51	Ø 51
Ø 51-60	Ø 60 - Ø 70
Ø 51-60-76	Ø 76
Ø 60-76	Ø 90



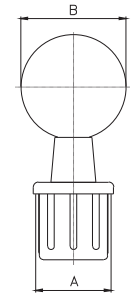
Malzeme = AISI 304-316

KARE DİKME BABASI / KDB

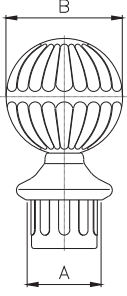


Saten - Parlak

Boru Çapları (A)	Metal Top Çapı (B)
30x30	Ø 38
30x30	Ø 42
40x40	Ø 51
40x40	Ø 60
40x40 - 50x50	Ø 70
40x40 - 50x50	Ø 76
40x40 - 50x50	Ø 90



Malzeme = AISI 304-316-Plastik

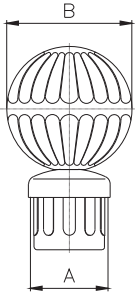
DESENLİ DİKME BABASI - DDB


Malzeme = AISI 304-316-Plastik

Boru Çapları (A)	Metal Top Çapı (B)
Ø38	Ø72
Ø42	Ø72
Ø51	Ø72
Ø60	Ø72



Saten - Parlak

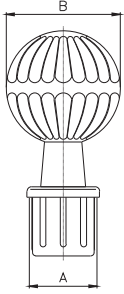
DESENLİ DİKME BABASI - DDBG


Malzeme = AISI 304-316-Plastik

Boru Çapları (A)	Metal Top Çapı (B)
Ø38	Ø72
Ø42	Ø72
Ø51	Ø72
Ø60	Ø72



Saten - Parlak

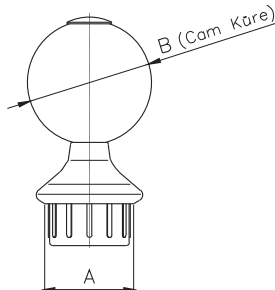
DESENLİ DİKME BABASI KARE - KDDB


Malzeme = AISI 304-316-Plastik

Profil Ölçüleri (A)	Metal Top Çapı (B)
30x30 x1.5	Ø72
40x40 x1.5	Ø72
50x50 x1.5	Ø72



Saten - Parlak

PLEKSİ DİKME BABASI - PDB


Malzeme = AISI 304-Plastik

Boru Çapları (A)	Cam Küre Çapı (B)
Ø42 x 1.5	Ø60
Ø51 x 1.5	Ø60
Ø60 x 1.5	Ø60
Ø42 x 1.5	Ø60
Ø51 x 1.5	Ø60
Ø60 x 1.5	Ø60



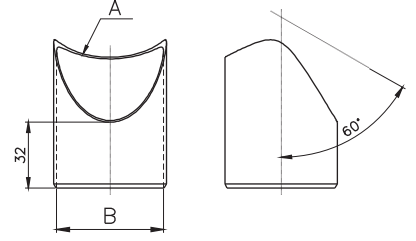
Saten - Parlak

AÇILI BABA BAĞLANTISI / ABB-01



Saten - Parlak

Baba Dikme Ölçüsü (A)	Boru Çapları (B)
Ø 32- (Kurtağzı)	Ø 32
Ø 38- (Kurtağzı)	Ø 38
Ø 42- (Kurtağzı)	Ø 42
Ø 51- (Kurtağzı)	Ø 51
Ø 60- (Kurtağzı)	Ø 51
Ø 76- (Kurtağzı)	Ø 51
Ø 60- (Kurtağzı)	Ø 60
Ø 76- (Kurtağzı)	Ø 60
Ø 90- (Kurtağzı)	Ø 60



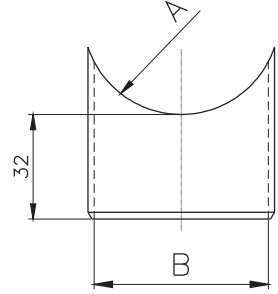
Malzeme = AISI 304

DÜZ BABA BAĞLANTISI / DBB-01

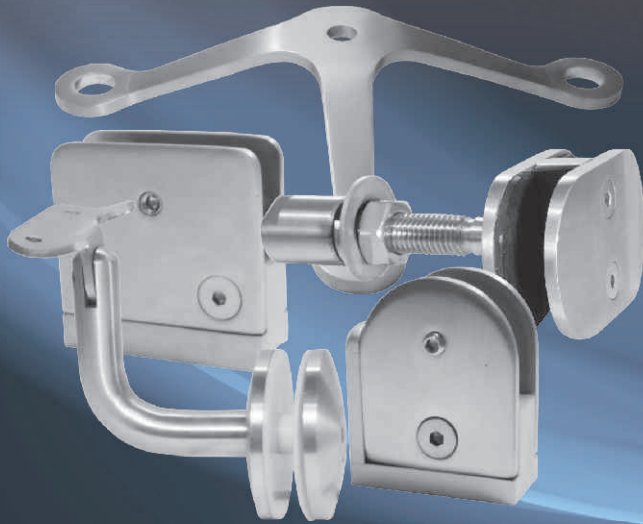
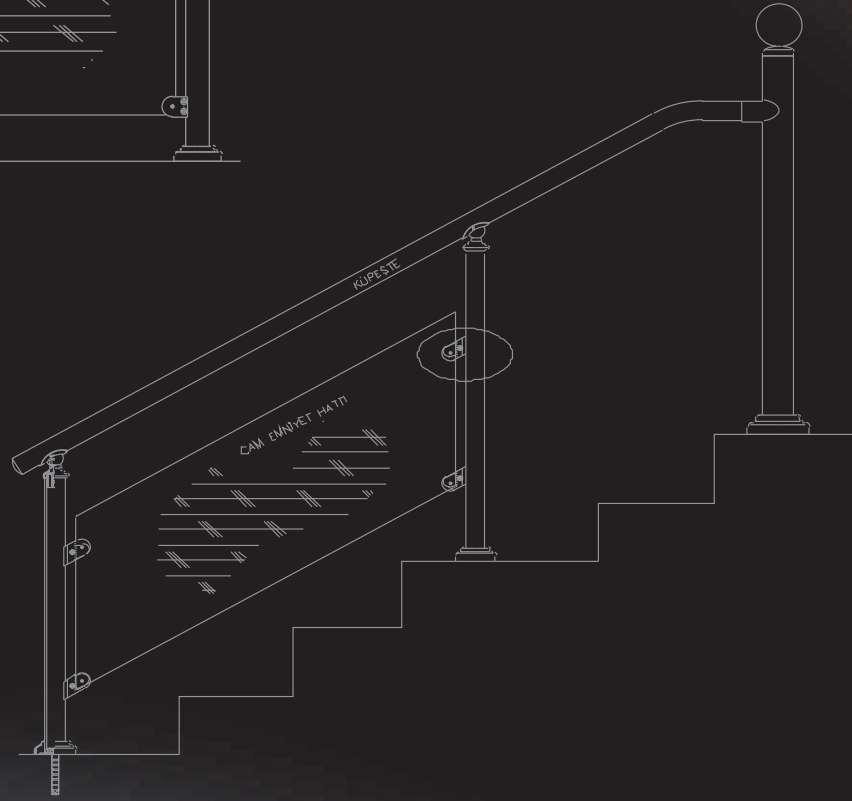
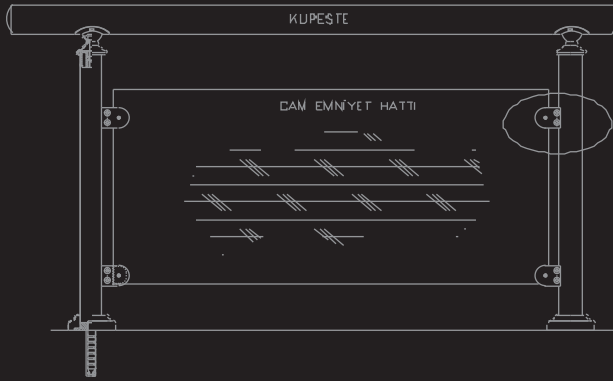


Saten - Parlak

Baba Dikme Ölçüsü (A)	Boru Çapları (B)
Ø 32- (Kurtağzı)	Ø 32
Ø 38- (Kurtağzı)	Ø 38
Ø 42- (Kurtağzı)	Ø 42
Ø 51- (Kurtağzı)	Ø 51
Ø 60- (Kurtağzı)	Ø 51
Ø 76- (Kurtağzı)	Ø 51
Ø 60- (Kurtağzı)	Ø 60
Ø 76- (Kurtağzı)	Ø 60
Ø 90- (Kurtağzı)	Ø 60



Malzeme = AISI 304



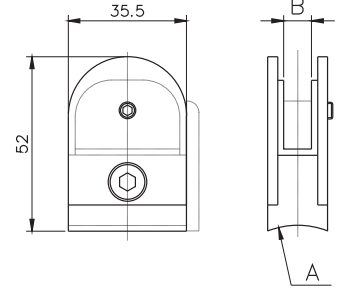
CAM TUTUCULARI VE BAĞLANTI AKSESUARLARI



Saten - Parlak

CAM TUTUCU (8-10 mm Cama) / CK-100

Dikme Kurtağızı ölçüleri (A)	Cam Ölçüsü (B)
Ø32-38-42-51-60	8-10 mm.



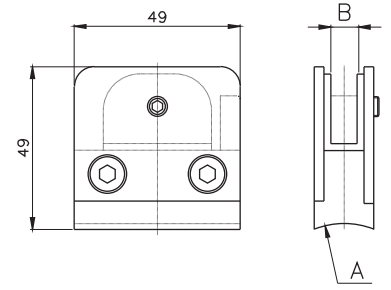
Malzeme = AISI 304-PLASTİK



Saten - Parlak

CAM TUTUCU (8-10 mm Cama) / CK-200

Dikme Kurtağızı ölçüleri (A)	Cam Ölçüsü (B)
Ø32-38-42-51-60	8-10 mm.



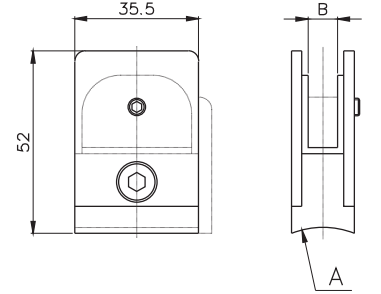
Malzeme = AISI 304-PLASTİK



Saten - Parlak

CAM TUTUCU (8-10 mm Cama) / CK-300

Dikme Kurtağızı ölçüleri (A)	Cam Ölçüsü (B)
Ø32-38-42-51-60	8-10 mm.



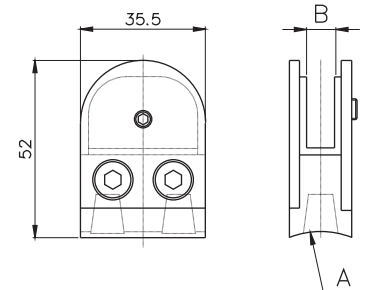
Malzeme = AISI 304-PLASTİK



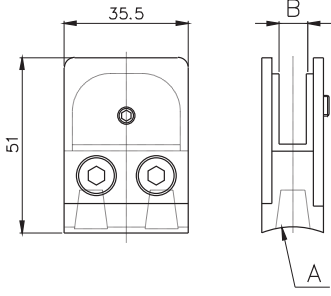
Saten - Parlak

OVAL CAM TUTUCU (8-10 mm Cama) / DCK-200

Dikme Kurtağızı ölçüleri (A)	Cam Ölçüsü (B)
Ø32-38-42-51-60	8-10 mm.



Malzeme = AISI 304-316

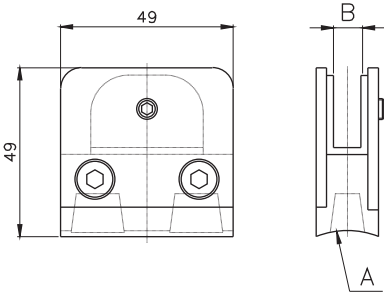
DÜZ CAM TUTUCU (8-10 mm Cama) / DCK-300


Dikme Kurtağı ölçüleri (A)	Cam Ölçüsü (B)
Ø32-38-42-51-60	8-10 mm.

Malzeme = AISI 304-316



Saten - Parlak

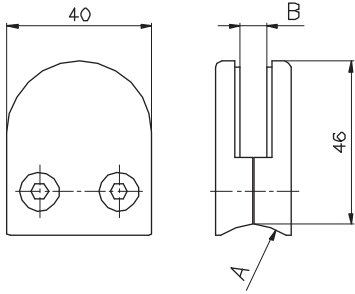
49x49 CAM TUTUCU (8-10 mm Cama) / DCK-400


Dikme Kurtağı ölçüleri (A)	Cam Ölçüsü (B)
Ø32-38-42-51-60	8-10 mm.

Malzeme = AISI 304-316

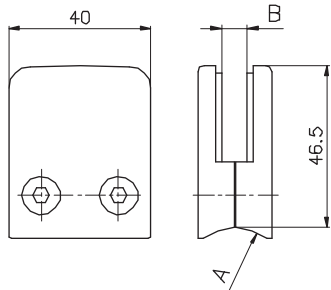


Saten - Parlak

OVAL CAM TUTUCU (8 mm Cama) / DCK-600


Dikme Kurtağı ölçüleri (A)	Cam Ölçüsü (B)
Ø32-38-42-51-60	8-10 mm.

Malzeme = AISI 304-316


50x40 CAM TUTUCU (8 mm Cama) / DCK-700


Dikme Kurtağı ölçüleri (A)	Cam Ölçüsü (B)
Ø32-38-42-51-60	8-10 mm.

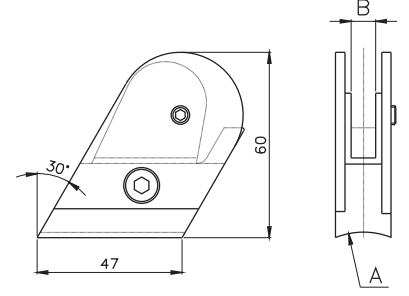
Malzeme = AISI 304-316



AÇILI CAM TUTUCU (8 mm Cama) / ACK-100


Saten - Parlak

Dikme Kurtağzı ölçüleri (A)	Cam Ölçüsü (B)
Ø32-38-42-51-60	8 mm.

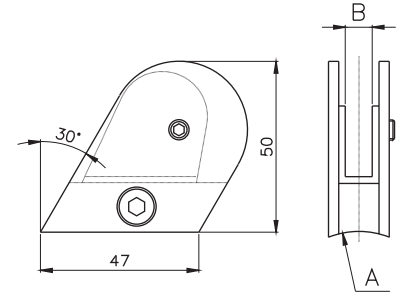


Malzeme = AISI 304-PLASTİK

AÇILI CAM TUTUCU(8 mm Cama) / DACK-500


Saten - Parlak

Dikme Kurtağzı ölçüleri (A)	Cam Ölçüsü (B)
Ø32-38-42-51-60	8 mm.

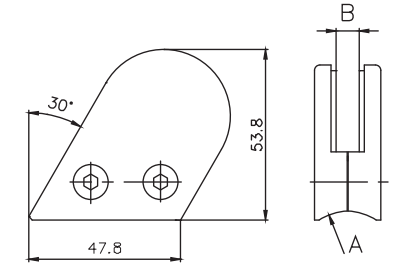


Malzeme = AISI 304-316

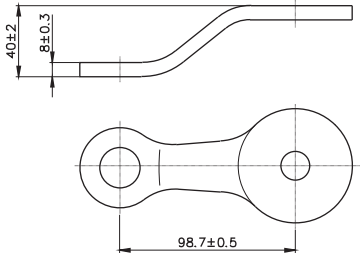
AÇILI CAM TUTUCU(8 mm Cama) / DACK-800


Saten - Parlak

Dikme Kurtağzı ölçüleri (A)	Cam Ölçüsü (B)
Ø32-38-42-51-60	8 mm.



Malzeme = AISI 304-316

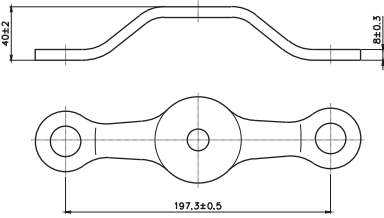
SPIDER 1'Lİ / SPT-1


Malzeme = AISI 304-316

Kalınlık = 8 mm.



Saten - Parlak

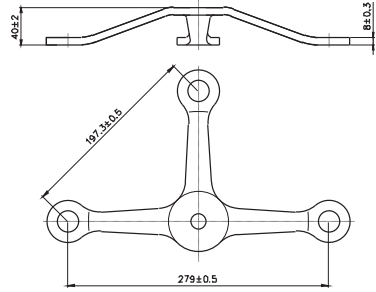
SPIDER 2'Lİ / SPT-2


Malzeme = AISI 304-316

Kalınlık = 8 mm.



Saten - Parlak

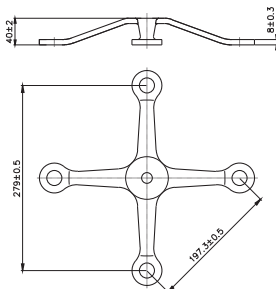
SPIDER 3'LÜ / SPT-3


Malzeme = AISI 304-316

Kalınlık = 8 mm.



Saten - Parlak

SPIDER 4'LÜ / SPT-4


Malzeme = AISI 304-316

Kalınlık = 8 mm.

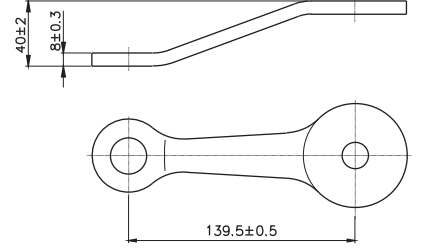


Saten - Parlak

SPIDER 1'Lİ UZUN / SPT-U1



Saten - Parlak



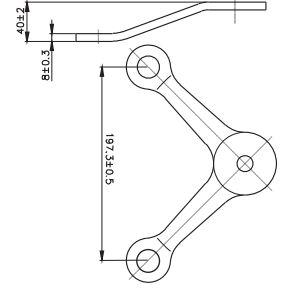
Malzeme = AISI 304-316

Kalınlık = 8 mm.

SPIDER 2'Lİ V / SPT-V



Saten - Parlak



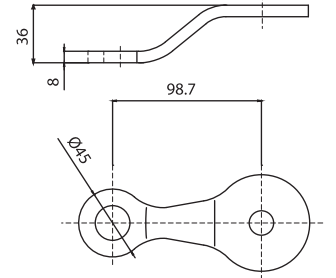
Malzeme = AISI 304-316

Kalınlık = 8 mm.

A TİPİ SPIDER 1'Lİ UZUN / SPTA-U1



Saten - Parlak



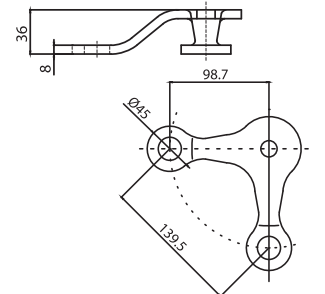
Malzeme = AISI 304-316

Kalınlık = 8 mm.

A TİPİ SPIDER 2'Lİ V / SPTA-V



Saten - Parlak

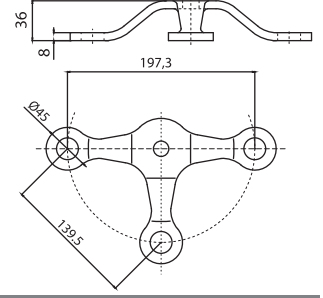


Malzeme = AISI 304-316

Kalınlık = 8 mm.

A TİPİ SPIDER 3'LÜ / SPTA-3


Saten - Parlak

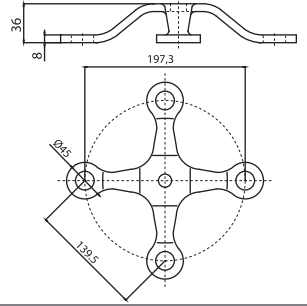


Malzeme = AISI 304-316

Kalınlık = 8 mm.

A TİPİ SPIDER 4'LÜ / SPTA-4


Saten - Parlak

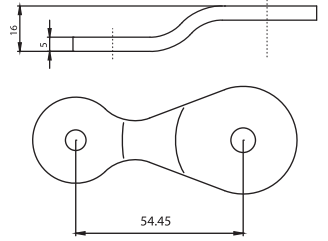


Malzeme = AISI 304-316

Kalınlık = 8 mm.

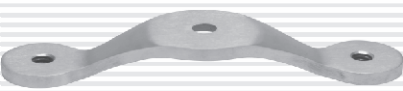
B TİPİ SPIDER 1'Lİ / SPTB-1


Saten - Parlak

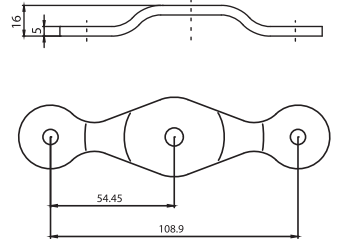


Malzeme = AISI 304-316

Kalınlık = 5 mm.

B TİPİ SPIDER 2'Lİ / SPTB-2


Saten - Parlak



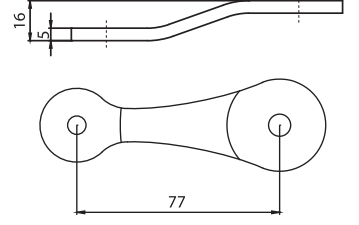
Malzeme = AISI 304-316

Kalınlık = 5 mm.

B TİPİ SPIDER 1'Lİ UZUN / SPTB-U1



Saten - Parlak



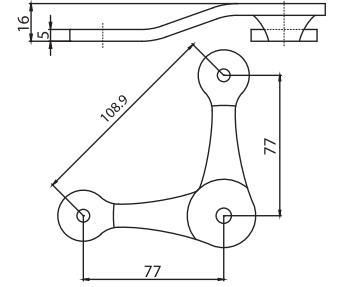
Malzeme = AISI 304-316

Kalınlık = 5 mm.

B TİPİ SPIDER 2'Lİ V / SPTB-V



Saten - Parlak



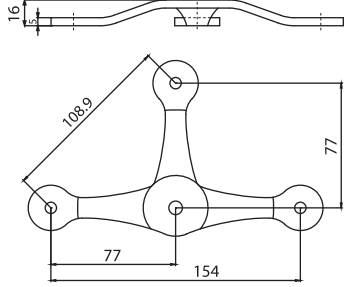
Malzeme = AISI 304-316

Kalınlık = 5 mm.

B TİPİ SPIDER 3'LÜ / SPTB-3



Saten - Parlak



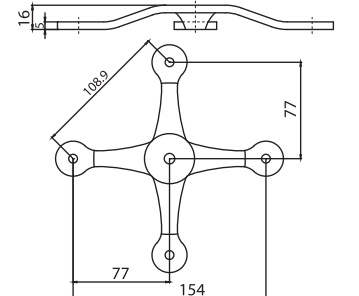
Malzeme = AISI 304-316

Kalınlık = 5 mm.

B TİPİ SPIDER 4'LÜ / SPTB-4

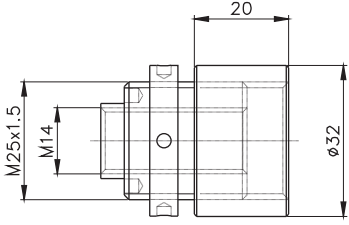


Saten - Parlak



Malzeme = AISI 304-316

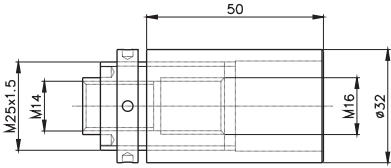
Kalınlık = 5 mm.

SPIDER KONEKTÖRÜ / 32x20 (10 mm AYARLI)


Malzeme = AISI 304-316



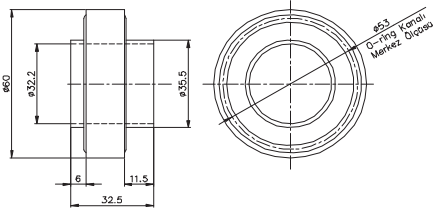
Saten - Parlak

SPIDER KONEKTÖRÜ / 32x50 (30 mm AYARLI)


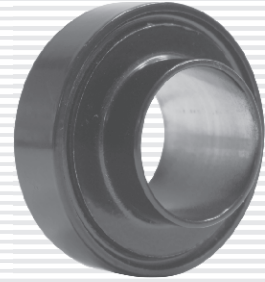
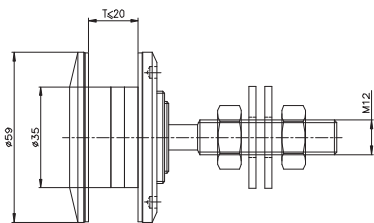
Malzeme = AISI 304-316



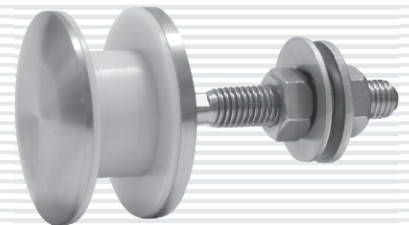
Saten - Parlak

ISICAM ROTİL APARATI


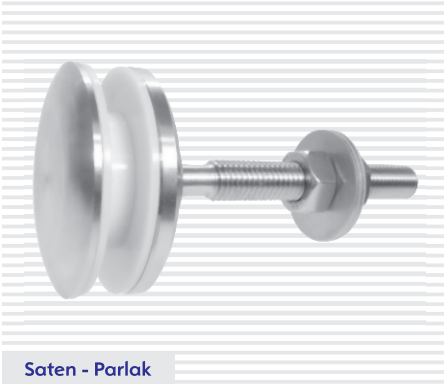
Malzeme = Alüminyum - Teflon


ISICAM ROTİLİ


Malzeme = AISI 304-316

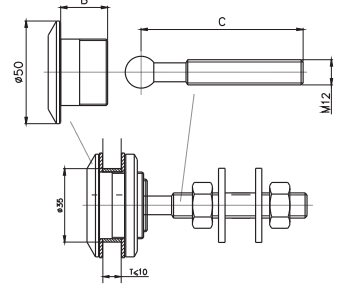


Saten - Parlak

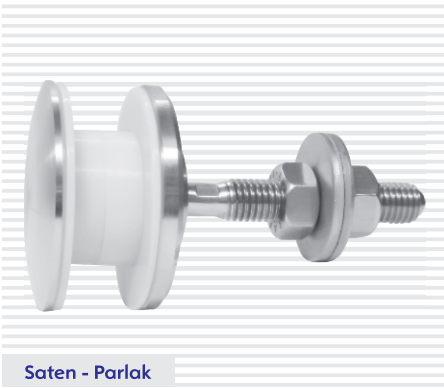
SPIDER ROTİL Ø50 / SPR-50


Saten - Parlak

Rotil Pul Çapı	(B)	(C) mm.
Ø50	21-32	77.5 - 104.5

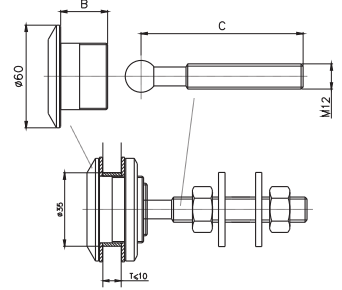


Malzeme = AISI 303-304-316

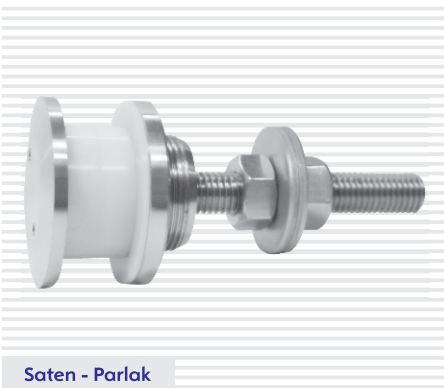
SPIDER ROTİL Ø60 / SPR-60


Saten - Parlak

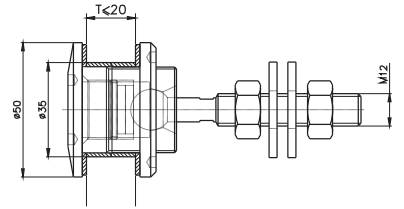
Rotil Pul Çapı	(B)	(C) mm.
Ø60	21-32	77.5 - 104.5



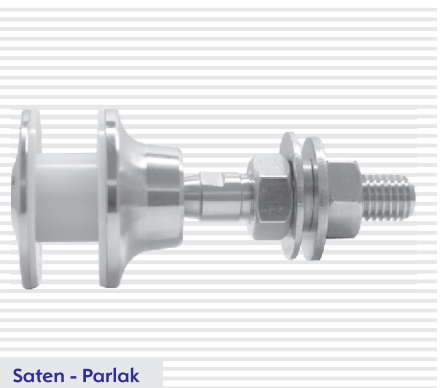
Malzeme = AISI 303-304-316

SPIDER ROTİL ÖNDEN SIKMALI / SPRO-50


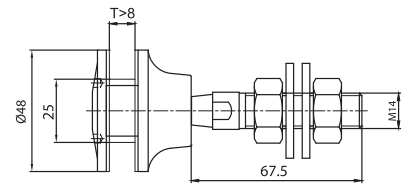
Saten - Parlak



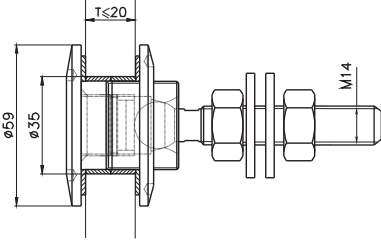
Malzeme = AISI 303-304-316

SPIDER ROTİL ÖNDEN SIKMALI / SPRO-50B


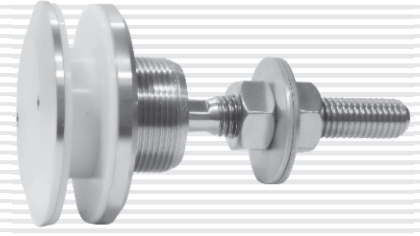
Saten - Parlak



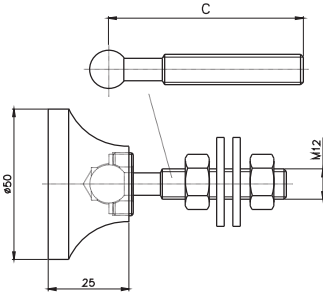
Malzeme = AISI 303-304-316

SPIDER ROTİL ÖNDEN SIKMALI / SPRO-60


Malzeme = AISI 303-304-316



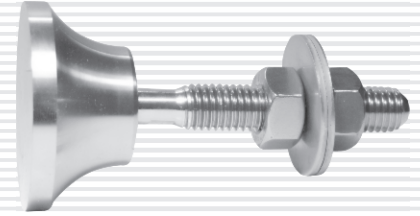
Saten - Parlak

SPIDER ROTİL YAPIŞTIRMALI Ø50 / SPRY-50


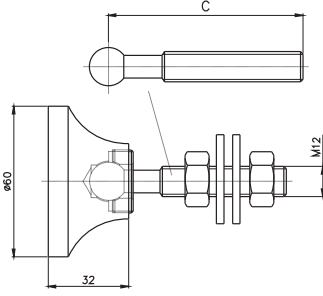
Malzeme = AISI 303-304-316

(C) mm.

47.5 - 77.5



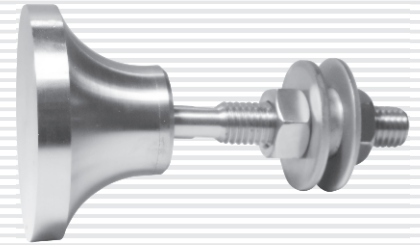
Saten - Parlak

SPIDER ROTİL YAPIŞTIRMALI Ø60 / SPRY-60


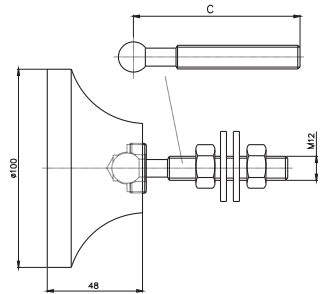
Malzeme = AISI 303-304-316

(C) mm.

77.5 - 104.5



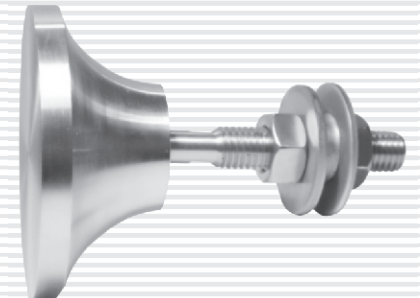
Saten - Parlak

SPIDER ROTİL YAPIŞTIRMALI Ø100 / SPRY-100


Malzeme = AISI 303-304-316

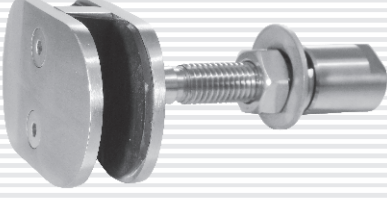
(C) mm.

77.5 - 104.5

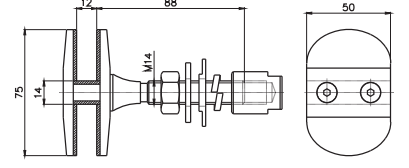


Saten - Parlak

CAM TUTUCU ROTİL ÇİFT TARAFLI / SPR-C

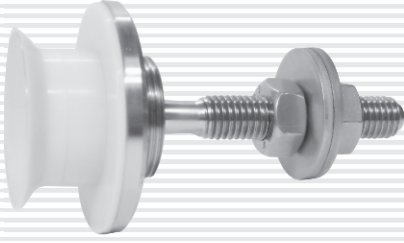


Saten - Parlak



Malzeme = AISI 303-304-316

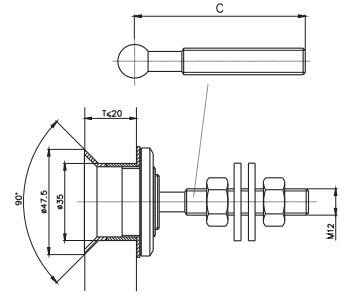
SPIDER ROTİL KONİK GÖVDELİ / SPR-K



Saten - Parlak

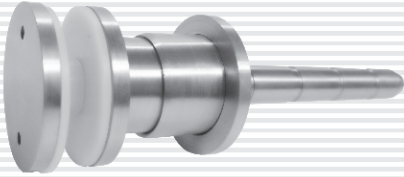
(C) mm.

77.5 - 104.5

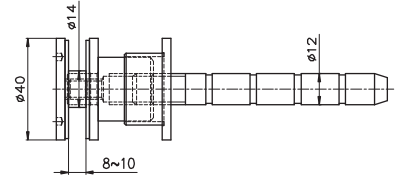


Malzeme = AISI 303-304-316

CAM TUTUCU AYARLI SAPLAMALI ANKRAJ

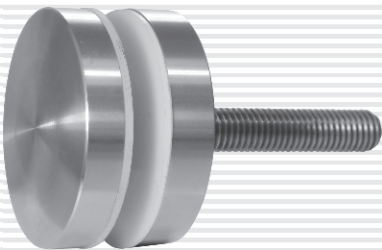


Saten - Parlak

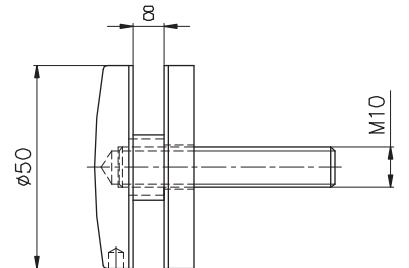


Malzeme = AISI 304

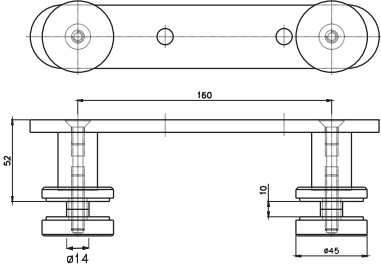
CAM TUTUCU SAPLAMALI ANKRAJ



Saten - Parlak



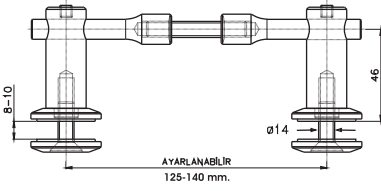
Malzeme = AISI 303-304-316

CAM TUTUCU / CTS-010 (DİKME İÇİN)


Malzeme = AISI 304



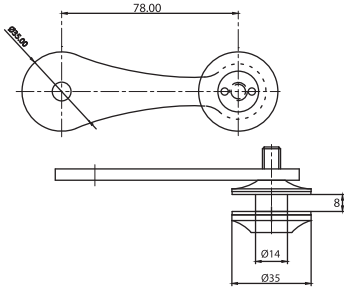
Saten - Parlak

CAM TUTUCU / CTS-015 (DİKME İÇİN)


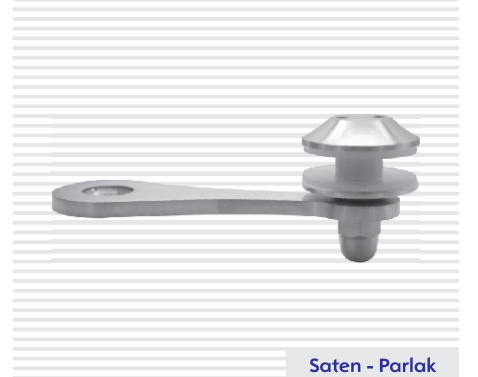
Malzeme = AISI 304-316



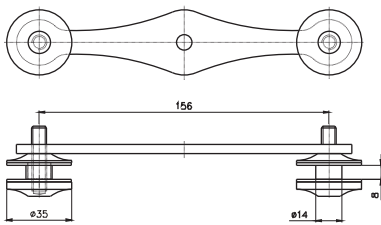
Saten - Parlak

CAM TUTUCU 1'Lİ / CTS-020 (BİRLİ)


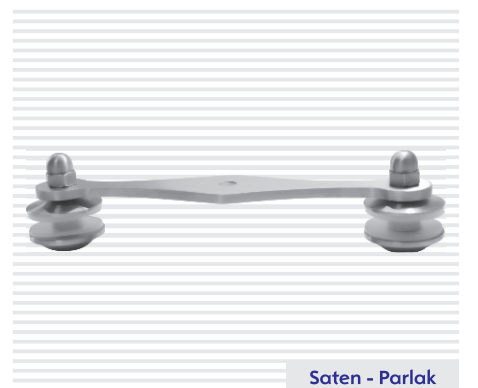
Malzeme = AISI 304-316



Saten - Parlak

CAM TUTUCU 2'Lİ / CTS-020 (İKİLİ)


Malzeme = AISI 304-316



Saten - Parlak

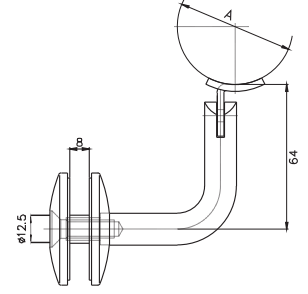
CAM TUTUCU KOLÇAK / CTK-010



Saten - Parlak

Küpeşte Çapları (A)

Ø 32-38-42-48-51-60



Malzeme = AISI 304-316

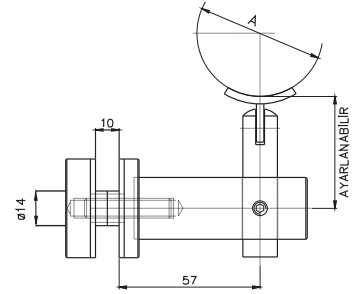
CAM TUTUCU KOLÇAK / CTK-015



Saten - Parlak

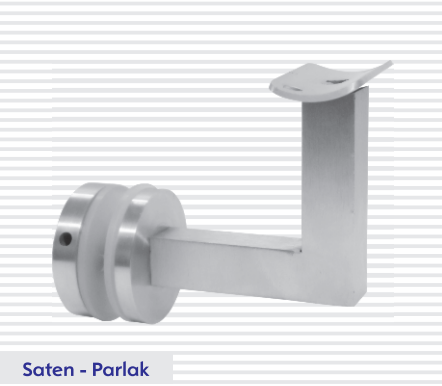
Küpeşte Çapları (A)

Ø 32-38-42-48-51-60



Malzeme = AISI 304-316

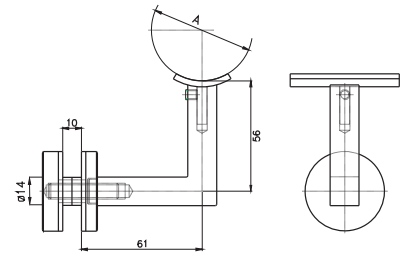
CAM TUTUCU KOLÇAK / CTK-020



Saten - Parlak

Küpeşte Çapları (A)

Ø 32-38-42-48-51-60

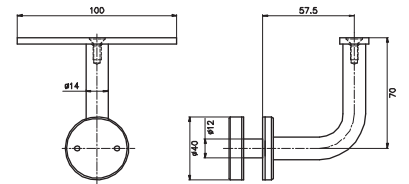


Malzeme = AISI 304-316

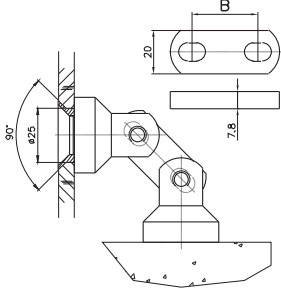
CAM TUTUCU KOLÇAK / CTK-025



Saten - Parlak



Malzeme = AISI 304-316

CAM DUVAR KÖŞE BAĞLANTI APARATI - 001


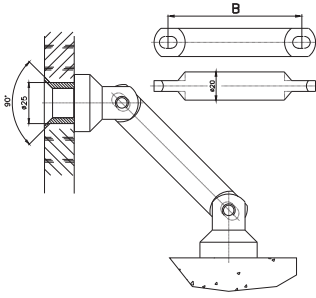
(B) mm.

30 - 55 - 90 - 105

Malzeme = AISI 304-316



Saten - Parlak

CAM DUVAR KÖŞE BAĞLANTI APARATI - 003


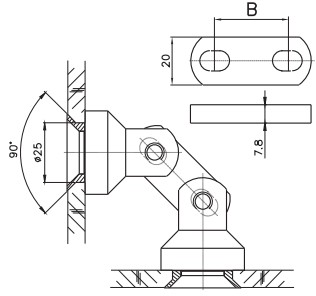
(B) mm.

60 - 65 - 72 - 94 - 115

Malzeme = AISI 304-316



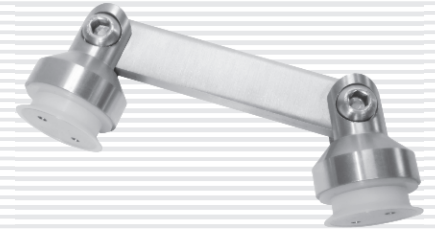
Saten - Parlak

CAM CAMA KÖŞE BAĞLANTI APARATI - 001


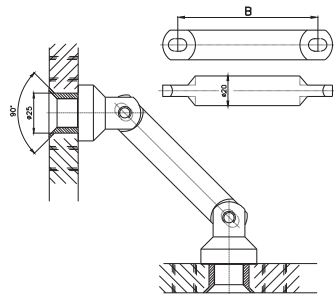
(B) mm.

30 - 55 - 90 - 105

Malzeme = AISI 304-316



Saten - Parlak

CAM CAMA KÖŞE BAĞLANTI APARATI - 003


(B) mm.

60 - 65 - 72 - 94 - 115

Malzeme = AISI 304-316

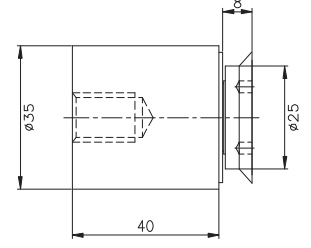


Saten - Parlak

CAM DUVAR BAĞLANTI APARATI - 001



Saten - Parlak

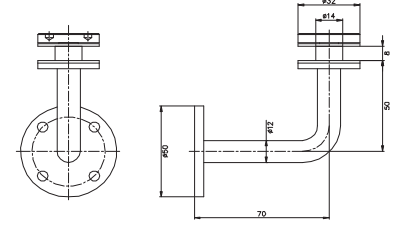


Malzeme = AISI 304-316

CAM DUVAR BAĞLANTI APARATI - 002

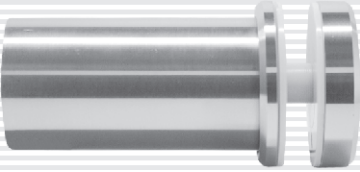


Saten - Parlak

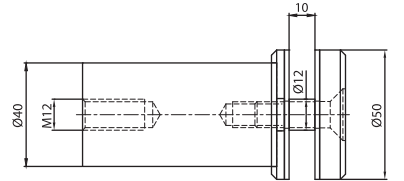


Malzeme = AISI 304-316

CAM DUVAR BAĞLANTI APARATI - 003



Saten - Parlak



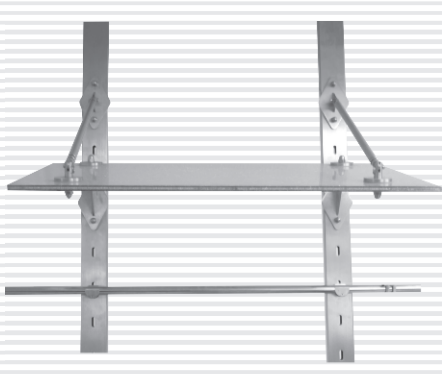
Not: İstenilen ölçülerde üretilebilir.

Malzeme = AISI 304-316

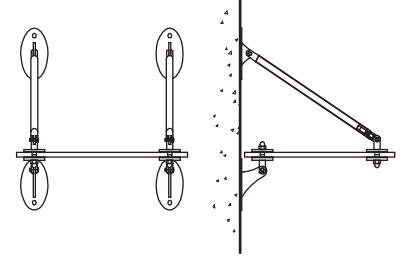


**CUBICLE BAĞLANTI SİSTEMLERİ
MENTEŞELER - KAPI STOPERLERİ
HALAT GERDİRME - ENGELLİ TUTAMAKLARI**

**CUBICLE BAĞLANTI SİSTEMLERİ - ENGELLİ TUTAMAKLARI
MENTEŞELER - KAPI STOPERLERİ - HALAT GERDİRME**



KAPI GİRİŞ ÜSTÜ (CAM) HALAT GİRDİRME SİSTEMİ



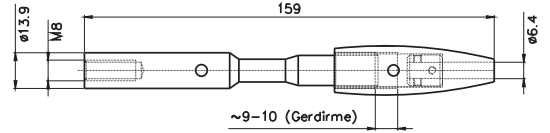
Not: Ayrıca İstenen Ölçülerde Sipariş Yapılabilir.

Malzeme = AISI 304

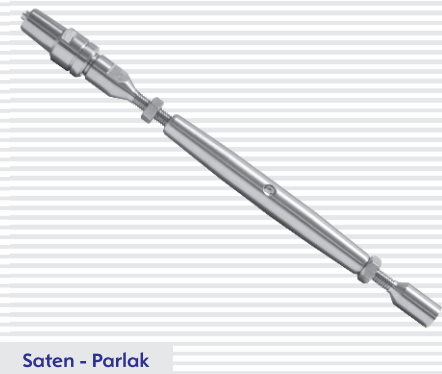


Saten - Parlak

HALAT GİRDİRME APARATI / HG-01



Malzeme = AISI 304-316



Saten - Parlak

HALAT GİRDİRME APARATI / HG-02

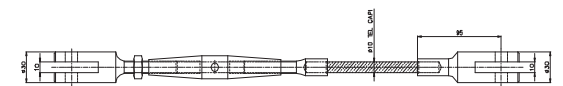


Malzeme = AISI 304-316

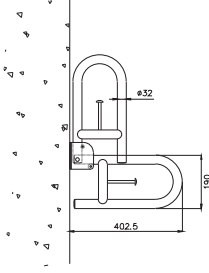


Saten - Parlak

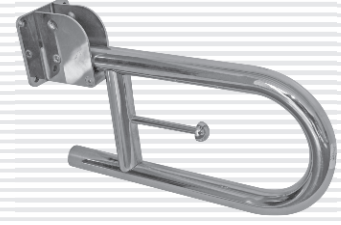
HALAT GİRDİRME APARATI / HG-03



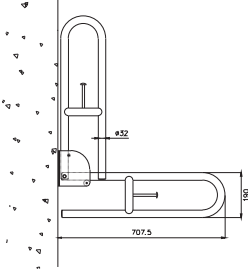
Malzeme = AISI 304-316

ENGELLİ TUVALET TUTAMAĞI HAREKETLİ KISA


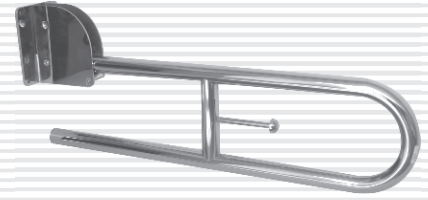
Malzeme = AISI 304



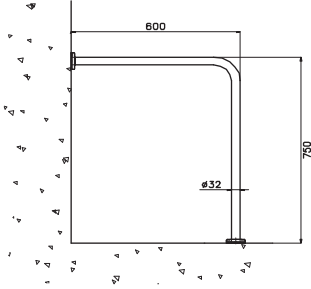
Saten - Parlak

ENGELLİ TUVALET TUTAMAĞI HAREKETLİ UZUN


Malzeme = AISI 304



Saten - Parlak

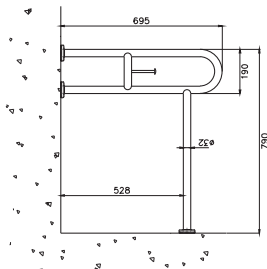
ENGELLİ TUVALET TUTAMAĞI SABİT - L1


Malzeme = AISI 304

Kalınlık = 1 mm.



Saten - Parlak

ENGELLİ TUVALET TUTAMAĞI SABİT - L2


Malzeme = AISI 304



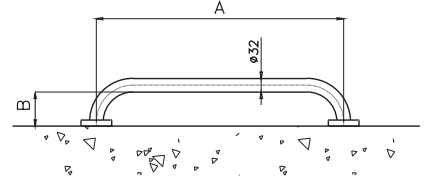
Saten - Parlak

ENGELLİ TUVALET TUTAMAĞI DÜZ

(A) mm.	(B) mm.
580	80
260	60



Saten - Parlak

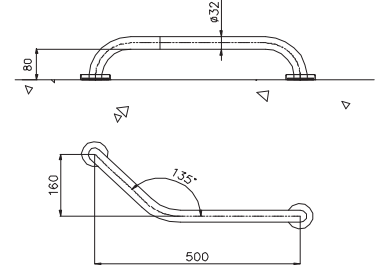


Malzeme = AISI 304

ENGELLİ TUVALET TUTAMAĞI AÇILI



Saten - Parlak

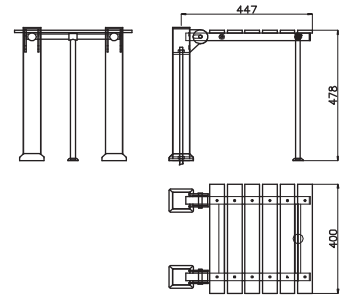


Malzeme = AISI 304

ENGELLİ BANYO OTURAĞI PASLANMAZ



Saten - Parlak

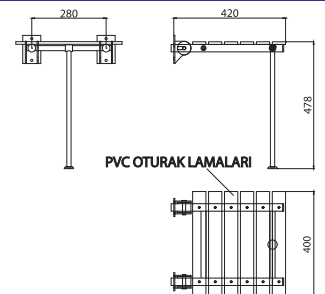


Malzeme = AISI 304

ENGELLİ BANYO OTURAĞI DUVAR TİPİ

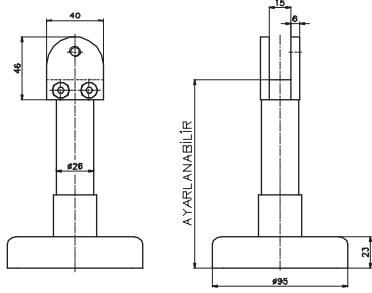


Saten - Parlak



Malzeme = İskelet: AISI 304 - Oturak: PVC

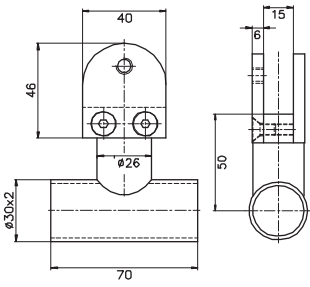
CUBICLE BAĞLANTI SİSTEMLERİ - 1



Malzeme = AISI 304-316



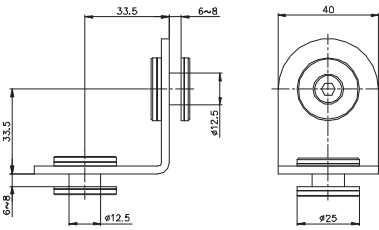
CUBICLE BAĞLANTI SİSTEMLERİ - 2



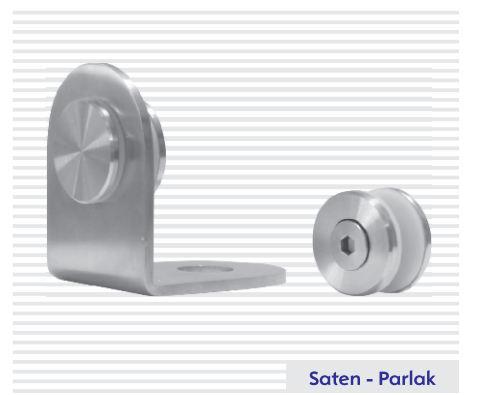
Malzeme = AISI 304-316



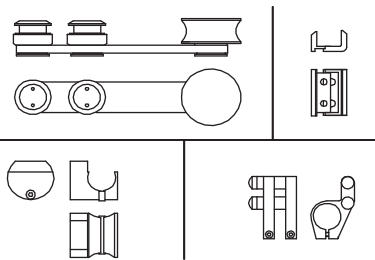
CUBICLE BAĞLANTI SİSTEMLERİ - 3



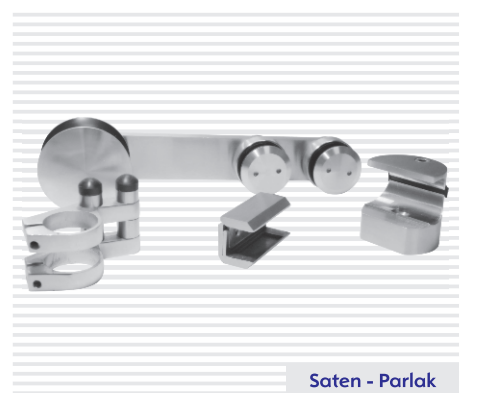
Malzeme = AISI 304-316

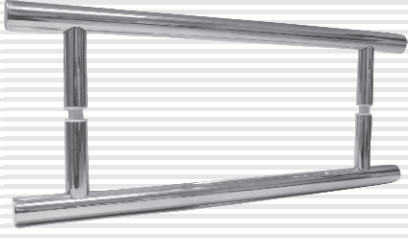


KAYAR KAPI MEKANİZMASI TAKIM



Malzeme = AISI 304



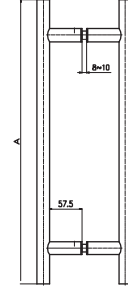


Saten - Parlak

CAM KAPI KOLU

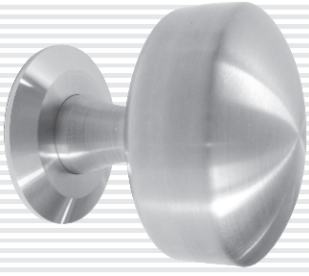
(A) Kapı Kolu Boyu (mm.)

300 - 400 - 500 - 800 - 1000



Malzeme = AISI 304

Not: İstenilen Ölçülerde Üretim Yapılabilir.

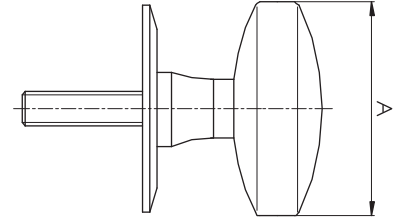


Saten - Parlak

KAPI TOKMAĞI

Kapı Tokmağı ölçüleri (A)

Ø38-42-48-51-60-70

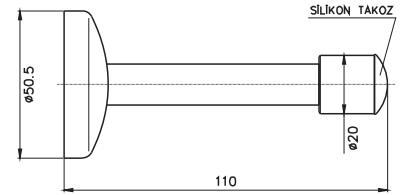


Malzeme = AISI 304-316



Saten - Parlak

KAPI STOPERİ / KS-01

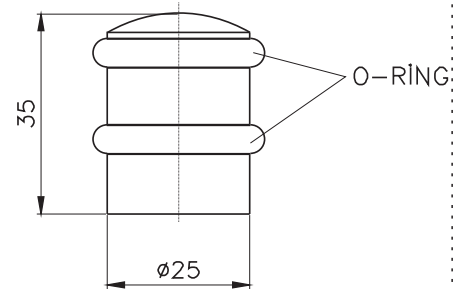


Malzeme = AISI 304



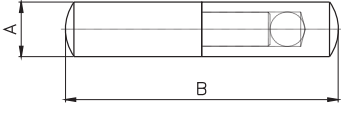
Saten - Parlak

KAPI STOPERİ / KS-02



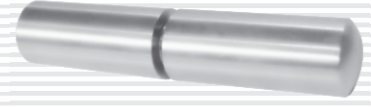
Malzeme = AISI 304

MİL MENTEŞE



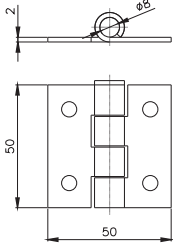
Menteşe Mil Çapları (A)	(B) mm.
Ø10	60
Ø12	70
Ø14	80
Ø16	100
Ø18	100

Malzeme = AISI 304-316



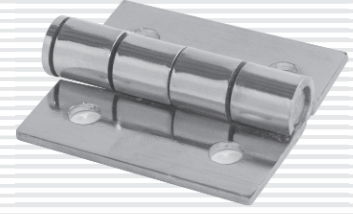
Saten - Parlak

ÖZEL MENTEŞE 50x50



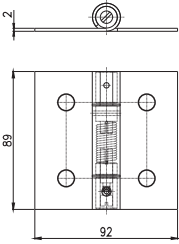
Malzeme = AISI 304-316

Kalınlık = 2 mm.



Saten - Parlak

ÖZEL YAYLI MENTEŞE



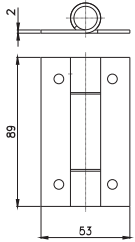
Malzeme = AISI 304-316

Kalınlık = 2 mm.



Saten - Parlak

ÖZEL MENTEŞE 53x89



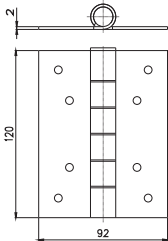
Malzeme = AISI 304-316

Kalınlık = 2 mm.



Saten - Parlak

ÖZEL MENTEŞE 120X92



Malzeme = AISI 304-316

Kalınlık = 2 mm.

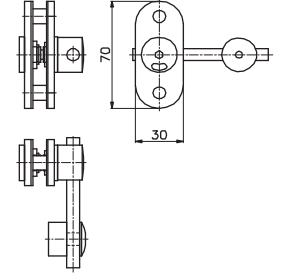


Saten - Parlak



Saten - Parlak

WC KAPI KİLİTİ - 01

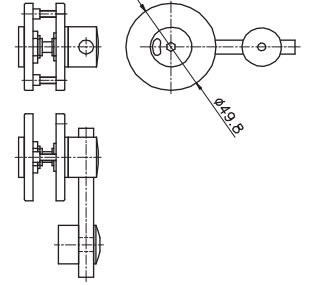


Malzeme = AISI 304-316

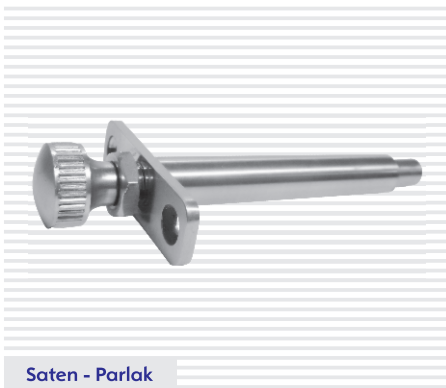


Saten - Parlak

WC KAPI KİLİTİ - 02

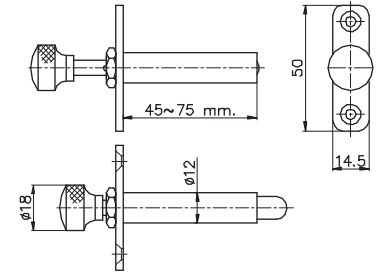


Malzeme = AISI 304-316

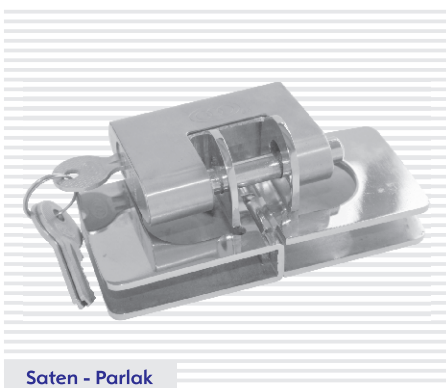


Saten - Parlak

ÇOCUK KİLİTİ

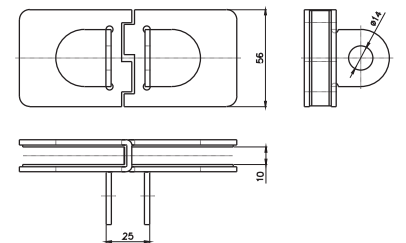


Malzeme = AISI 304-316



Saten - Parlak

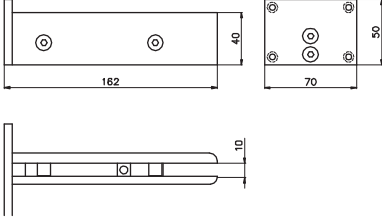
CAM KAPI KİLİT MEKANİZMASI



Not: Kilit Hariç Üretilmektedir.

Malzeme = AISI 304-316

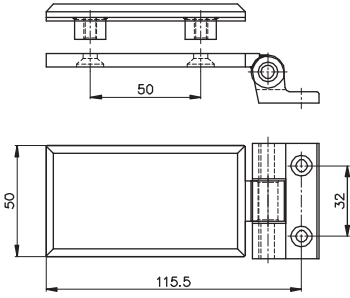
CAM KAPI BAĞLAMA APARATI



Malzeme = AISI 304



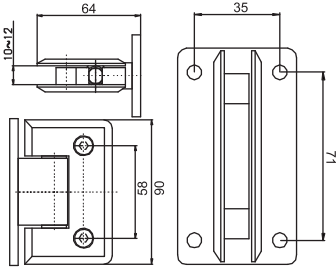
CAM KAPI MENTEŞESİ - 01



Malzeme = AISI 304



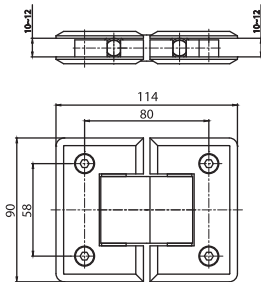
CAM DUVAR PARADUŞ MENTEŞESİ - 01



Malzeme = AISI 304-316



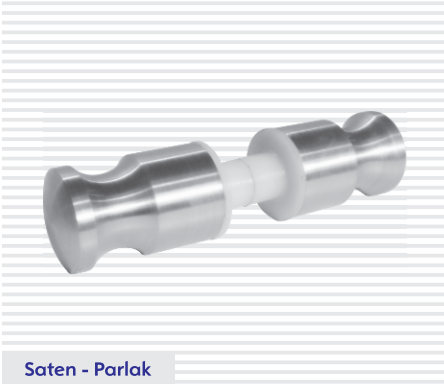
CAM CAMA PARADUŞ MENTEŞESİ - 01



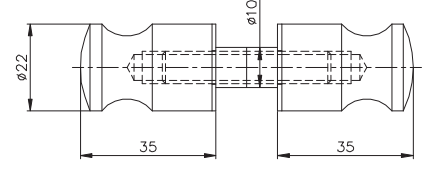
Malzeme = AISI 304-316



PARADUŐ KULBU



Saten - Parlak

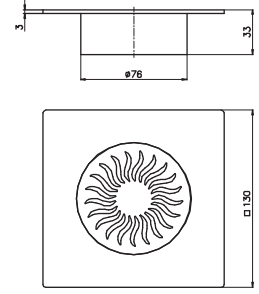


Malzeme = AISI 304-316

BANYO GİDER KAPAĐI

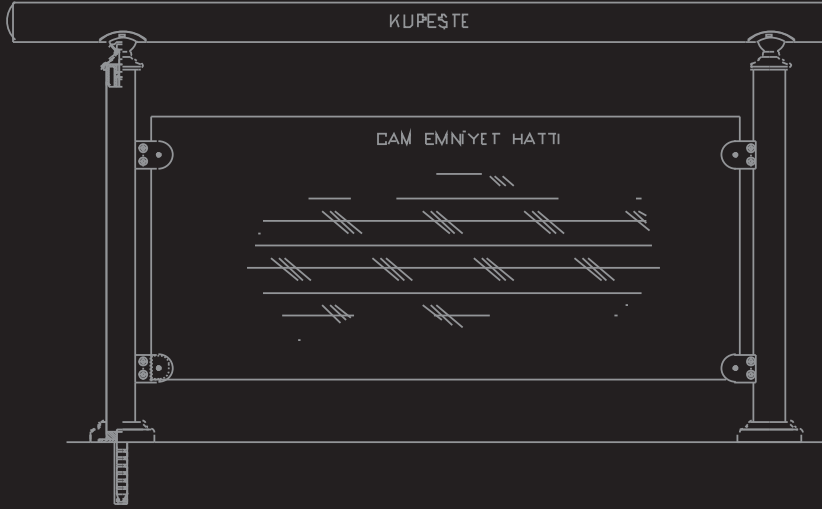


Saten - Parlak



Malzeme = AISI 304-316

ÖZEL DEKORATİF DİKMELER - HIRDAVAT GRUBU
BAYRAK DİREĞİ VE AKSESUARLARI



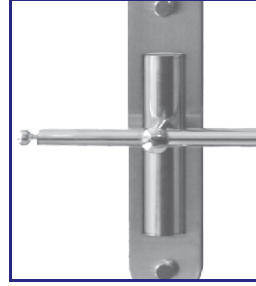
ÖZEL DEKORATİF DİKMELER
BAYRAK DİREĞİ VE AKSESUARLARI
HIRDAVAT GRUBU

ÖZEL DEKORATİF DİKME - 01



Malzeme = AISI 304

Saten - Parlak



ÖZEL DEKORATİF DİKME - 02

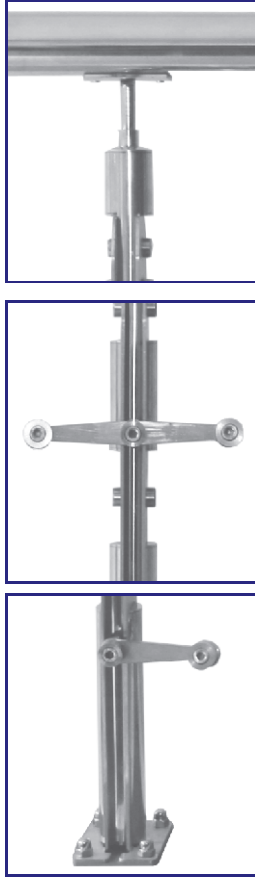
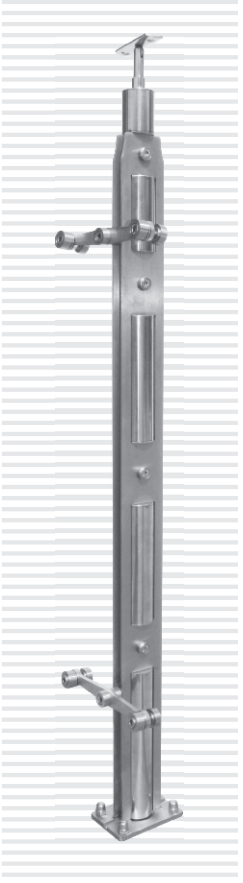


Malzeme = AISI 304

Saten - Parlak



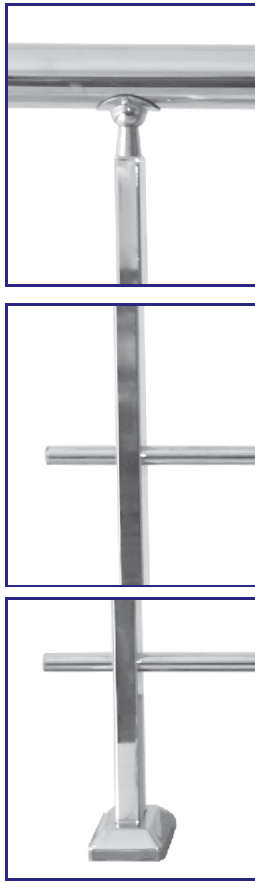
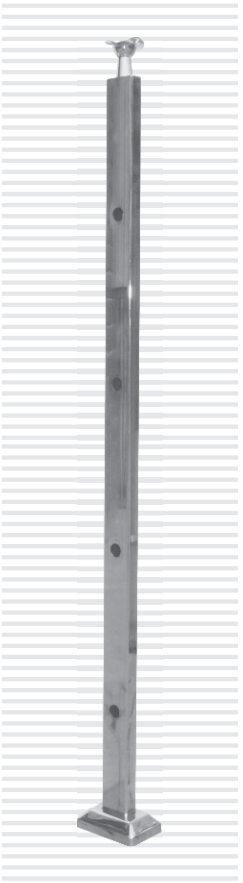
ÖZEL DEKORATİF DİKME - 03



Saten - Parlak

Malzeme = AISI 304

ÖZEL DEKORATİF DİKME - 04



Saten - Parlak

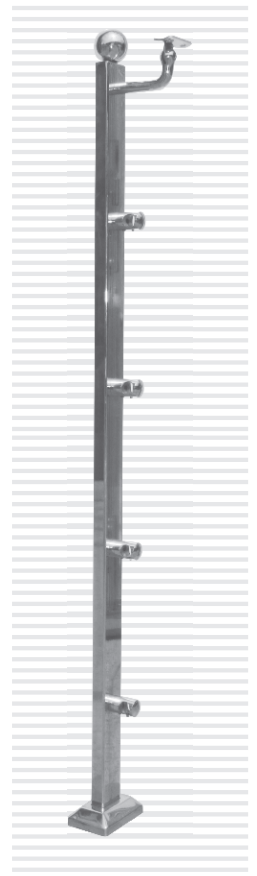
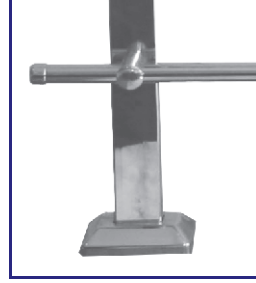
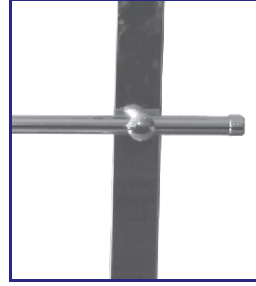
Malzeme = AISI 304

ÖZEL DEKORATİF DİKME - 05



Malzeme = AISI 304

Saten - Parlak

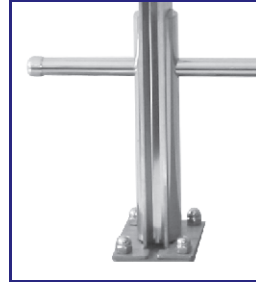
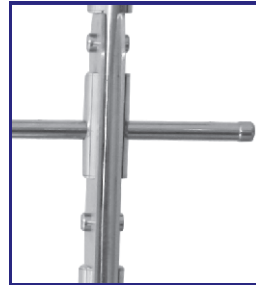


ÖZEL DEKORATİF DİKME - 06

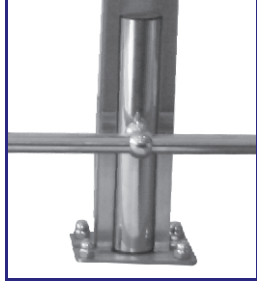
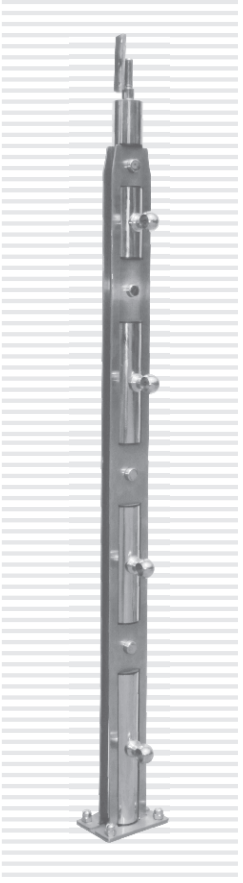


Malzeme = AISI 304

Saten - Parlak



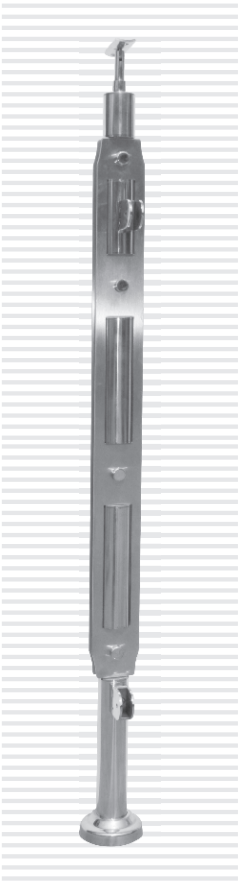
ÖZEL DEKORATİF DİKME - 07



Saten - Parlak

Malzeme = AISI 304

ÖZEL DEKORATİF DİKME - 08



Saten - Parlak

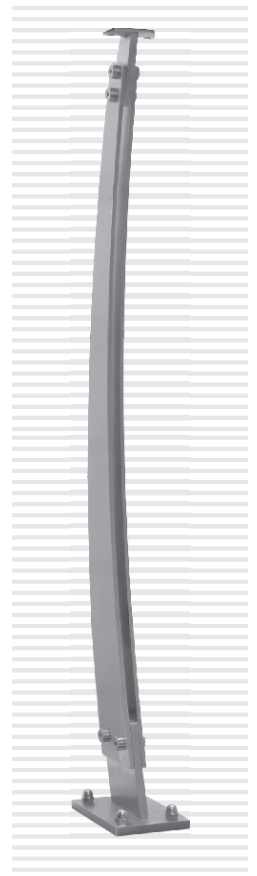
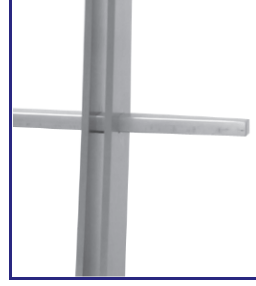
Malzeme = AISI 304

ÖZEL DEKORATİF DİKME - 09



Malzeme = AISI 304

Saten - Parlak

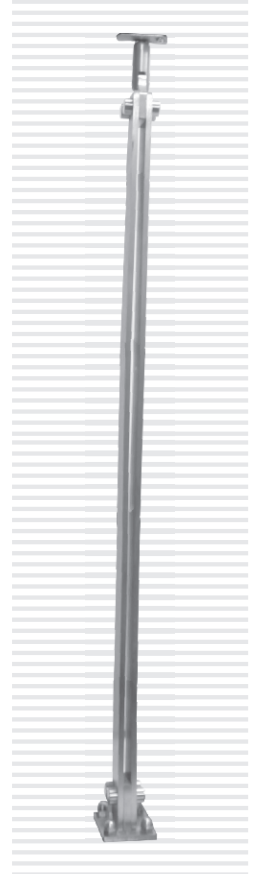
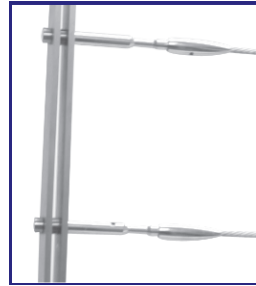


ÖZEL DEKORATİF DİKME - 10

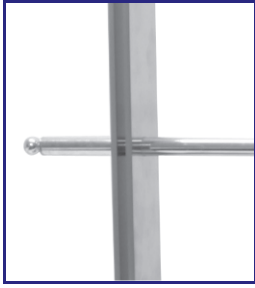
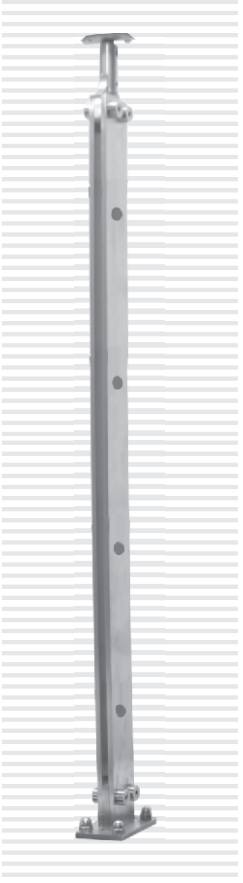


Malzeme = AISI 304

Saten - Parlak



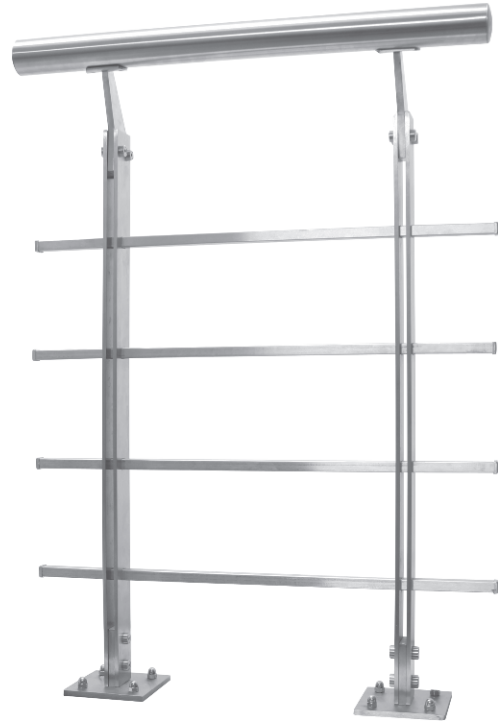
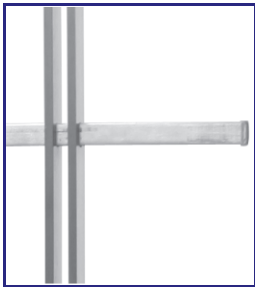
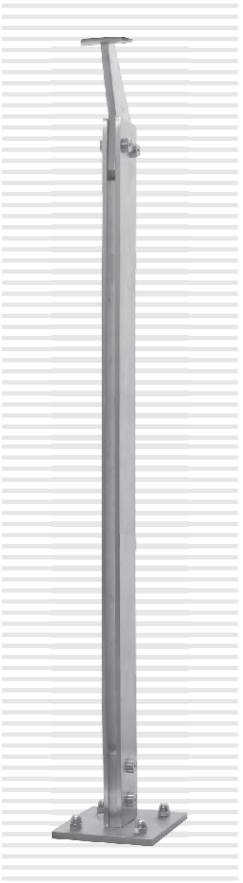
ÖZEL DEKORATİF DİKME - 11



Saten - Parlak

Malzeme = AISI 304

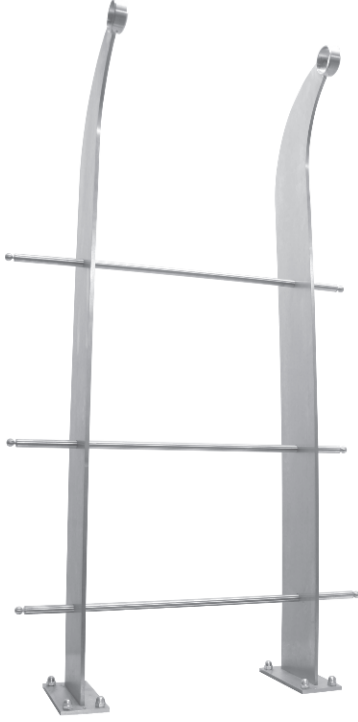
ÖZEL DEKORATİF DİKME - 12



Saten - Parlak

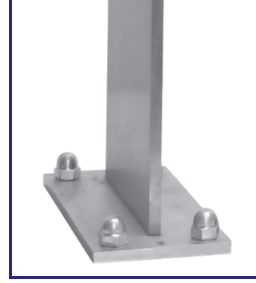
Malzeme = AISI 304

ÖZEL DEKORATİF DİKME - 13



Malzeme = AISI 304

Saten - Parlak

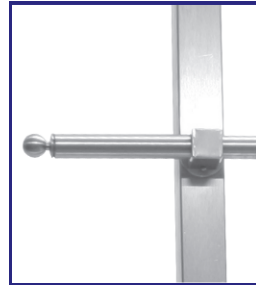


ÖZEL DEKORATİF DİKME - 14

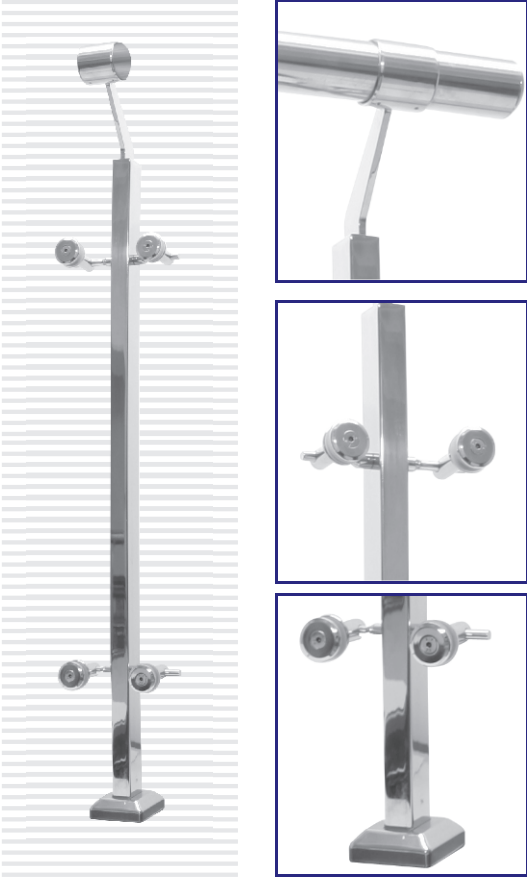


Malzeme = AISI 304

Saten - Parlak



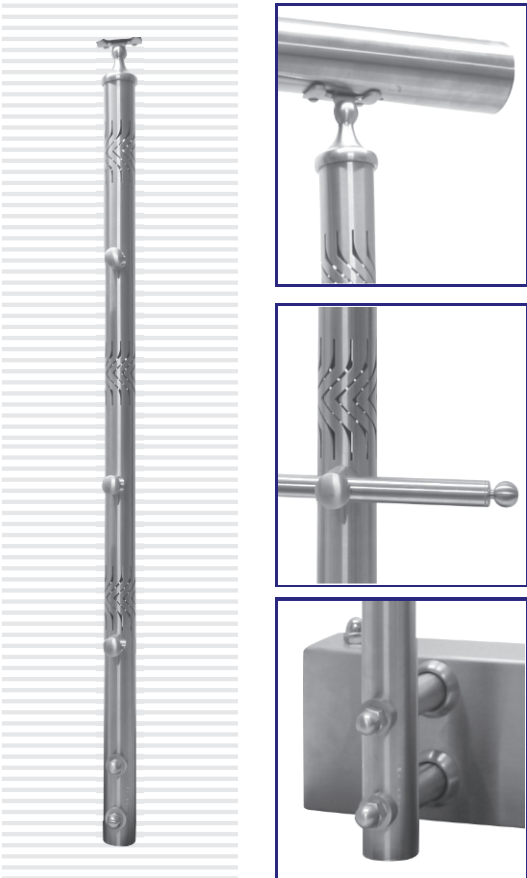
ÖZEL DEKORATİF DİKME - 15



Saten - Parlak

Malzeme = AISI 304

ÖZEL DEKORATİF DİKME - 16



Saten - Parlak

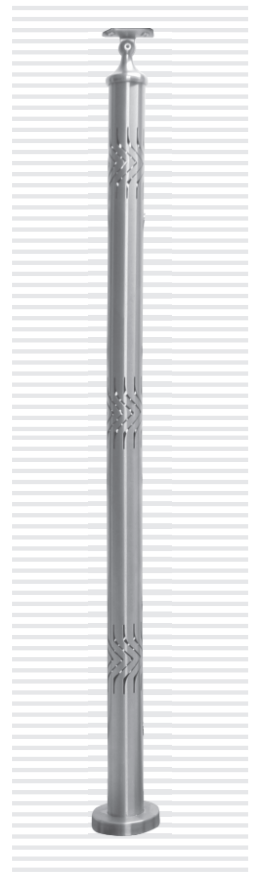
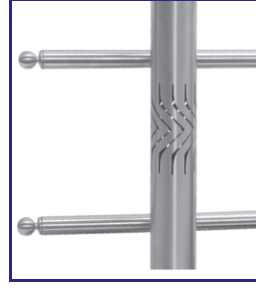
Malzeme = AISI 304

ÖZEL DEKORATİF DİKME - 17



Malzeme = AISI 304

Saten - Parlak

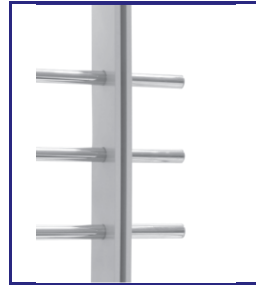


ÖZEL DEKORATİF DİKME - 18



Malzeme = AISI 304

Saten - Parlak

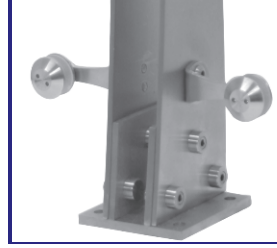


ÖZEL DEKORATİF DİKME - 19

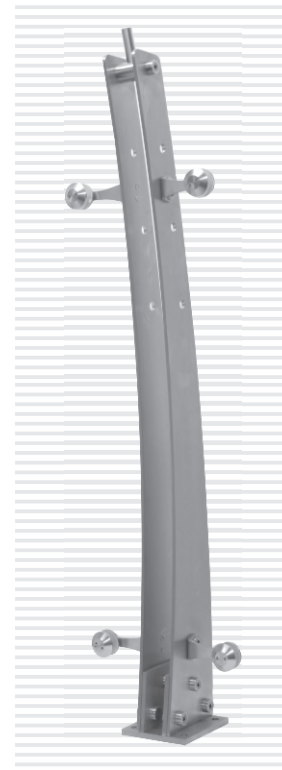
Malzeme = AISI 304



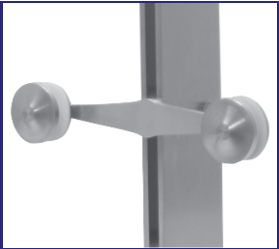
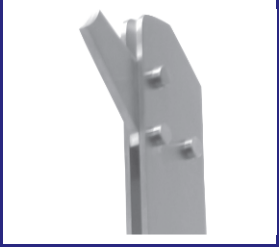
Saten - Parlak

ÖZEL DEKORATİF DİKME - 20

Malzeme = AISI 304



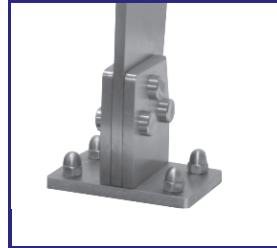
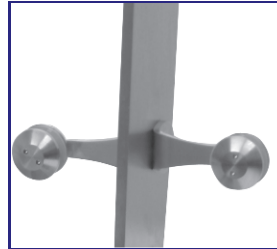
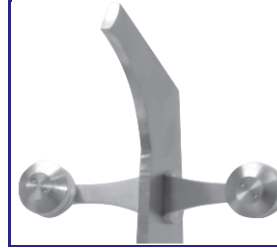
Saten - Parlak

ÖZEL DEKORATİF DİKME - 21

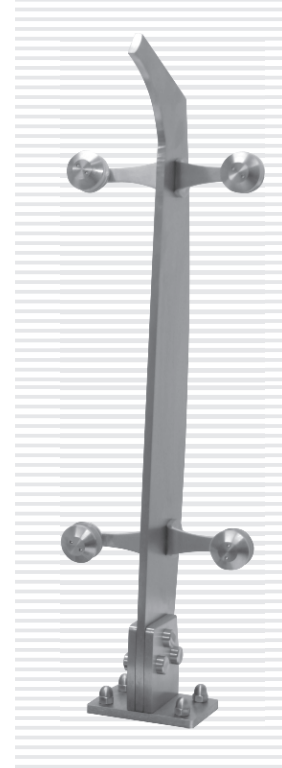
Malzeme = AISI 304



Saten - Parlak

ÖZEL DEKORATİF DİKME - 22

Malzeme = AISI 304

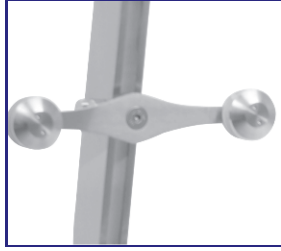
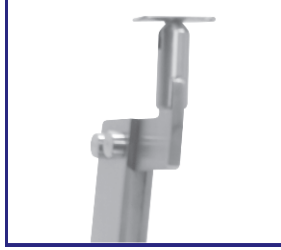


Saten - Parlak

ÖZEL DEKORATİF DİKME - 23



Saten - Parlak

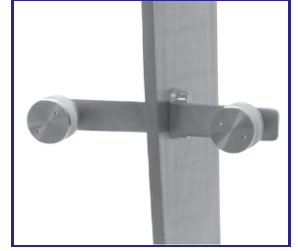


Malzeme = AISI 304

ÖZEL DEKORATİF DİKME - 24

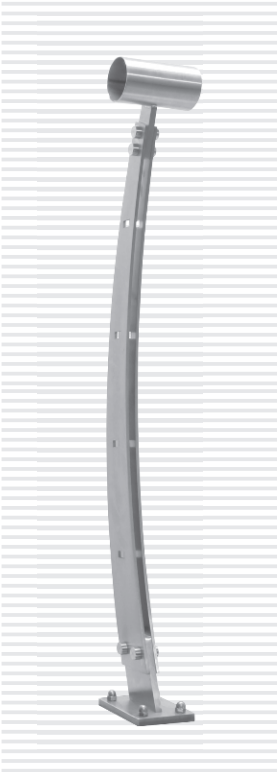


Saten - Parlak

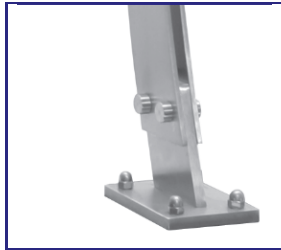


Malzeme = AISI 304

ÖZEL DEKORATİF DİKME - 25



Saten - Parlak

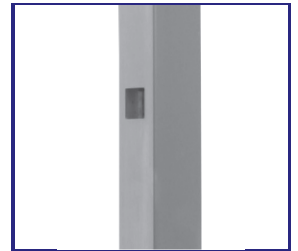


Malzeme = AISI 304

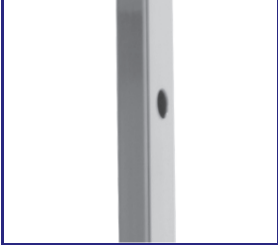
ÖZEL DEKORATİF DİKME - 26



Saten - Parlak



Malzeme = AISI 304

ÖZEL DEKORATİF DİKME - 27

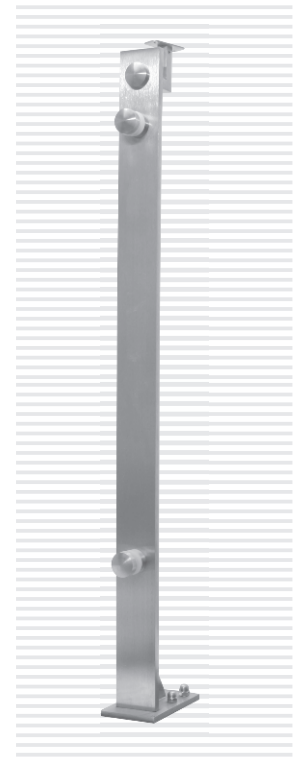
Malzeme = AISI 304



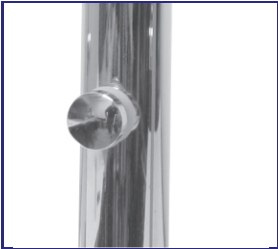
Saten - Parlak

ÖZEL DEKORATİF DİKME - 28

Malzeme = AISI 304



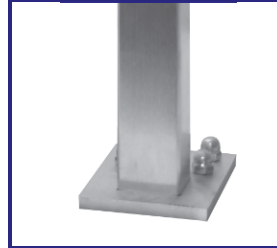
Saten - Parlak

ÖZEL DEKORATİF DİKME - 29

Malzeme = AISI 304



Saten - Parlak

ÖZEL DEKORATİF DİKME - 30

Malzeme = AISI 304



Saten - Parlak

BAYRAK DİREĞİ



Saten - Parlak

SONSUZ DÖNER



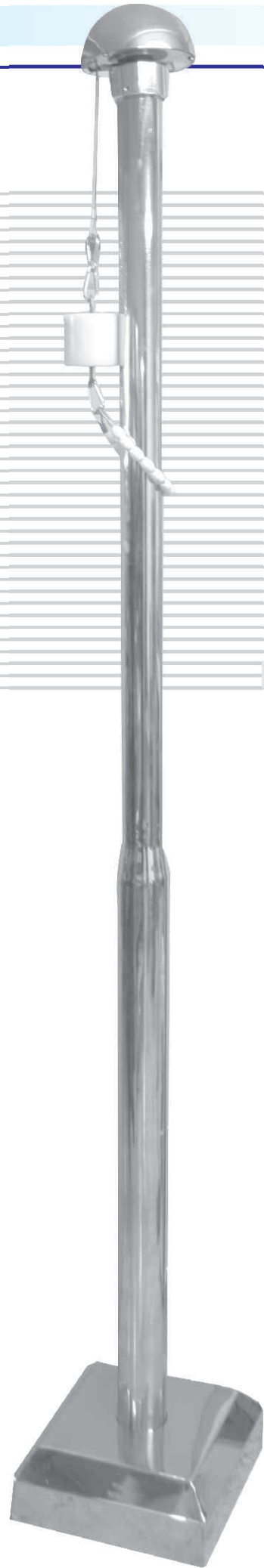
Saten - Parlak

KOÇ BOYNUZU

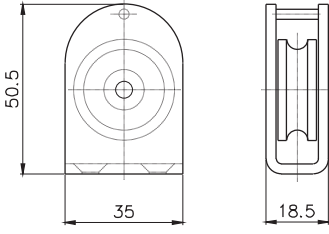


Saten - Parlak

Malzeme = AISI 304-316



BAYRAK DİREK MAKARASI

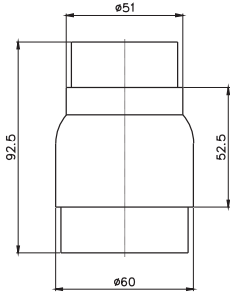


Malzeme = AISI 304



Saten - Parlak

REDİKSİYON - 60x51

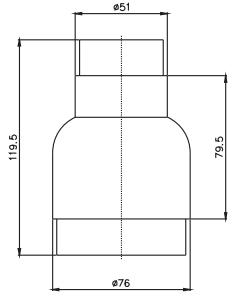


Malzeme = AISI 304



Saten - Parlak

REDİKSİYON - 76x51

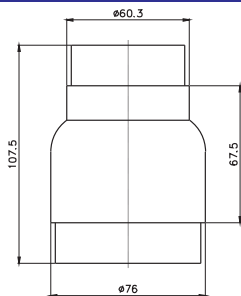


Malzeme = AISI 304



Saten - Parlak

REDİKSİYON - 76x60

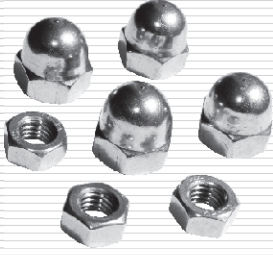


Malzeme = AISI 304

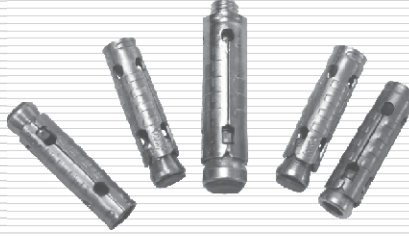


Saten - Parlak

CİVATA GRUBU



ÇELİK DÜBEL



BORU ÇAPLARI

- Ø 15,8
- Ø 21,3
- Ø 25,4
- Ø 32
- Ø 38
- Ø 42,4
- Ø 50,8
- Ø 60,3



YÜZÜK BAĞLANTI VİDALARI



Inox

POP PERÇİNLER



Aluminyum / Inox

KÜPEŞTE BAĞLANTI VİDALARI

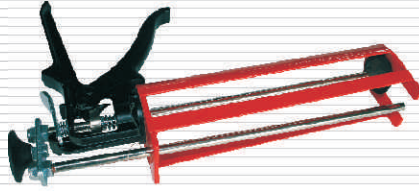


Inox / Galvanizli

PERÇİN TABANCASI



EPOXY TABANCASI



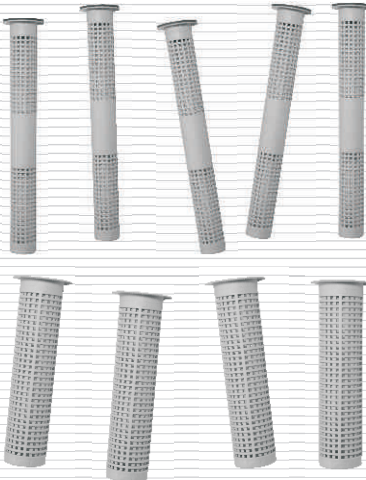
TOZ POMPASI



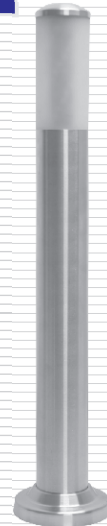
ZEMİN BAĞLANTI EPOXY

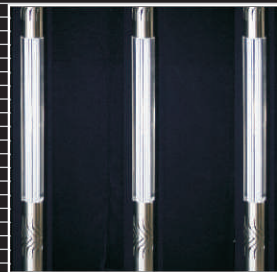
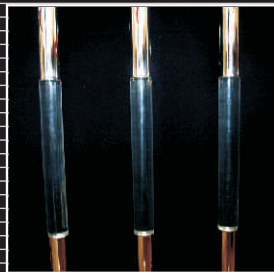
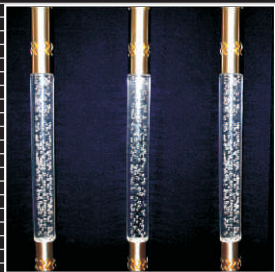
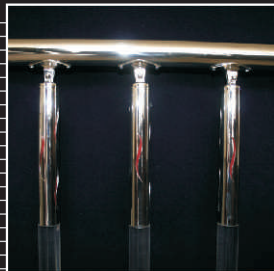
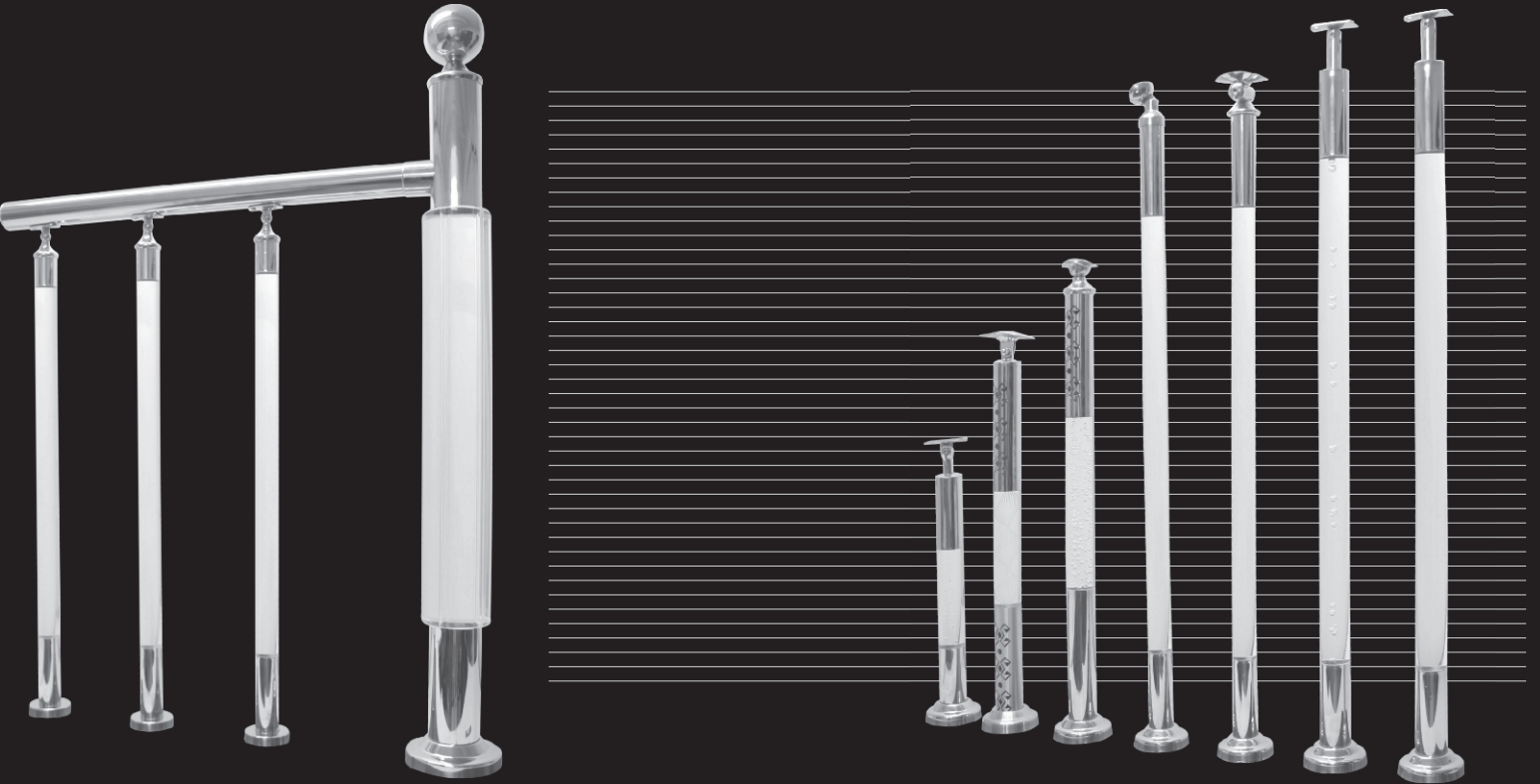


FİLE



LAMBA





A

A TİPİ SPİDER 1'Lİ UZUN - SPTA-U1 50
 A TİPİ SPİDER 2'Lİ V - SPTA-V 50
 A TİPİ SPİDER 3'LÜ - SPTA-3 51
 A TİPİ SPİDER 4'LÜ - SPTA-4 51
 AÇILI ROZET – ADPR 7
 AÇILI ROZET – APR 7
 AÇILI BABA BAĞLANTISI – ABB 01 44
 AÇILI CAM TUTUCU (8MM CAMA) – ACK 100 48
 AÇILI CAM TUTUCU (8MM CAMA) – DACK 500 48
 AÇILI CAM TUTUCU (8MM CAMA) – DACK 800 48
 ANKRAJLI DUVAR KOLÇAĞI – HR 300 36
 ANKRAJLI DUVAR KOLÇAĞI – HRA 300 36
 ANKRAJLI DUVAR KOLÇAĞI – HRA 600 37
 AYARLI DİKME KOLÇAĞI – HR 101 35

B

B TİPİ SPİDER 1'Lİ - SPTB-1 51
 B TİPİ SPİDER 1'Lİ UZUN - SPTB-U1 52
 B TİPİ SPİDER 2'Lİ - SPTB-2 51
 B TİPİ SPİDER 2'Lİ V - SPTB-V 52
 B TİPİ SPİDER 3'LÜ - SPTB-3 52
 B TİPİ SPİDER 4'LÜ - SPTB-4 52
 BADEM YÜZÜK BY 200 26
 BAĞLANTI YÜZÜK – BY 100 26
 BANYO GİDER KAPAĞI 70
 BAR TEKMELİĞİ – BT 40
 BAYRAK DİREĞİ 84
 BAYRAK DİREK MAKARASI 85
 BİLEZİK – B 27
 BİTİŞ BAĞLANTISI – BB 30
 BORU ÇEŞİTLERİ 86

C

CAM CAMA KÖŞE BAĞLANTI APARATI – 001 59
 CAM CAMA KÖŞE BAĞLANTI APARATI – 003 59
 CAM CAMA PARADUŞ MENTEŞE - 01 69
 CAM DUVAR BAĞLANTI APARATI – 001 60
 CAM DUVAR BAĞLANTI APARATI – 002 60
 CAM DUVAR BAĞLANTI APARATI – 003 60
 CAM DUVAR KÖŞE BAĞLANTI APARATI – 001 59
 CAM DUVAR KÖŞE BAĞLANTI APARATI – 003 59
 CAM DUVAR PARADUŞ MENTEŞE - 01 69
 CAM KAPI BAĞLAMA APARATI 69
 CAM KAPI KİLİT MEKANİZMASI 68
 CAM KAPI KOLU 66
 CAM KAPI MENTEŞESİ – 01 69
 CAM TUTUCU (8-10MM CAMA) – CK 100 46
 CAM TUTUCU (8-10MM CAMA) – CK 200 46
 CAM TUTUCU (8-10MM CAMA) – CK 300 46
 CAM TUTUCU 49X49 (8-10MM CAMA) – DCK 400 47
 CAM TUTUCU 50X40 (8MM CAMA) – DCK 700 47
 CAM TUTUCU ROTİL ÇİFT TARAFALI – SPR C 56
 CAM TUTUCU AYARLI SAPLAMALI ANKRAJ 56
 CAM TUTUCU SAPLAMALI ANKRAJ 56
 CAM TUTUCU (DİKME ÇİN) – CTS 010 57
 CAM TUTUCU (DİKME ÇİN) – CTS 015 57
 CAM TUTUCU BİRLİ – CTS 020(BİRLİ) 57
 CAM TUTUCU İKİLİ – CTS 020(İKİLİ) 57
 CAM TUTUCU KOLÇAK – CTK 010 58
 CAM TUTUCU KOLÇAK – CTK 015 58
 CAM TUTUCU KOLÇAK – CTK 020 58
 CAM TUTUCU KOLÇAK – CTK 025 58
 CIVATA GRUBU 86
 CUBICLE BAĞLANTI SİSTEMLERİ – 1 65
 CUBICLE BAĞLANTI SİSTEMLERİ – 2 65
 CUBICLE BAĞLANTI SİSTEMLERİ – 3 65
 ÇELİK DÜBEL 86
 ÇOCUK KİLİTİ 68

D

DEKORATİF BİLEZİK 28
 DEKORATİF DİKME BLEZİĞİ 51 28
 DEKORATİF YÜZÜK – BY 500 27
 DESENİLİ DİKME BABASI – DDB 43
 DESENİLİ DİKME BABASI – DDBG 43
 DESENİLİ DİKME BABASI KARE – KDDB 43
 DİKME MAFSAL – DM 100 13
 DİKME MAFSAL – DMTK 100 13
 DİKME MAFSAL – DM 200 13
 DİKME MAFSAL – DMA 200 13
 DİKME MAFSAL – DM 300 14
 DİKME MAFSAL – DMTK 300 14
 DİKME MAFSAL – DM 400 14
 DİKME MAFSAL – DMA 400 14
 DİKME MAFSAL – DM 500 15
 DİKME MAFSAL – DM 600 15
 DİKME MAFSAL – DM 700 15
 DİKME MAFSAL – DM 800 15
 DİKME MAFSAL – DM 900 16
 DİKME MAFSAL – DM 1000 16
 DİKME MAFSAL – DM 1100 16
 DİKME MAFSAL – DM 1200 16
 DİKME MAFSAL – DMA 1200 17
 DİKME MAFSAL – DMA 1300 17
 DİKME MAFSAL – DM 1400 17
 DİKME MAFSAL – DM 1500 17
 DİKME MAFSAL KARE – DMK 01 18
 DİKME MAFSAL KARE – DMK 02 18

DİKME MAFSAL KARE – DMKA 01 18
 DİKME MAFSAL KARE – DMKA 02 18
 DİKME MAFSAL – DM LMA 19
 DİKME MAFSAL – DM LM 19
 DİKME TEPEŞİ Q 38 19
 DİKME TABAN PULU – DTP 30
 DİKME KOLÇAĞI – HRA 100 35
 DİKME KOLÇAĞI – HR 100 35
 DİKME KOLÇAĞI – HRA 500 37
 DUVAR KOLÇAĞI – HR 900 38
 DUVAR KOLÇAĞI – HR1200 39
 DUVAR KOLÇAĞI – HR 1300 39
 DİKME BABASI – DB 42
 DİKME BABASI – DB 100 42
 DİKME BABASI – DB 200 42
 DOLU TIRNAKLI KAPAK – DTK 10
 DOLU TIRNAKLI KAPAK BOMBELİ – DTKB 10
 DUVAR ROZET – DR 8
 DÜZ DUVAR ROZET – DDR 8
 DÜZ BABA BAĞLANTISI – DBB 01 44
 DÜZ CAM TUTUCU (8-10MM CAMA) – DCK 300 47
 DÜZ KURTAĞIZLI BADEM YÜZÜK – BY 301 26
 DÜZ MANŞON 28

E

ENGELLİ BANYO OTURAĞI PASLANMAZ 64
 ENGELLİ BANYO OTURAĞI DUVAR TİPİ 64
 ENGELLİ TUVALET TUTAMAĞI AÇILI 64
 ENGELLİ TUVALET TUTAMAĞI DÜZ 64
 ENGELLİ TUVALET TUTAMAĞI HAREKETLİ KISA 63
 ENGELLİ TUVALET TUTAMAĞI HAREKETLİ UZUN 63
 ENGELLİ TUVALET TUTAMAĞI SABİT – L1 63
 ENGELLİ TUVALET TUTAMAĞI SABİT – L2 63
 EPOXY TABANCASI 86

F

FATURALI MANŞON 28
 FILE 86
 FLANŞ – F 30
 FLANŞ – F1 31
 FLANŞ – F0 31
 FLANŞLI DUVAR KOLÇAĞI – HRA 200 35
 FLANŞLI DUVAR KOLÇAĞI – HRA 201 36
 FLANŞLI DUVAR KOLÇAĞI – HR 200 36
 FLANŞLI DUVAR KOLÇAĞI – HRA 700 38
 FLANŞLI DUVAR KOLÇAĞI – HRA 800 38

G

GEÇME KAPAK – GK 9
 GEÇMELİ PATEN DİRSEK – GPD 90 21
 GEÇMELİ PATEN DİRSEK – GPD 45 21
 GEÇMELİ PATEN DİRSEK – GPD 23

H

HALAT GERDİRME APARATI – HG 01 62
 HALAT GERDİRME APARATI – HG 02 62
 HALAT GERDİRME APARATI – HG 03 62
 HAREKETLİ DİRSEK – HD 51 22
 HAREKETLİ DİRSEK KÖŞE – HDK 51 22

I - İ

ISICAM ROTİLİ 53
 ISICAM ROTİL APARATI 53
 İÇE GEÇME KAPAK DOLU – GKD 10

K

KAPI GİRİŞ ÜSTÜ (CAM) HALAT GERDİRME SİSTEMİ 62
 KAPI STOPERİ – KS 01 66
 KAPI STOPERİ – KS 02 66
 KAPI TOKMAĞI 66
 KARE BADEM YÜZÜK – BY 302 27
 KARE DİKME BABASI – KDB 42
 KARE GEÇME KAPAK – GK 9
 KAYNAKLI KAPAK – KKC 9
 KAYNAKLI KÖŞE MAFSAL 23
 KAYNAKLI KÜRE KAPAK – KK 9
 KAYAR KAPI MEKANİZMASI TAKIM 65
 KOÇ BOYNUZU 84
 KOLÇAK – HR 500 37
 KOLÇAK – HR 800 38
 KOLÇAK – HRA 1000 39
 KOLÇAK – HRA 1100 39
 KÖŞE MAFSAL – KM 22
 KÖŞE MAFSAL – KM 16 22
 KÖŞE MAFSAL – KMD 23
 KURTAĞIZLI BADEM YÜZÜK BY 300 26
 KURT AĞIZLI BORU YAN ANKRAJ – YA200 32
 KÜPEŞTE BAĞLANTI VIDALARI 86
 KÜRE GEÇME KAPAK DOLU – KGGD 10
 KÜRE YÜZÜK – BY 400 27

L

LAMBA 86

M

MİL MENTEŞE 67

O

OVAL CAM TUTUCU (8-10 MM CAMA) – DCK 200 46
 OVAL CAM TUTUCU (8 MM CAMA) – DCK 600 47

Ö

ÖZEL DEKORATİF DİKME – 01-30 72-83
 ÖZEL MENTEŞE 50X50 67
 ÖZEL MENTEŞE 53X89 67
 ÖZEL MENTEŞE 120X92 67
 ÖZEL YAYLI MENTEŞE 67

P

PARADUŞ KULBU 70
 PARADUŞ MENTEŞESİ 60
 PATEN DİRSEK – PD 90 21
 PATEN DİRSEK – PD 45 21
 PERÇİN TABANCASI 86
 PLASTİK TAKOZ – PT 24
 PLASTİK TAKOZ – PTK 24
 PLEKSİ DİKME BABASI – PDB 43
 POP PERÇİNLER 86

R

REDİKSİYON 60X51 85
 REDİKSİYON 76X51 85
 REDİKSİYON 76X60 85
 ROZET – PR 4,5
 ROZET – BPR 4,5
 ROZET – DPR 4,6
 ROZET – YPR 4
 ROZET – DKPR 5
 ROZET – DDKPR 6
 ROZET – KPR (61X61) 6
 ROZET – KPR (84X84) 6
 ROZET – KDPR (60X60) 7
 ROZET – KDPR (81X81) 7
 ROZET – HPR 8

S

SABİT DUVAR KOLÇAĞI – HR 400 37
 SAPLAMALI BAR TEKMELİĞİ – BTS 40
 SAPLAMALI PLASTİK ANKRAJ – SPA 31
 SAPLAMALI PLASTİK ANKRAJ (KARE) – SPAK 31
 SAPLAMASIZ PLASTİK ANKRAJ – PA 31
 SONSUZ DÖNER 84
 SPİDER 1'Lİ – SPT 1 49
 SPİDER 2'Lİ – SPT 2 49
 SPİDER 3'LÜ – SPT 3 49
 SPİDER 4'LÜ – SPT 4 49
 SPİDER 1'Lİ UZUN – SPT U1 50
 SPİDER 2'Lİ V – SPT V 50
 SPİDER KONEKTÖRÜ 32X50 (30MM AYARLI) 53
 SPİDER KONEKTÖRÜ 32X20 (10MM AYARLI) 53
 SPİDER ROTİL Q50 – SPR 50 54
 SPİDER ROTİL Q60 – SPR 60 54
 SPİDER ROTİL ÖNDEN SIKMALI – SPRO 50 54
 SPİDER ROTİL ÖNDEN SIKMALI – SPRO 50B 54
 SPİDER ROTİL ÖNDEN SIKMALI – SPRO 60 55
 SPİDER ROTİL KONİK GÖVDELİ – SPR K 56
 SPİDER ROTİL YAPIŞTIRMALI Q50 – SPRY 50 55
 SPİDER ROTİL YAPIŞTIRMALI Q60 – SPRY 60 55
 SPİDER ROTİL YAPIŞTIRMALI Q100 – SPRY 100 55

T

TIRNAKLI İÇE GEÇME KAPAK BOMBELİ – TKB 11
 TIRNAKLI İÇE GEÇME KAPAK – TK 11
 TOZ POMPASI 86
 TUTAMAK DÜZ – TD 40
 TUTAMAK AÇILI – TA 40

W

WC KAPI KİLİTİ – 01 68
 WC KAPI KİLİTİ – 02 68

Y

YAN ANKRAJ BAĞLANTI ELEMANI KARE – YAK100 32
 YAN ANKRAJ BAĞLANTI ELEMANI – YA100 32
 YAN ANKRAJ BAĞLANTI ELEMANI – YA300 32
 YAN ANKRAJ BAĞLANTI ELEMANI – YA 400 33
 YAN ANKRAJ BAĞLANTI ELEMANI – YA 500 33
 YAN ANKRAJ BAĞLANTI ELEMANI – YA 600 33
 YAN ANKRAJ BAĞLANTI ELEMANI – YA 700 33
 YÜZÜK BAĞLANTI VIDALARI 86

Z

ZEMİN BAĞLANTI ANKRAJLI – ZBA 100 30
 ZEMİN BAĞLANTI EPOXY 86